



## London Road, TW7

### £400,000

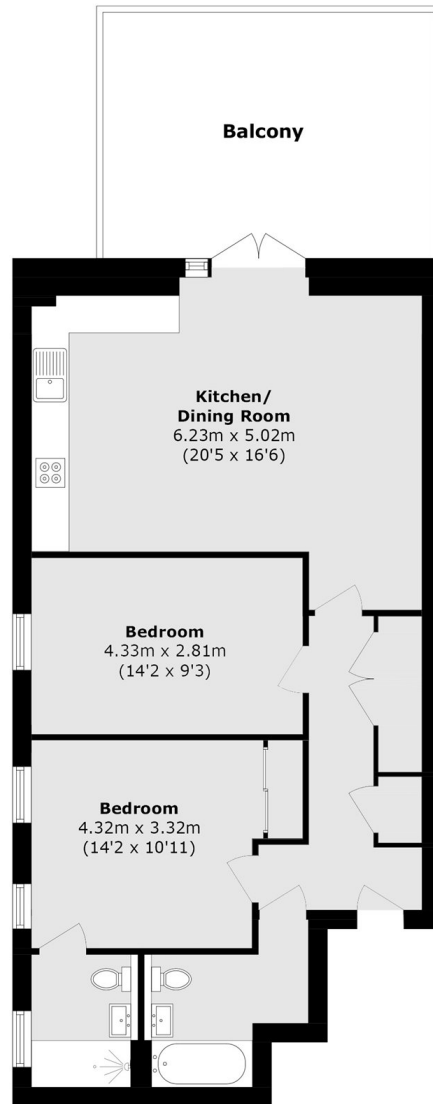
We are delighted to bring to the market this stunning two double bedroom, two bathroom apartment located in a sought after and popular development in the heart of Isleworth. Offering more than 800 square feet of generous living space, this fourth floor corner plot apartment is positioned as a penthouse in this section of the building. We love the large private roof terrace which offers ample space for entertaining. Further benefits include a long lease and secure allocated parking.

The apartment is situated close to local amenities, transport links and local schools and parks. Isleworth and Osterley stations both offer convenient train and tube links in and out of London.

### Features

- Two Double Bedrooms
- Two Bathrooms
- Large Roof Terrace
- Private Balcony
- Allocated Parking
- Lift Service

# London Road, Isleworth, TW7



Total area (approx.): 74.5 sq. m (801.9 sq. ft)

Balcony area (approx.): 20.7 sq. m (222.8 sq. ft)