



Because property is personal with...

**Carleton Rise, Welwyn**

**BELVOIR!**



£2,600 PCM



## Key Features

- 4 Bedroom Detached House
- Welwyn Village
- Driveway
- Double garage
- Gas central heating
- Council tax band F
- EPC rating D





Belvoir Welwyn are delighted to offer this charming four-bedroom detached house, ideally located in the highly sought-after Welwyn Village.

This well-presented property boasts a modern kitchen/diner, a spacious lounge with doors leading out to the rear garden and a downstairs bathroom.

Upstairs, you'll find three generously sized double bedrooms, along with a smaller single bedroom that comes with built-in storage. The family bathroom completes the upper floor.



The property further benefits from gas central heating, a driveway and double garage.









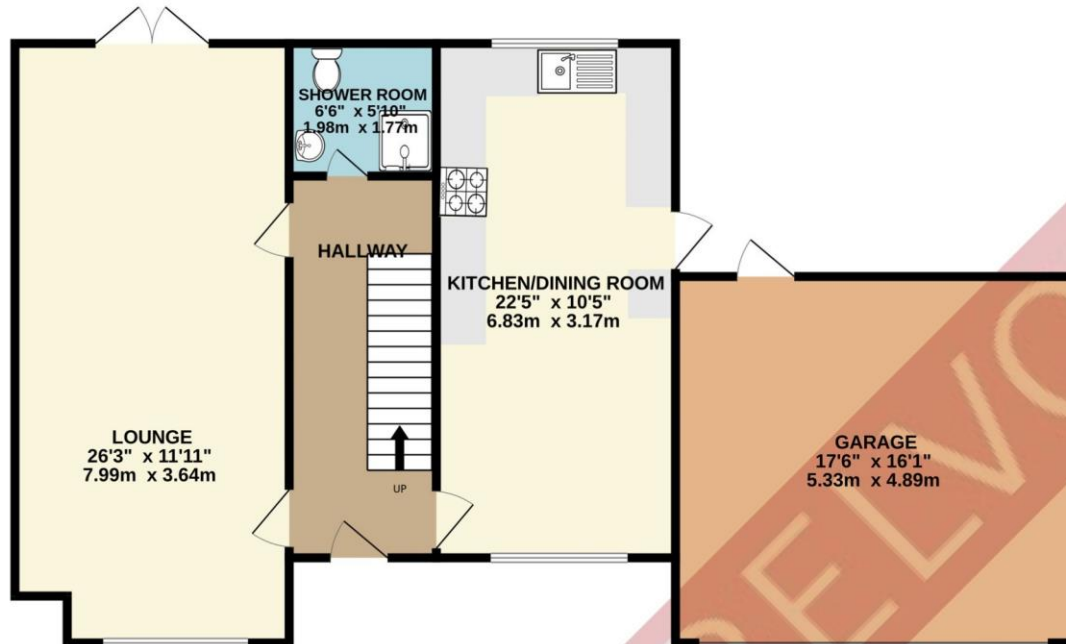




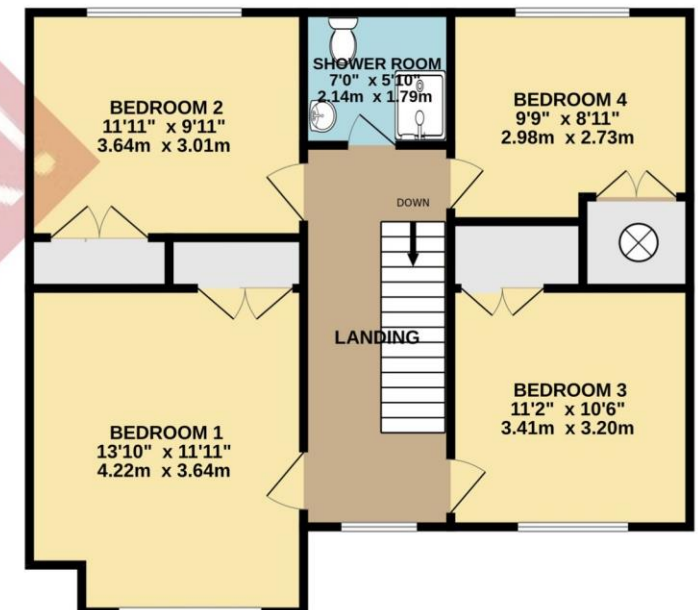




# GROUND FLOOR

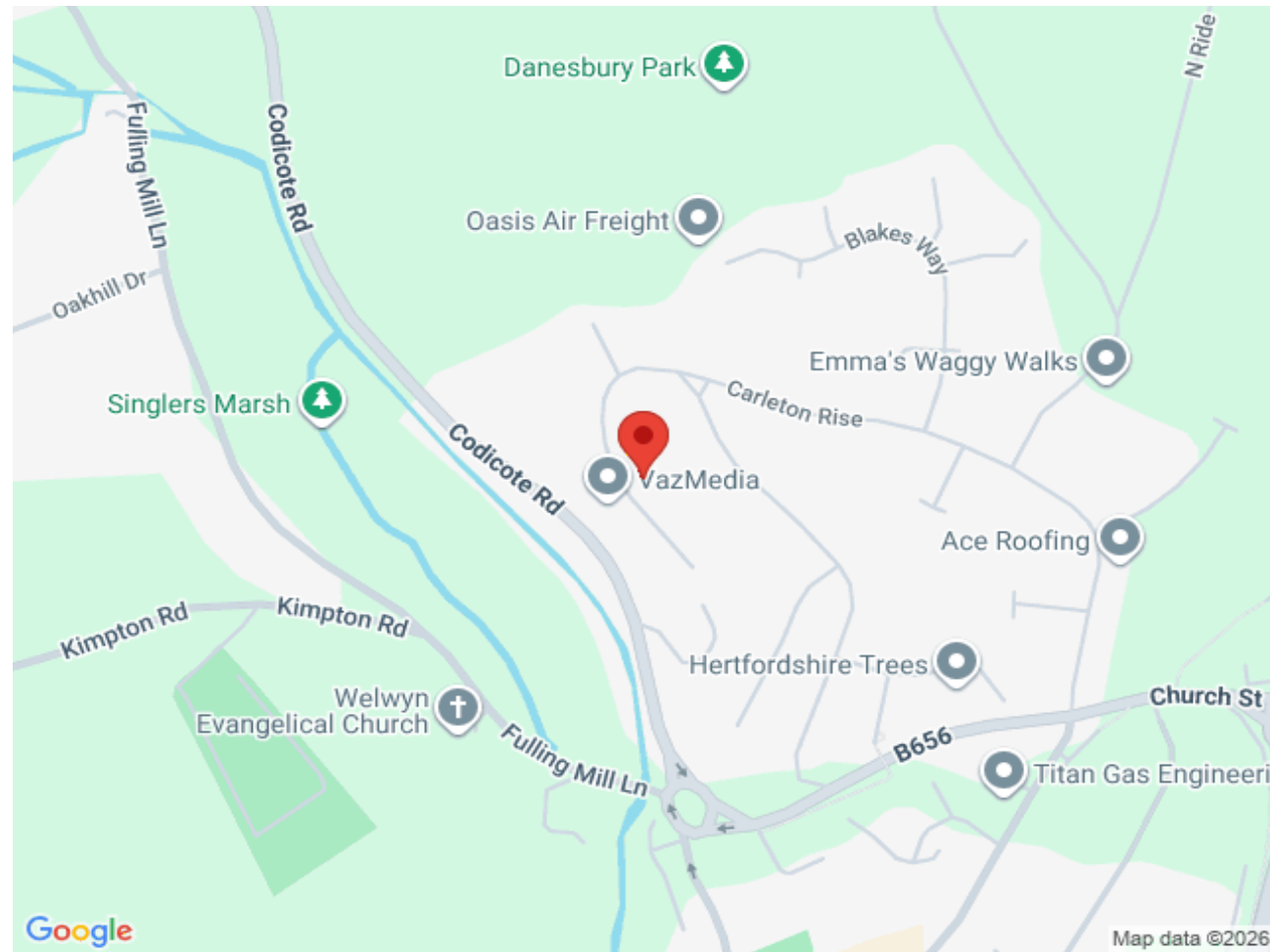


# 1ST FLOOR



Whilst every attempt has been made to ensure the accuracy of the floorplan contained here, measurements of doors, windows, rooms and any other items are approximate and no responsibility is taken for any error, omission or mis-statement. This plan is for illustrative purposes only and should be used as such by any prospective purchaser. The services, systems and appliances shown have not been tested and no guarantee as to their operability or efficiency can be given.  
Made with Metropix ©2025





# BELVOIR!