



smarthomes

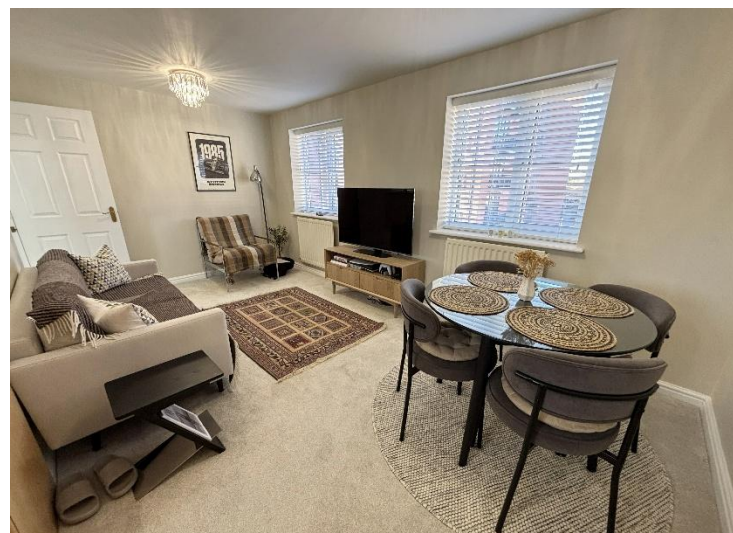
## Rumbush Lane

Dickens Heath, Solihull

- A Very Well Presented First Floor Apartment
- Two Good Size Bedrooms
- Open Plan Lounge/Diner/Kitchen
- Two Allocated Parking Spaces

**£175,000**

Current EPC Rating - C  
Current Council Tax Band - C





## Property Description

A very well presented first floor apartment situated in a most popular location. Benefitting from two allocated parking spaces, an open plan lounge/diner & kitchen, two good size bedrooms and bathroom

Dickens Heath village offers a contemporary life style with a superb range of family homes and apartments, restaurants, offices, shops, medical surgeries as well as a local library, village hall and village green to provide that community lifestyle. Set within easy access to the M42 and train stations the village is ideal for families and commuters.



## Rooms & Measurements

Lounge/Diner Area 5.08m x 2.87m (16'8" x 9'5")

Kitchen Area 2.29m x 2.18m (7'6" x 7'2")

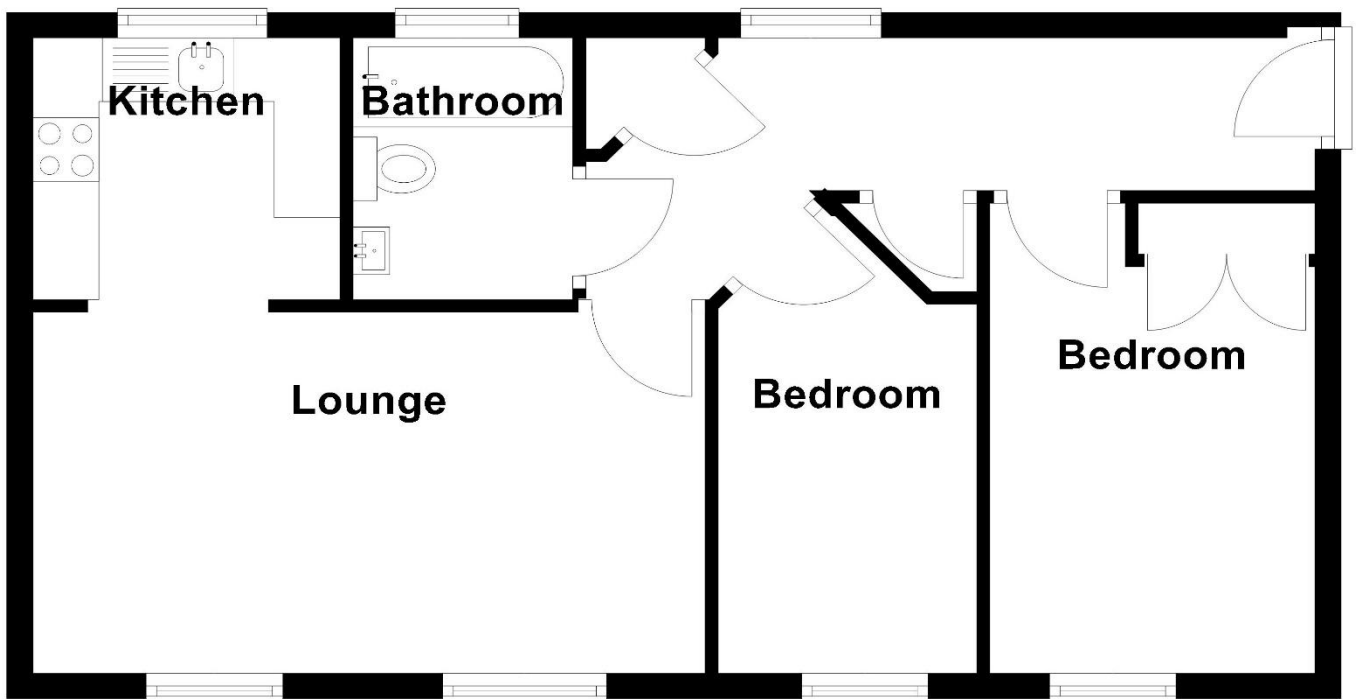
Bedroom One 3.89m x 2.44m (12'9" x 8'0")

Bedroom Two 3.68m max x 1.83m (12'1" max x 6'0")

Bathroom

Tenure

We are advised by the vendor that the property is leasehold with approx. 971 years remaining on the lease, a service charge of approx. £1,696 per annum and no ground rent payable. We would advise all interested parties to obtain verification through their own solicitor or legal representative. EPC supplied by Nigel Hodges. Current council tax band – C



Total area: approx. 48.7 sq. metres (524.0 sq. feet)

316 Stratford Road  
Shirley  
Solihull  
B90 3DN

[www.smart-homes.co.uk](http://www.smart-homes.co.uk)  
0121 744 4144

Agents Note: Whilst every care has been taken to prepare these particulars, they are for guidance purposes only. We believe all information to be correct from the day of marketing however, we advise and recommend that your conveyancer and or surveyor verifies all information supplied. All measurements are approximate are for general guidance purposes only and whilst every care has been taken to ensure their accuracy, they should not be relied upon and potential buyers are advised to recheck the measurements.