



Peter  
Buswell  
Independent Family Estate Agents



## A Character Property With Views In Ticehurst

Offers Over £475,000

3 1 2





## Main Description

Set in the sought-after village of Ticehurst, this charming end-of-terrace is available now and offers character and convenience. Featuring neutral décor and a range of traditional touches, the home provides a welcoming atmosphere throughout.

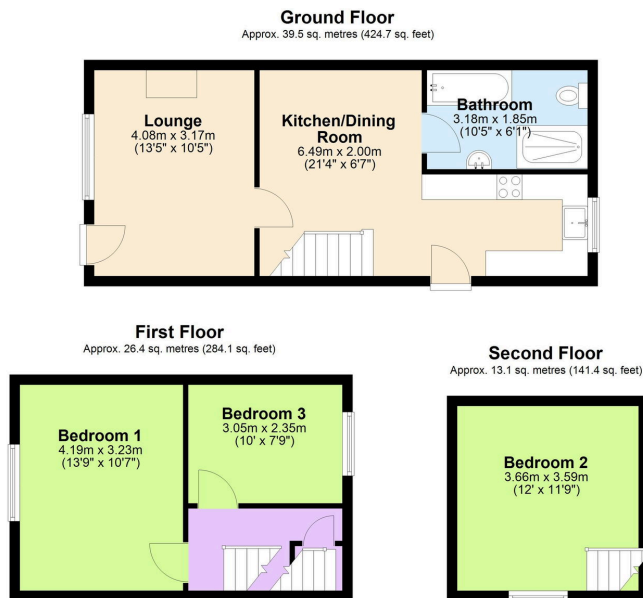
Upon entering, you are greeted by a country-style kitchen complete with cooker, hob and a classic butler sink. This flows through to a well-proportioned dining area, offering ample space for a family dining table. The ground floor also benefits from a generously sized bathroom, fitted with a large shower cubicle and a corner bath. The separate lounge adds to the character with a feature fireplace.

On the first floor, you will find a double bedroom with countryside views to the front and an additional bedroom overlooking the garden. The top floor hosts another double bedroom with built-in storage, providing flexibility for family living, guests or a home office.

Externally, the established rear garden includes a patio, lawn and a garden shed, creating an ideal space for outdoor enjoyment. To the front of the property, a driveway offers ample off-road parking.

Situated within walking distance of Ticehurst High Street, the property enjoys easy access to local amenities, scenic walks and beautiful countryside views. With its attractive features and timeless character, this home presents a wonderful opportunity for those seeking village living in a rural setting.





- THREE BEDROOM END-OF-TERRACE HOUSE
- CHARACTER FEATURES THROUGHOUT
- WALKABLE DISTANCE TO TICEHURST HIGH STREET
- STUNNING COUNTRYSIDE VIEWS
- EPC RATING D
- AVAILABLE WITH NO-ONWARD-CHAIN
- OFF-STREET PARKING
- EASY ACCESS TO THE A21
- GENEROUS GARDEN
- COUNCIL TAX BAND C



Score	Energy rating	Current	Potential
92+	A		
81-91	B		
69-80	C		76 C
55-68	D	66 D	
39-54	E		
21-38	F		
1-20	G		