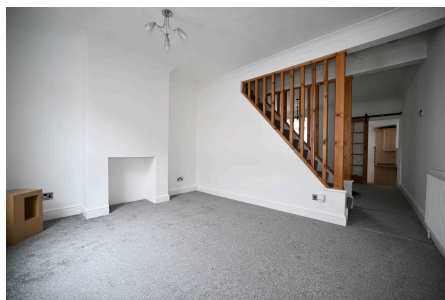


31 Melbourne Road,

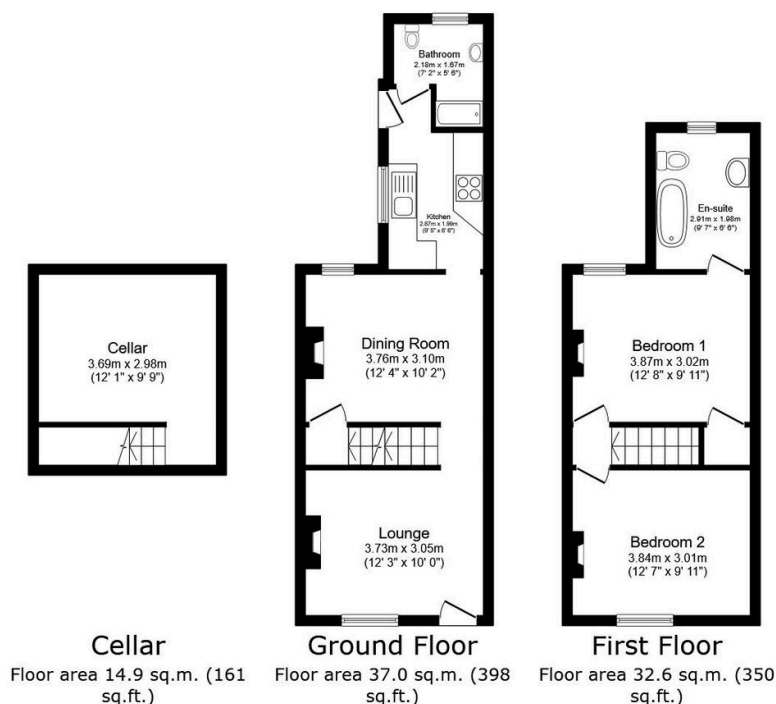
Guide Price £210,000

 2
  2
  2


CALL TO BOOK YOUR VIEWING! Guide Price £210,000 - £230,000. This blank canvass is being offered with no forward chain and could be the ideal opportunity to get onto the property ladder. Located near to Chatham town centre you have an array of shops and amenities right on your doorstep including a train station within walking distance. Offering two double bedrooms, an upstairs bathroom, downstairs shower room and the bonus of a cellar room too. QUOTE AP0490

Key Features

- Two Double Bedroom Terrace Home
- No Chain
- Downstairs Shower Room & Toilet
- Upstairs Bathroom
- Cellar Ideal For Home Office
- Walking Distance To The Town Centre and Train Station
- Easy Access To The M2 Ideal For Commuters
- Recently Redecorated Throughout including New Carpets
- Tenure Freehold / Council Tax Band B
- QUOTE AP0490



Total floor area: 84.4 sq.m. (909 sq.ft.)

This floor plan is for illustrative purposes only. It is not drawn to scale. Any measurements, floor areas (including any total floor area), openings and orientations are approximate. No details are guaranteed, they cannot be relied upon for any purpose and do not form any part of any agreement. No liability is taken for any error, omission or misstatement. A party must rely upon its own inspection(s). Powered by www.Propertybox.io