

Green Lane, Letchworth Garden City, SG6 1EG

Offers Over £600,000

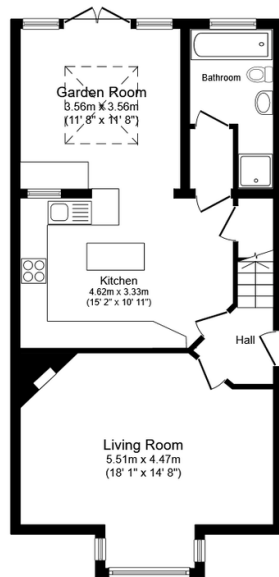
3 1 2



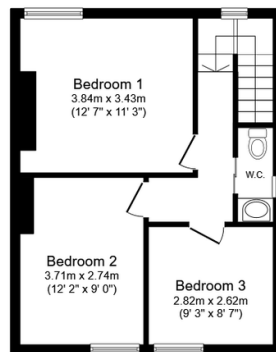
An excellent opportunity to acquire this attractive Edwardian semi detached residence, designed by the renowned architects Messrs Parker and Unwin circa 1904. Known as Elm Dene, this beautifully proportioned home offers three generous double bedrooms and occupies a substantial plot, providing significant potential for extension or enhancement subject to planning permission.

Key Features

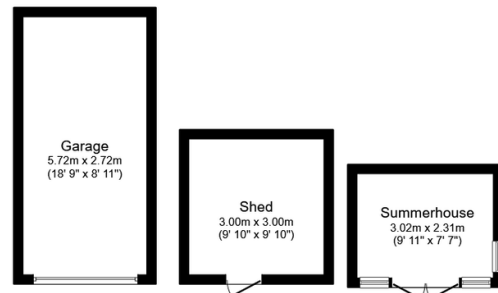
- Chain Free
- Large plot with extension potential subject to planning
- Refitted kitchen diner with appliances
- Ground floor bathroom and first floor WC
- Attractive rear garden with summer house with power and electric
- Must see video tour
- Three double bedrooms
- Garden room with atrium ceiling
- Driveway for up to six cars and detached garage
- Edwardian semi detached home circa 1913



Ground Floor
Floor area 63.6 sq.m. (685 sq.ft.)



First Floor
Floor area 40.6 sq.m. (437 sq.ft.)



Outbuilding
Floor area 31.7 sq.m. (341 sq.ft.)

Total floor area: 135.9 sq.m. (1,463 sq.ft.)

This floor plan is for illustrative purposes only. It is not drawn to scale. Any measurements, floor areas (including any total floor area), openings and orientations are approximate. No details are guaranteed, they cannot be relied upon for any purpose and do not form any part of any agreement. No liability is taken for any error, omission or misstatement. A party must rely upon its own inspection(s). Powered by www.Propertybox.io