



Maple Road, Ashted

Maple Road

Ashted

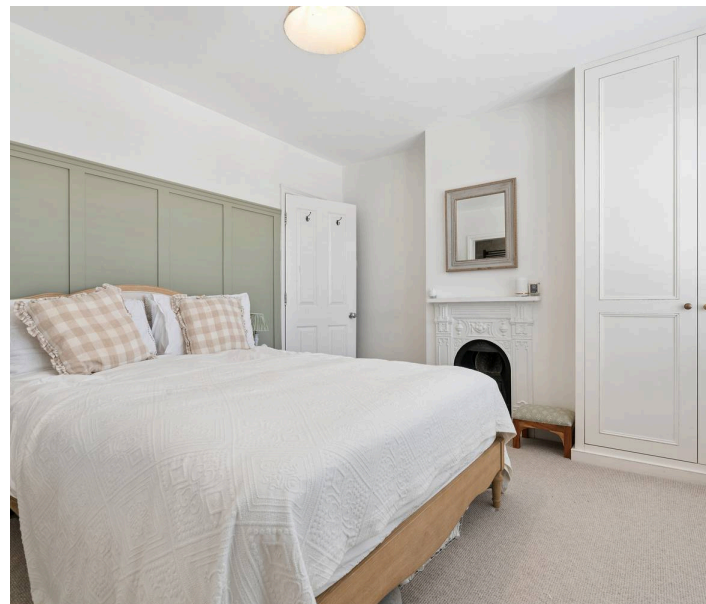
Council Tax band: F

Tenure: Freehold

EPC Energy Efficiency Rating: D

EPC Environmental Impact Rating: E

- Victorian Semi Detached House
- Tastefully Renovated by Current Owners
- Period Features Throughout
- Four Bedrooms
- Two Bathrooms
- Outbuilding with Gym & Office
- Private Road





V&H Homes are delighted to present this beautifully modernised Victorian residence, set within the highly sought-after Lanes area of Ashted.

Having been thoughtfully renovated to an exceptional standard, this impressive home blends period charm with contemporary design. Throughout, the property showcases high-quality finishes including Farrow & Ball tones, parquet flooring, bespoke fitted wardrobes and classic shutter blinds.

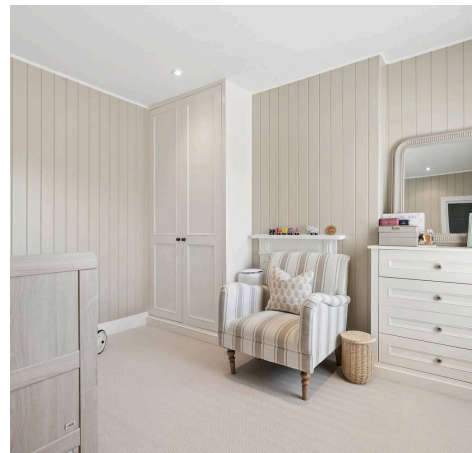
The ground floor offers two generous reception rooms provide versatile space, enhanced by two working fireplaces, including a cosy log burner. To the rear, a well-appointed kitchen offers excellent functionality with direct access to the garden.

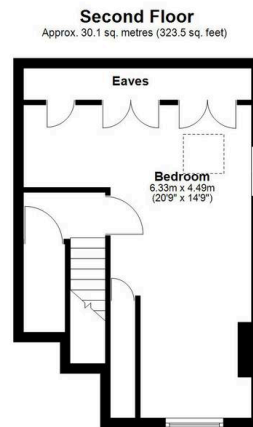
Upstairs, the accommodation is arranged over two floors. The first floor provides well-proportioned bedrooms alongside a newly fitted, contemporary bathroom, while the loft has been expertly converted to create an impressive principal bedroom with useful eaves storage.

Externally, the property enjoys a substantial rear garden, perfect for outdoor dining and relaxation. A standout feature is the purpose-built outbuilding, currently arranged as a home office and gym, along with a built-in seating area ideal for entertaining. A recently installed boiler adds further peace of mind.

Further benefits include previously approved planning permission for a rear extension and potential to extend the existing bathroom, offering scope for future enhancement.

Ideally positioned close to Ashted Village and approximately 200 metres from St Peter's Primary School.





Total area: approx. 151.2 sq. metres (1627.4 sq. feet)

Disclaimer: Please note this floor plan is for marketing purposes and is to be used as a guide only. All efforts have been made to ensure its accuracy. Plan produced using PlanUp.

