



Call: 02394 217317
Whatsapp: 0793 283 1587
Email: sarah@soldby.uk
Social media: @soldbySarahOliver
Website: www.soldby.uk



2 Wallington Road , Portsmouth, PO2 0HB

£265,000



2 Wallington Road

, Portsmouth, PO2 0HB

£265,000



Welcome to Wallington Road...

Located in the popular Wallington Road in the heart of Copnor, this well presented three bedroom end terraced house offers an excellent opportunity for families, first time buyers, or anyone seeking a spacious home in a desirable residential area. Boasting a single bay and forecourt, this charming property combines character with practicality, featuring open plan living and a flexible layout.

Upon entering, you are greeted by a spacious living room, offering ample space for multiple sofas and other furnishings. This seamlessly connects to the dining room, with space for a family table and chairs, creating a great room for socialising.

To the rear sits a kitchen, well equipped with a range of wall and floor mounted units, an oven with hob and over head extractor fan and ample work top space. A doorway leads you to the conservatory, offering versatility for either a store room, or additional lounge space, with views over the garden.

A practical and utility room sits just off the kitchen, providing additional storage and laundry space, as well as access to a convenient downstairs WC.

Upstairs, the property boasts three bedrooms. The master is complete with fitted wardrobes, and offers space for a king size bed and other furnishings. Bedroom two is a comfortable double, and bedroom three makes an excellent study or children's room.

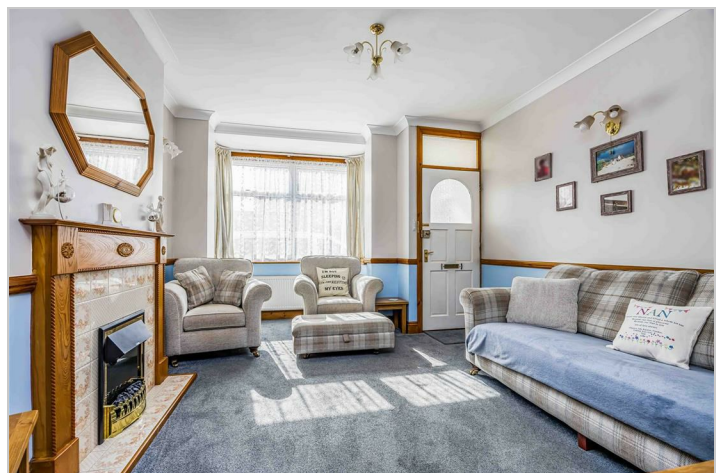
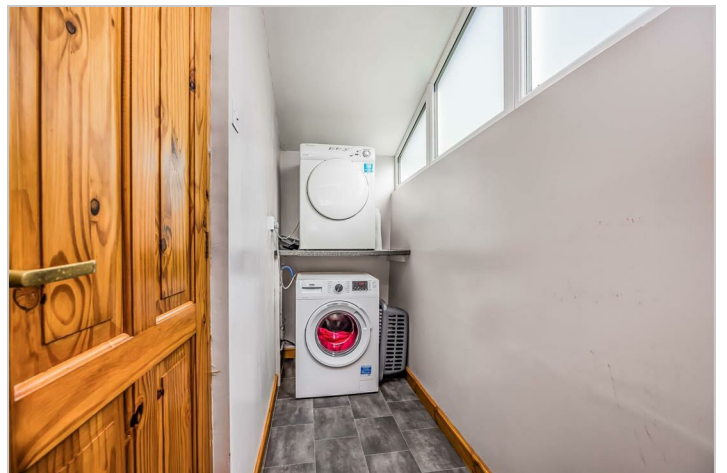
A family bathroom is situated upstairs, with a bath, over head shower, sink and W.C.

An additional benefits of the property is the loft space, the gas central heating and the double glazing throughout.

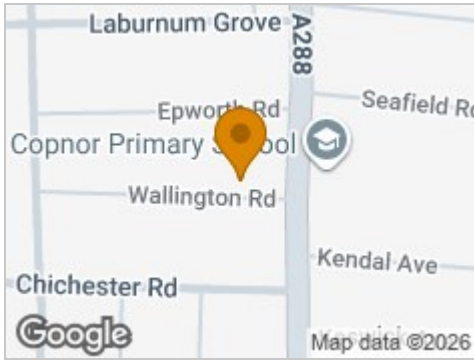
Situated in Wallington Road, you are closely located to a range of local amenities, including shops, cafes and transport links. Good schools are nearby, making this a great home for families.

A viewing is highly advised to appreciate what this property has to offer. Please contact the office to arrange your appointment.

- THREE BEDROOM END TERRACED HOUSE
- UTILITY ROOM & DOWNSTAIRS TOILET
- OPEN PLAN LIVING
- REAR GARDEN WITH SIDE ACCESS
- CLOSE TO LOCAL AMENITIES & GOOD SCHOOLS



Road Map



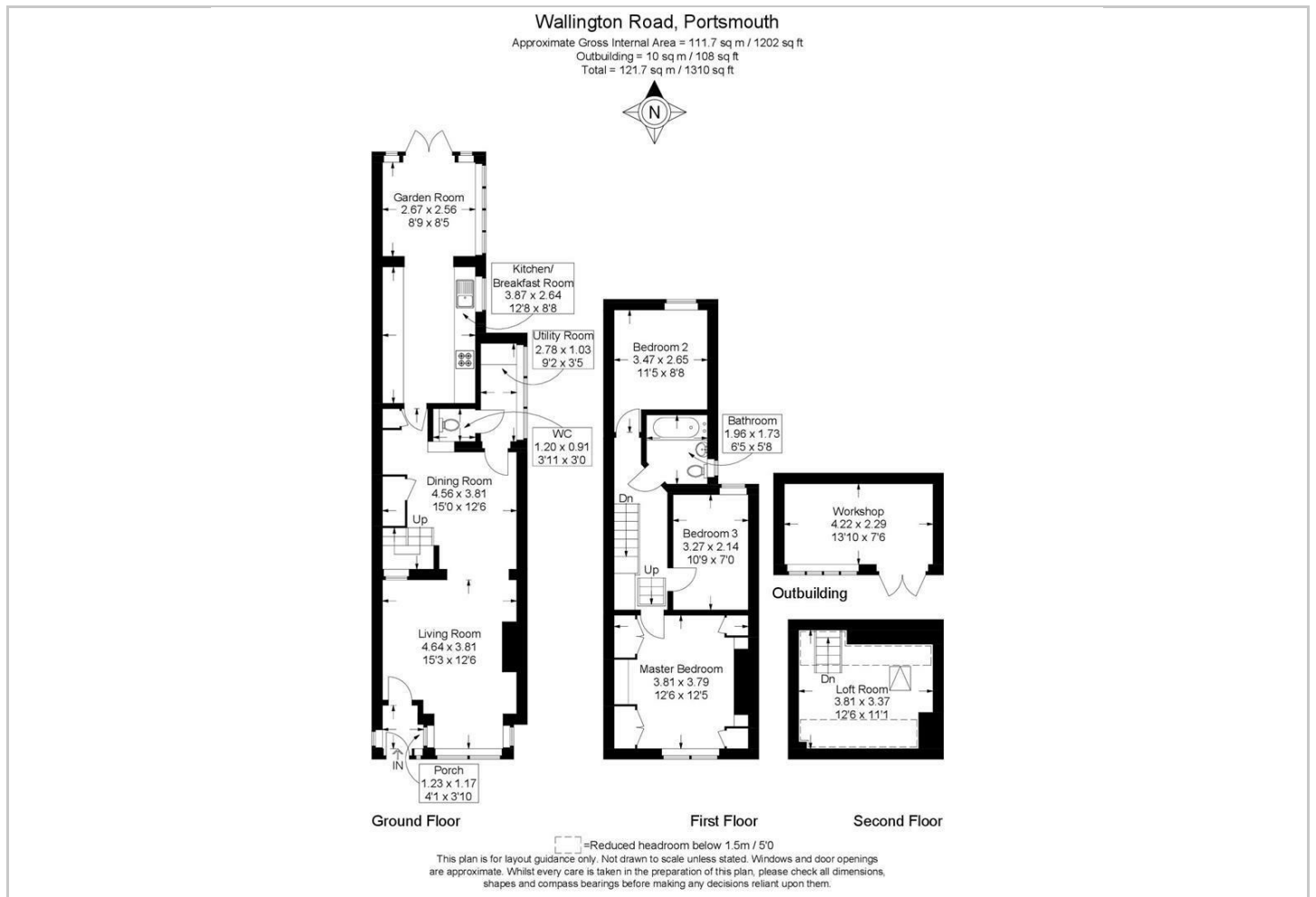
Hybrid Map



Terrain Map



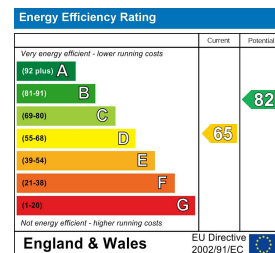
Floor Plan



Viewing

Please contact our Central Office on 02394 217317 if you wish to arrange a viewing appointment for this property or require further information.

Energy Efficiency Graph



These particulars, whilst believed to be accurate are set out as a general outline only for guidance and do not constitute any part of an offer or contract. Intending purchasers should not rely on them as statements of representation of fact, but must satisfy themselves by inspection or otherwise as to their accuracy. No person in this firm's employment has the authority to make or give any representation or warranty in respect of the property.