



Price

£200,000

Freehold

2x  2x  1x 

**Bridge Mead Mews,
Avenue Road, Sandown,
Isle of Wight, PO36**

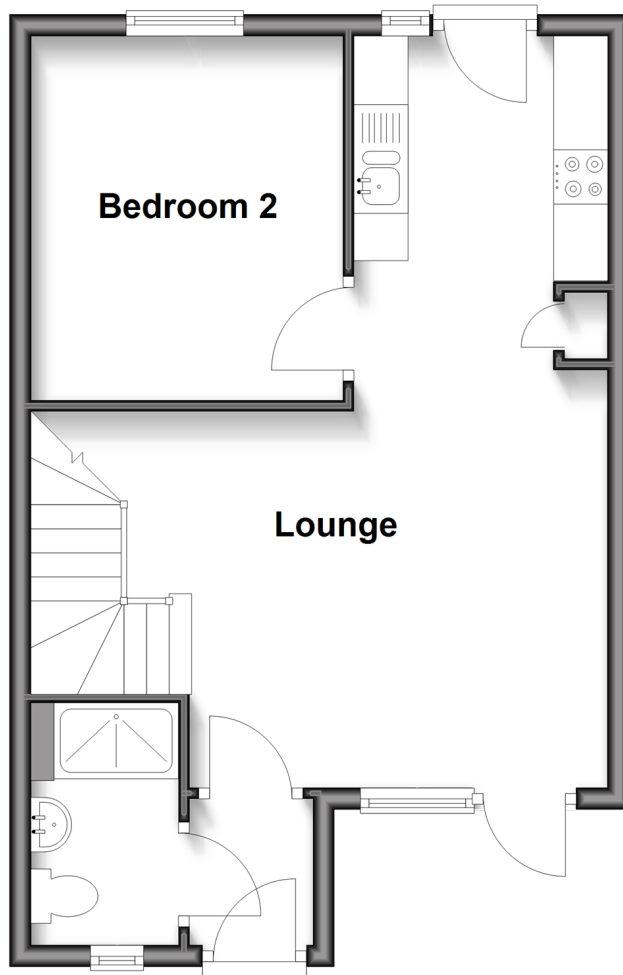
OVER 60?

Secure this property
for up to **59% less!**

Pittis 
Helping you move forwards

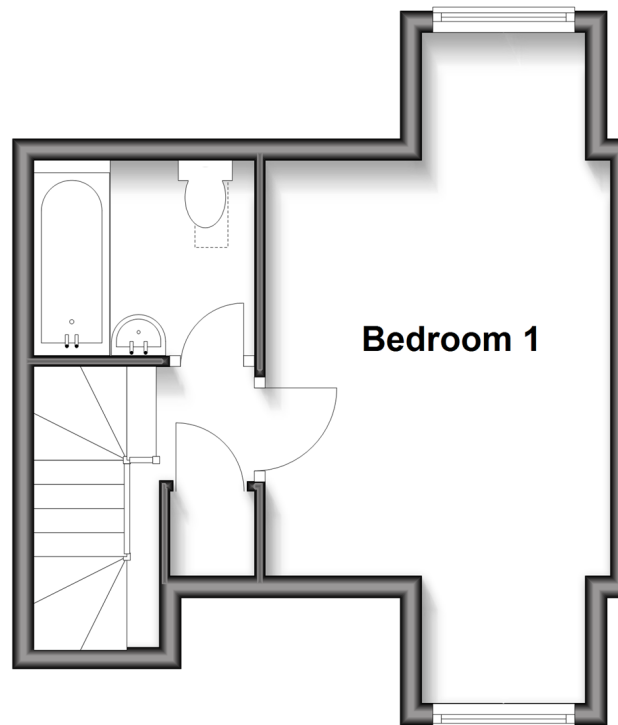
Ground Floor

Approx. 40.7 sq. metres (437.6 sq. feet)



First Floor

Approx. 24.7 sq. metres (265.7 sq. feet)



Accommodation

GROUND FLOOR

Hallway

Lounge: 16'4 x 13'5 (4.98m x 4.09m)

Kitchen: 8'5 x 4'8 (2.57m x 1.42m)

Bedroom 2: 10'8 x 9'8 (3.25m x 2.95m)

Shower Room

FIRST FLOOR

Landing

Bedroom 1: 20'7 x 10'9 (6.28m x 3.28m)

Bathroom

OUTSIDE

Front & Rear Gardens

Allocated Parking



Main features

- Beautifully presented modern end of terraced house
- Built in 2013 and situated in a private development on the outskirts of Sandown
- Allocated parking space
- Private enclosed garden to the rear
- Situated in a quiet location but also within a short walking distance to Sandown town centre and the beaches



Nearest Schools

The Bay CE School
Broadlea Primary School
Shanklin C of E Primary Schools
Gatten & Lake Primary School
Shanklin Pre-School & Nursery



Transport Information

Local buses providing Island wide connections plus local train station with direct links to Ryde Pier Head.



Address

Bridge Mead Mews, Avenue Road, Sandown, Isle of Wight, PO36



Directions

For directions to this property please contact us.

