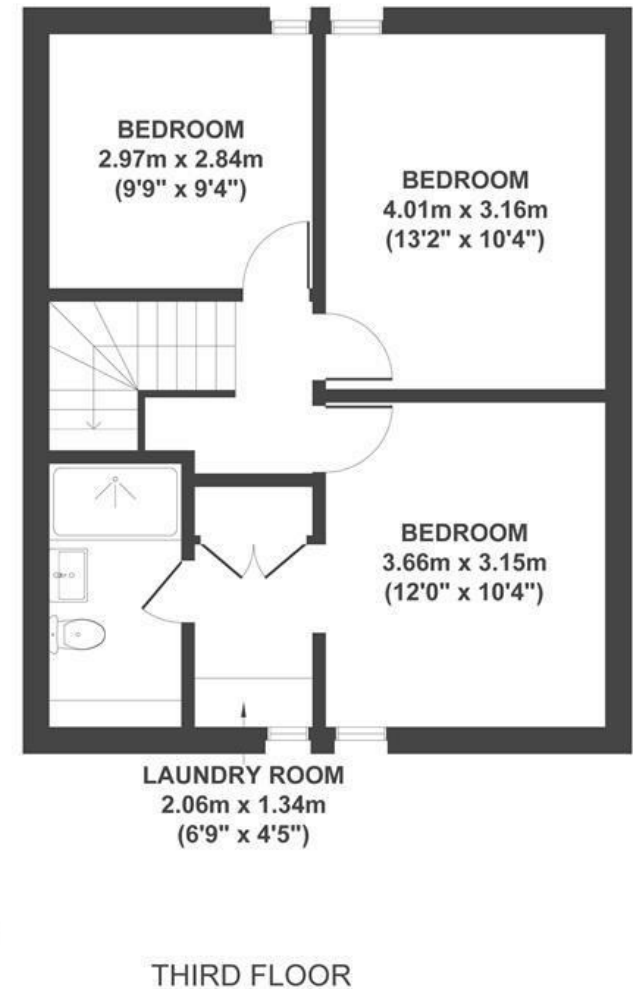
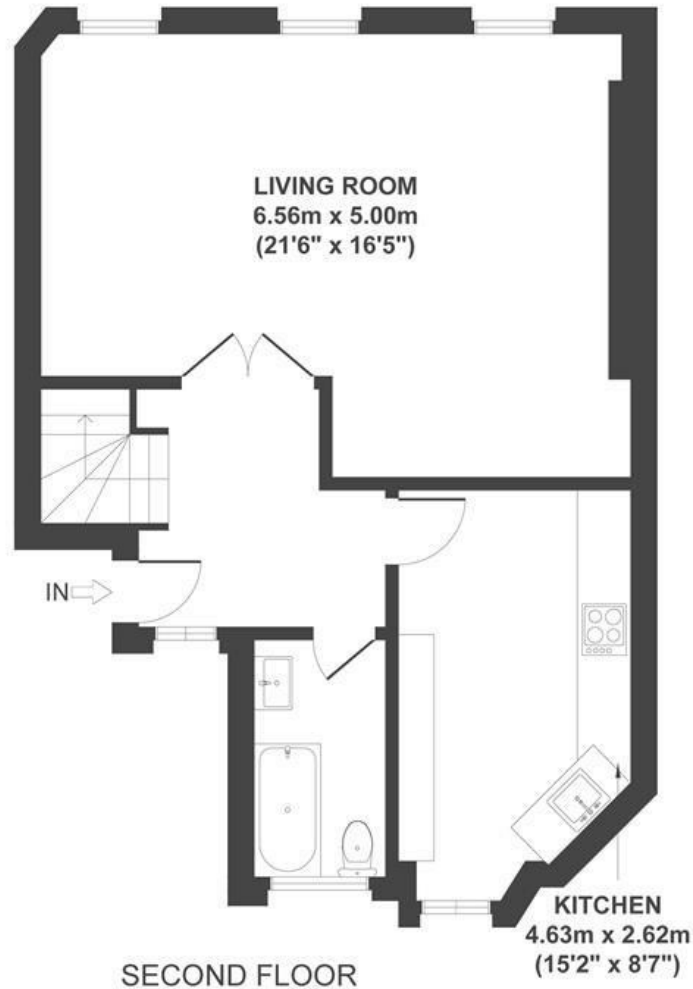


# Albermarle Row

## HOTWELLS

APPROXIMATE FLOOR AREA  
104 SQM / 1119 SQFT



Boardwalk

# Albermarle Row

## , BRISTOL



£485,000



BS8 4LY



3 Bedrooms



2 Bathrooms

*"This has been a wonderful home that as a maisonette, truly feels like a house with the added advantage of being the top two floors giving us beautiful views over South Bristol from our light and bright living and dining space. We love being able to walk out the door to our favourite restaurants and cafes in Clifton Village and the Harbourside within minutes and weekend walks around Ashton Court and Leigh Woods where you feel like you have truly escaped the city but have only had to walk twenty minutes."*

