



Invicta Road, SE3

£325,000

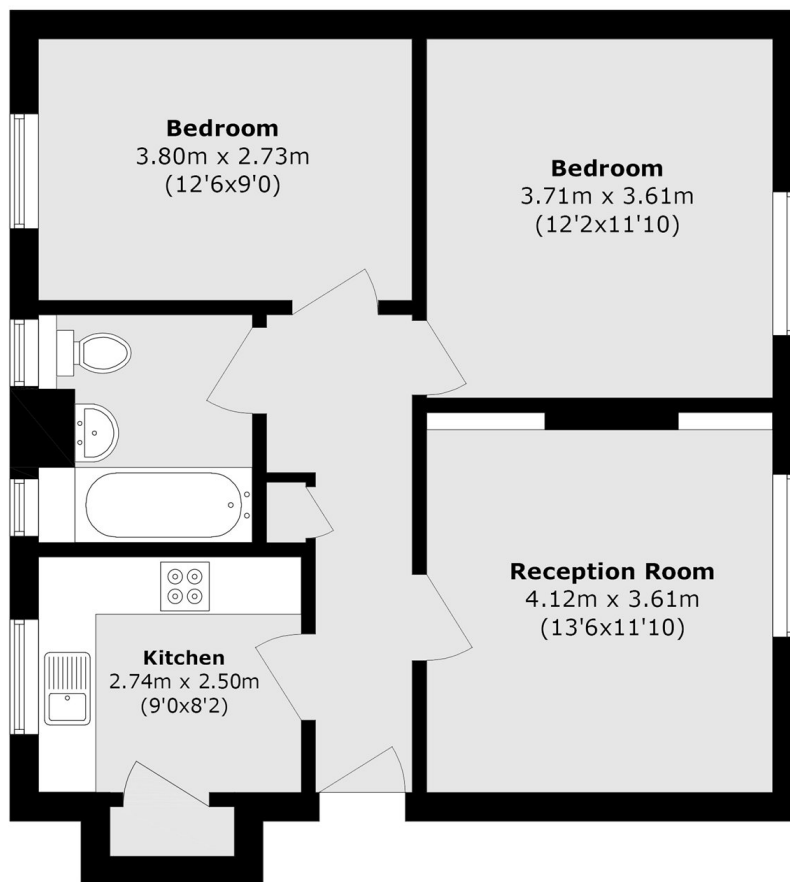
A beautifully presented two double bedroom ground floor flat, ideally located in a prime position within Blackheath, offering well-balanced living space throughout. The property comprises a generous reception room, perfect for both everyday living and entertaining, alongside a separated kitchen. Both bedrooms are spacious doubles, complemented by a modern family bathroom. The property further benefits from an abundance of natural light, creating a bright and airy feel throughout. An excellent opportunity for first-time buyers, downsizers, or investors looking to secure a home in this highly sought-after location.

Invicta Road is ideally located within easy reach of Westcombe Park station and convenient bus links to North Greenwich. The shops, cafés, and amenities of Blackheath Royal Standard are just a short walk away, making this a fantastic location for both connectivity and lifestyle.

Features

- Two Double Bedroom
- Ground Floor Flat
- Close To Shops & Bus Routes
- Beautifully Decorated
- Communal Garden
- Close To Westcombe Park Station

Invicta Road,
London, SE3



Total area (approx.): 61.2 sq. m (658.8 sq. ft)