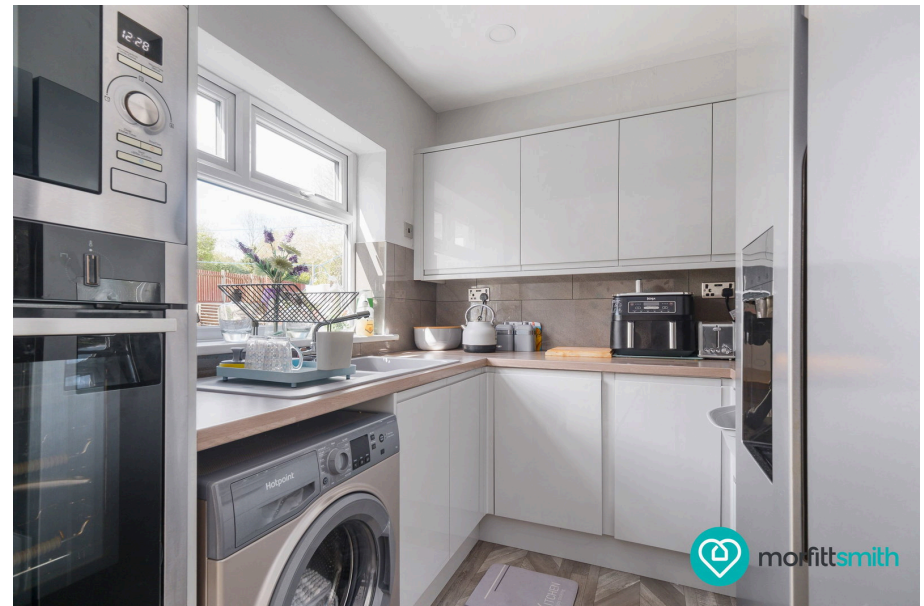
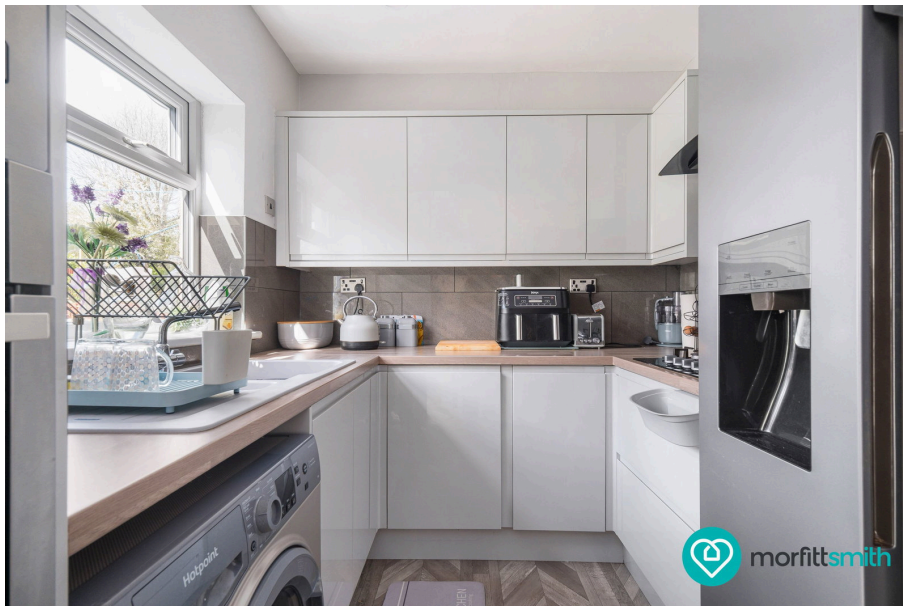




Jardine Street, Wincobank, S9 1NA

Offers In Region Of £150,000

3 1 1



A spacious and versatile three-bedroom semi-detached home, arranged over four levels and offering well-proportioned accommodation extending to approximately 1,337 sq. ft.

Ideal for families, professionals, or those working from home, this property provides flexible living space throughout. The lower ground floor features a generous garage along with a separate office, perfect for remote working or additional storage.

To the ground floor is a superb open-plan kitchen, lounge, and dining area, creating a fantastic social hub for modern living, with direct access to a bright conservatory overlooking the rear garden.

The first floor hosts three well-proportioned bedrooms, including a spacious master, together with a family bathroom. A further staircase leads to a substantial loft room, offering excellent additional space ideal for use as a fourth bedroom, guest room, or home office.

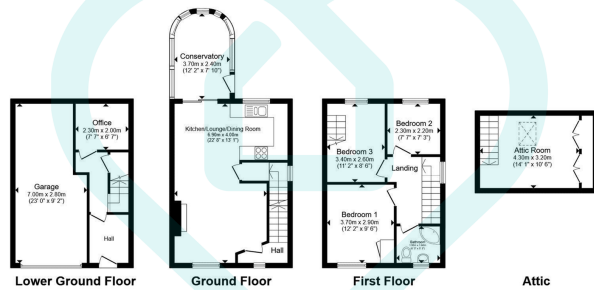
Perfectly positioned for convenience, the property enjoys excellent transport links with easy access to the M1 motorway, while being close to Meadowhall Shopping Centre and Meadowhall railway station, providing a wide range of shopping, dining, and transport facilities.

Early viewing is highly recommended to fully appreciate the space, flexibility, and prime location this superb home has to offer.

Wincobank is a historic and well-established district located to the northeast of Sheffield city centre. Known for its strong sense of community and convenient location, it offers a mix of residential options, from traditional terraced homes to modern family houses.

The area is perhaps best known for Wincobank Hill and the ancient Iron Age fort, which provides scenic walks and panoramic views over the surrounding countryside and city skyline. Green spaces and local parks make it appealing to families and those who enjoy outdoor activities.



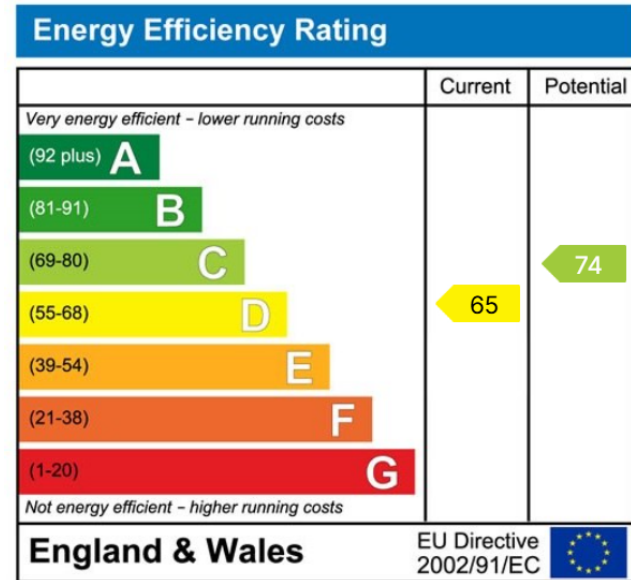
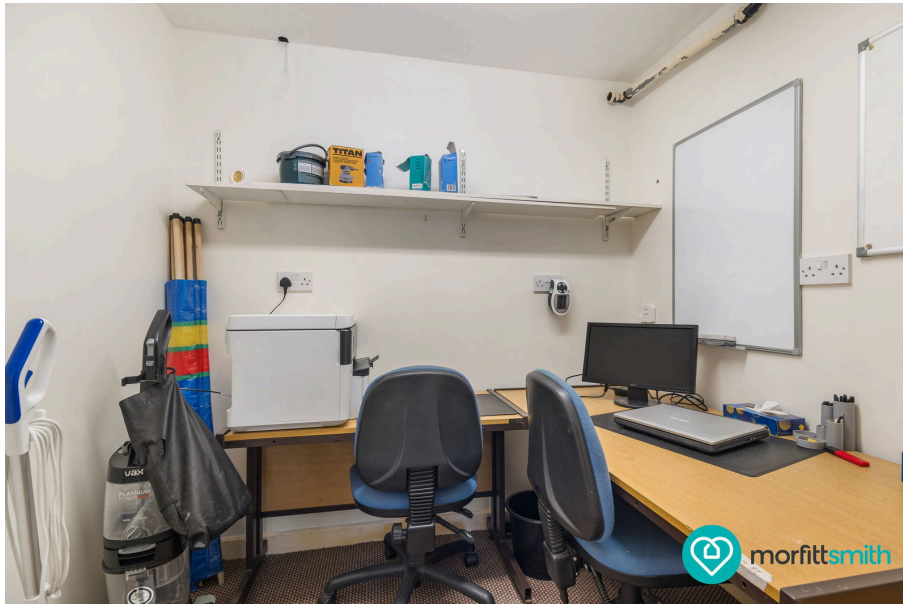


Total floor area 124.2 m² (1,337 sq.ft.) approx

This floor plan is for illustrative purposes only. All measurements and layouts are approximations and do not necessarily capture the precise specifications of the property. No responsibility is taken for any error, omission, or misstatement. We always recommend viewing in person to confirm the exact floor plan of a property. Made with Metropix.



- Spacious three-bedroom semi-detached home over four levels
- Open-plan kitchen, lounge, and dining area on the ground floor
- Three well-proportioned first-floor bedrooms, including a large master
- Total floor area approximately 1,337 sq. ft. (124.2 m²)
- Close to Wincobank Hill, local parks, shops, and schools
- Generous lower ground floor garage and separate office space
- Bright conservatory overlooking the rear garden
- Family bathroom plus substantial loft room for extra living space
- Located in Wincobank, a historic district with strong community feel
- Excellent transport links



Sales | Lettings | New Homes

VAT Reg Number: 191 3588 84
 Company Reg Number: 08610489
 Company Reg Address: 67 Middlewood Road, Hillsborough, Sheffield, S6 4GX.

The MorfittSmith Building
 67 Middlewood Road
 Hillsborough
 Sheffield
 S6 4GX

Get in touch - arrange an appointment



0114 232 1764
 sales@morfittsmith.co.uk
 lettings@morfittsmith.co.uk
 newhomes@morfittsmith.co.uk
 www.morfittsmith.co.uk



@MorfittSmith
 @MorfittSmith
 MorfittSmith
 Estate & Letting Agent