



## Mecklenburgh Street, WC1N

### £1,000,000

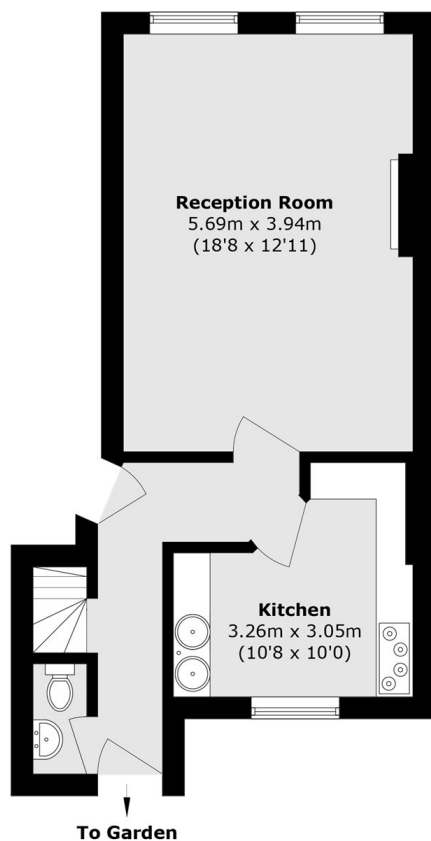
A great sized, two double bedroom home with a separate eat-in kitchen and private patio garden. The home retains many period features including hardwood flooring, high ceilings with cornicing, wooden window shutters and feature fireplace.

Located just moments from Lamb's Conduit Street, known for its charming boutiques, cafés and restaurants. With the Royal Courts of Justice and legal district within easy reach, the location is perfect for professionals in law. Excellent transport links, including nearby tube stations and bus routes, provide effortless access across the city, combining convenience with a prime central setting.

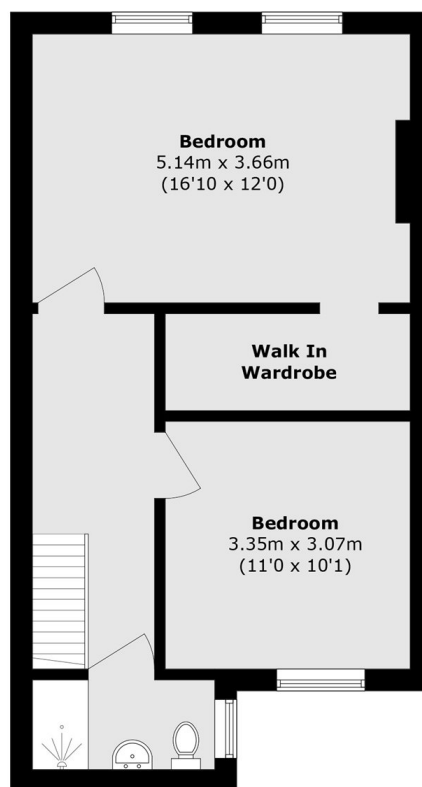
### Features

- Two Double Bedrooms
- Private Garden
- Eat In Kitchen
- Original Features
- Sash Windows
- No Onward Chain

# Mecklenburgh Street, London, WC1N



**Ground Floor**



**Lower Ground Floor**

Total area (approx.): 87.8 sq. m (945.0 sq. ft)