



Rosedale Windmill Lane, Balsall Common

Guide Price £400,000

bayzos.

THE MOST HELPFUL ESTATE AGENT



Rosedale Windmill Lane

Balsall Common, Coventry

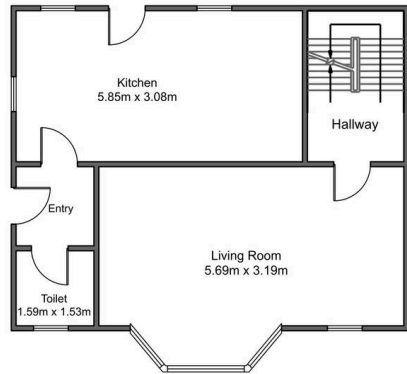
Sought after Location of Balsall Common | EPC Rating:
D, potentially B | Total Floor Area Approx. 98 Sq. M. |
Low Maintenance Mature Garden | Cottage Style
Victorian Property | Great Transport Link | Close to
Local Amenities | Kitchen & Diner | Downstairs W.C |
Garage & Driveway
Council Tax band: E

Tenure: Freehold

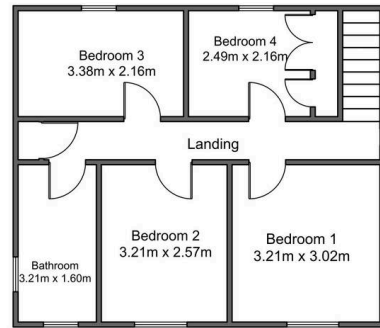
EPC Energy Efficiency Rating: D

EPC Environmental Impact Rating: D

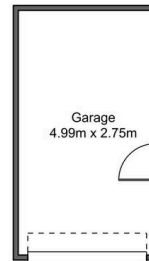




Ground Floor approx area: 52.33m²



First floor approx area: 48.32m²





Bayzos Estate Agents

Bayzos Head Office, Bridge Street, c/o 2nd Floor - WR11 4SQ

0330 124 6533 • info@bayzos.co.uk • bayzos.co.uk/

bayzos.