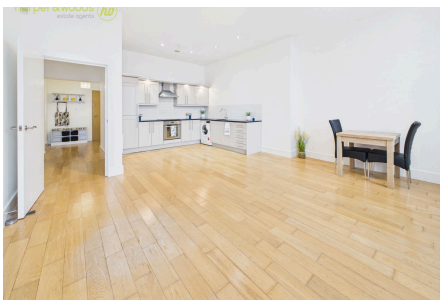


Pier House, Tower Promenade, New Brighton

£145,000 | Council Tax Band B | EPC Rating D

 1  1  1



Having the added benefit of being sold with no chain, this one-bedroom apartment is set on the ground floor this impressive building in the heart of New Brighton. Beautifully presented and upgraded throughout, this lovely apartment offers views across the promenade and over the river towards Liverpool. This property should be of particular interest to someone looking to get on the property ladder or those wanting an easy end of chain downsize! Set in a prime location only a short walk to the amenities in New Brighton including Morrison's supermarket, cinema and rail/bus links. Interior: secure communal entrance with easy access to the ground floor private entrance door, good-sized inviting hallway with storage cupboard, living/dining kitchen, bedroom and modern shower room. Exterior: allocated parking space. A must see!

Key Features

- Ground Floor Apartment
- Sold With No Chain
- Allocated Parking Space
- Modern Shower Room
- Council Tax Band B
- One Bedroom
- Views of the River
- Central Heating
- Excellent Location
- EPC Rating D

