



Newton Avenue, W3

£550,000

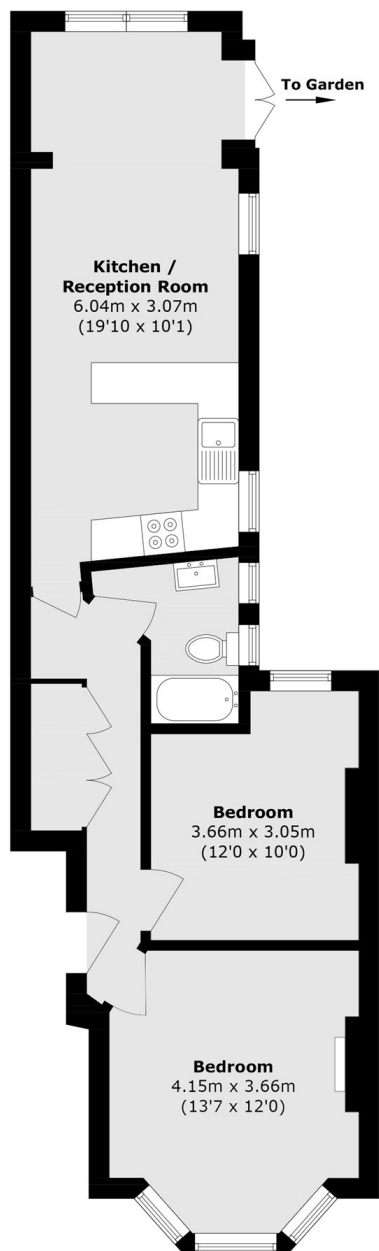
This ground-floor, two-bedroom period conversion is perfectly positioned on the Chiswick/Acton border. The property is a mixture of period features with a modern touch, open plan kitchen / living room and a rear private garden, Offered with a share of the freehold and no onward chain.

Features

Ground Floor Flat
Period Conversion
Two Double Bedroom
Private Rear Garden
Share Of Freehold
No Onward Chain

Under a quarter of a mile from South Acton station (Overground) and just over half a mile from Acton Town tube station (District and Piccadilly lines).

Newton Avenue, London, W3



Total area (approx.): 60.2 sq. m (647.9 sq. ft)