



# Princes House

37-39 Kingsway, WC2B

£5,200 per month  
(£1,200 per week)

Princes House is a contemporary & stylish block of residences in the heart of the West End. Offering two double bedrooms, open plan kitchen and living space, modern bathroom and separate WC.

**CHESTERTONS**



# Princes House

37-39 Kingsway, WC2B

- 2 Double Bedrooms
- 24 hour concierge
- Air cooling
- Furnished

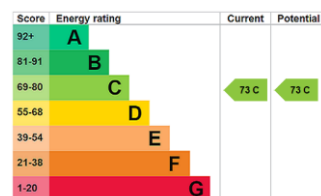


Princes House is a contemporary & stylish block of residences in the heart of the West End. Offering two double bedrooms, bright open plan kitchen and living space, modern bathroom and separate WC.

The property benefits from 24 hour concierge, air cooling, wooden flooring in the living space. Located on the sixth floor with lift access. The smart layout is great for two sharers or a couple looking to be centrally located and positioned in a secure development.

Holborn and Covent Garden stations are both under a 10 minute walk away, along with many bus routes nearby on Kingsway and Aldwych.

**Minimum Term:** 12 months  
**Deposit Required:** £7,200.00  
**Local Authority:** City of Westminster  
**Council Tax Band:** G  
**EPC Rating:** C  
**Furnished**

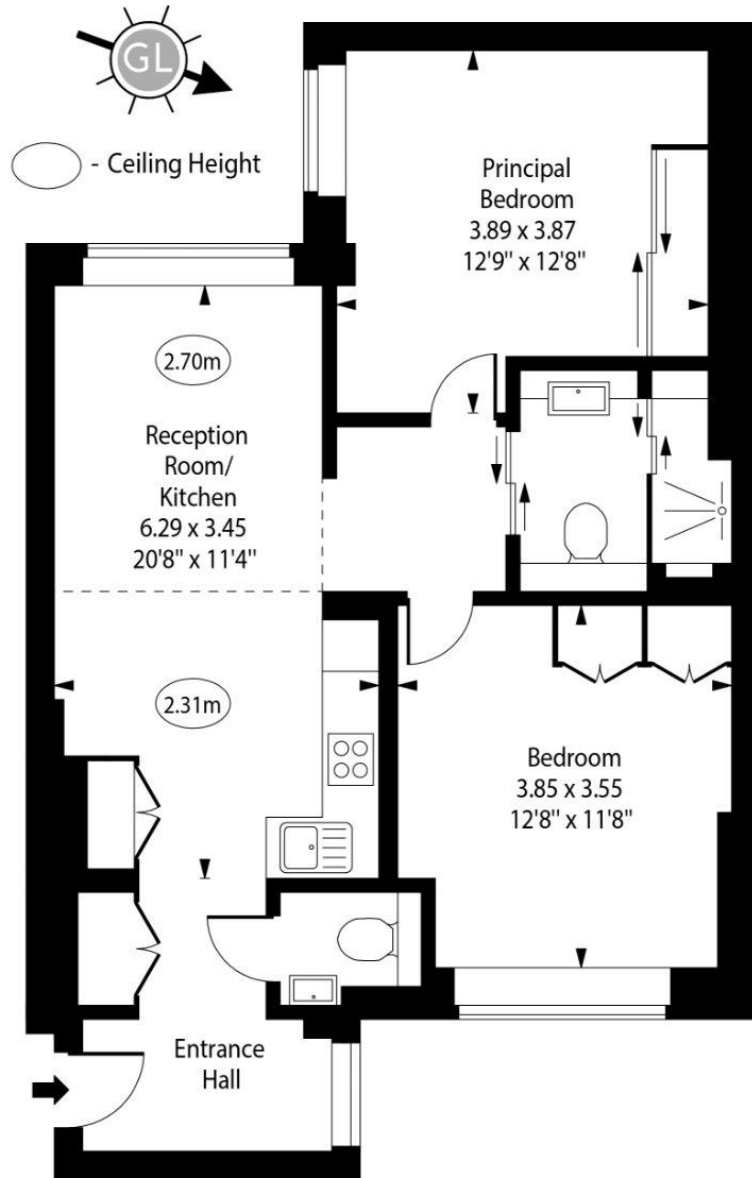


### *Chestertons Covent Garden Lettings*

196 Shaftesbury Avenue  
 Covent Garden  
 London  
 WC2H 8JF  
 coventgardenlettingsusers@chestertons.co.uk  
 02030408400  
 chestertons.co.uk

Additional tenant charges apply (fees apply to non-AST tenancies only)  
 Tenancy Agreement Fee: £300  
 References per Tenant/Guarantor: £60  
 Inventory check (approx. £100 – £250 inc. VAT)  
 chestertons.co.uk/property-to-rent/applicable-fees

# Princes House, Kingsway



Sixth Floor

Approx Gross Internal Area      708 Sq Ft - 65.77 Sq M

Every attempt has been made to ensure the accuracy of the floor plan shown. However, all measurements, fixtures, fittings, and data shown are approximate interpretations and for illustrative purposes only. Measured according to the RICS. Not To Scale.

[www.goldlens.co.uk](http://www.goldlens.co.uk)

Ref. No. 031037D

