

Allitsen Road, NW8

£850,000

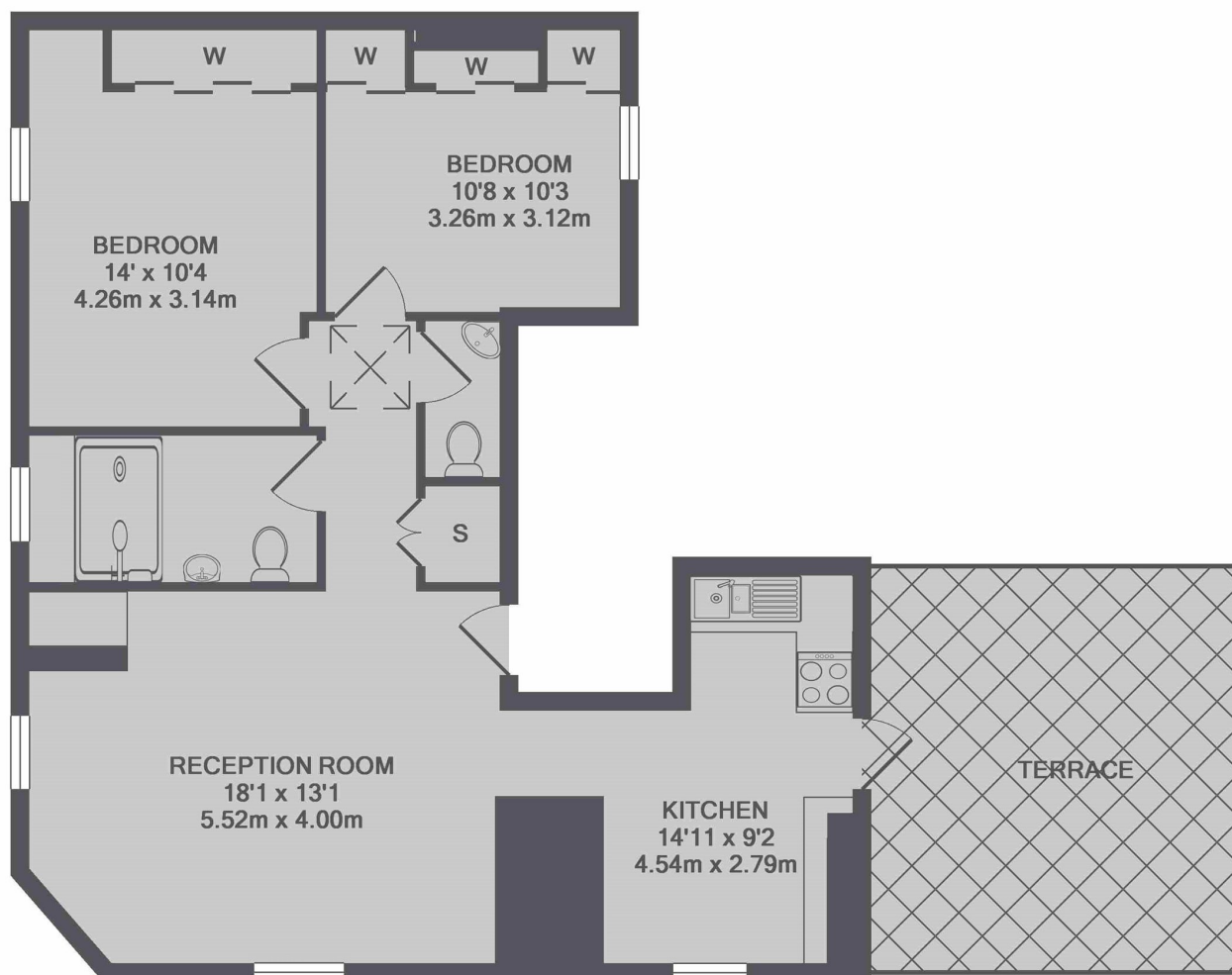
A beautifully presented modern two bedroom apartment extending to approximately 800 sq ft, set on the third (top) floor of a characterful period building. Highlights include a separate eat-in kitchen opening onto an impressive private roof terrace, guest cloakroom, and well proportioned bedrooms.

Perfectly positioned on St John's Wood High Street, Newton Court offers immediate access to boutique shops, cafés, and renowned restaurants, including The Ivy. Lord's Cricket Ground and the open spaces of Regent's Park are close by. Excellent transport links are provided by St John's Wood Underground Station (Jubilee Line).

Features

- Two Bedrooms
- Approximately 800 Sq.Ft
- Private Roof Terrace
- Excellent Location
- Chain Free
- Long Lease

Allitsen Road, London, NW8



TOTAL APPROX. FLOOR AREA 753 SQ.FT. (70.0 SQ.M.)

Dexters

St. John's Wood
4-6 St Ann's Terrace
London
NW8 6PJ
Sales
020 7483 6300

Energy Rating: D. We aim to make our particulars both accurate and reliable. However they are not guaranteed; nor do they form part of an offer or contract. If you require clarification on any points then please contact us, especially if you're traveling some distance to view. Please note that appliances and heating systems have not been tested and therefore no warranties can be given as to their good working order.

 **RICS** | Regulated
Estate Agent
and Letting Agent

[dexters.co.uk](https://www.dexters.co.uk)