



15 Fearn Avenue Bradwell, Newcastle-under-Lyme, ST5 8ND

I feel good, I knew that I would now, I feel good, I knew that I would now, so good, so good, I got you... this newly renovated semi-detached BUNGALOW in Bradwell, Newcastle-under-Lyme. This property impresses from the moment you enter the driveway. Boasting a modern, luxury fitted Kitchen, utility room, a large lounge with a bay window, TWO double bedrooms and a contemporary fitted bathroom. The exterior is just as impressive, with a large paved driveway leading to a detached garage, and a low maintenance rear garden with newly planted shrubs and trees! Wow, I feel good, I knew that I would now, you could feel it too, book your viewing at Dunn & Rate today!

Offers in the region of £210,000

15 Fearn Avenue

Bradwell, Newcastle-under-Lyme, ST5 8ND



- NEWLY RENOVATED
- UTILITY ROOM
- LARGE PAVED PRIVATE DRIVEWAY
- SOLD WITH NO UPWARD CHAIN
- STUNNING SEMI DETACHED BUNGALOW
- LARGE LOUNGE WITH BAY WINDOW
- LOW MAINTENANCE REAR GARDEN
- MODERN FITTED KITCHEN WITH INTEGRATED APPLIANCES
- TWO DOUBLE BEDROOMS
- DETACHED GARAGE

GROUND FLOOR

Entrance Hall

9'1" x 6'10" (2.79 x 2.09)

A composite double glazed door opens to the side aspect. Storage cupboard and loft access hatch.

Kitchen

8'9" x 8'5" (2.67 x 2.58)

A double glazed window looks out to the side aspect. Fitted with a range of wall and base storage units, coordinating work surface areas and inset stainless steel sink and side drainer. Integrated appliances include, electric oven and hob with extractor fan above, dishwasher and fridge/freezer. Electric vertical radiator, ceiling spotlights and under cupboard lighting.

Utility Room

10'9" x 4'11" (3.29 x 1.50)

Double glazed windows to the side and rear aspect, and a door opens to the rear garden. Fitted with a work top and storage cupboard, space and plumbing for a washing machine. Electric vertical radiator and ceiling spotlights.

Lounge

14'3" x 9'9" (4.36 x 2.99)

A double glazed bay window looks out to the front aspect. Electric radiator.

Bedroom One

11'9" x 9'10" (3.60 x 3.00)

A double glazed window looks out to the rear aspect. Electric radiator.

Bedroom Two

8'10" x 7'11" (2.70 x 2.43)

A double glazed window looks out to the side aspect and a feature window to the front aspect. Electric radiator.

Bathroom

5'7" x 5'4" (1.72 x 1.63)

A double glazed privacy window looks out to the side aspect. Fitted suite comprising of bath with shower overhead, Low Level WC and wash hand basin with vanity unit. Fitted with an extractor fan, ceiling spotlights and electric vertical radiator.

EXTERIOR

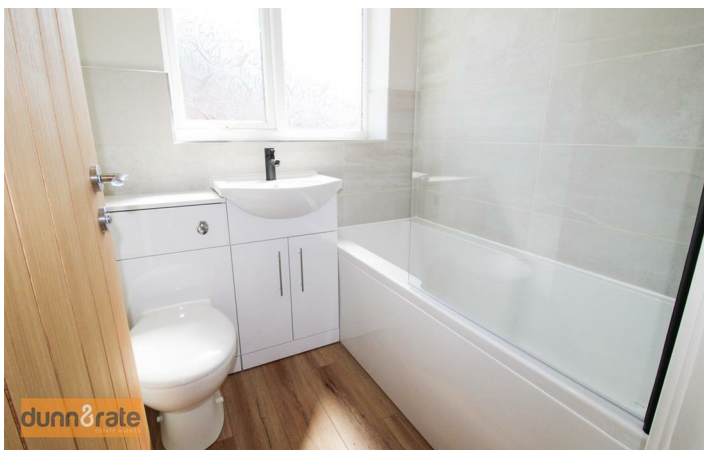
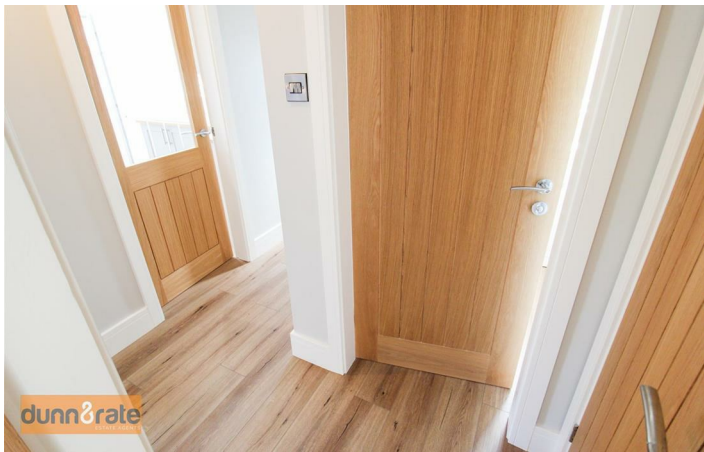
The front of the property is laid to lawn with a paved driveway leading

to a detached garage. The rear garden is laid to lawn, with a paved patio and a newly planted tree and shrub border.

Garage

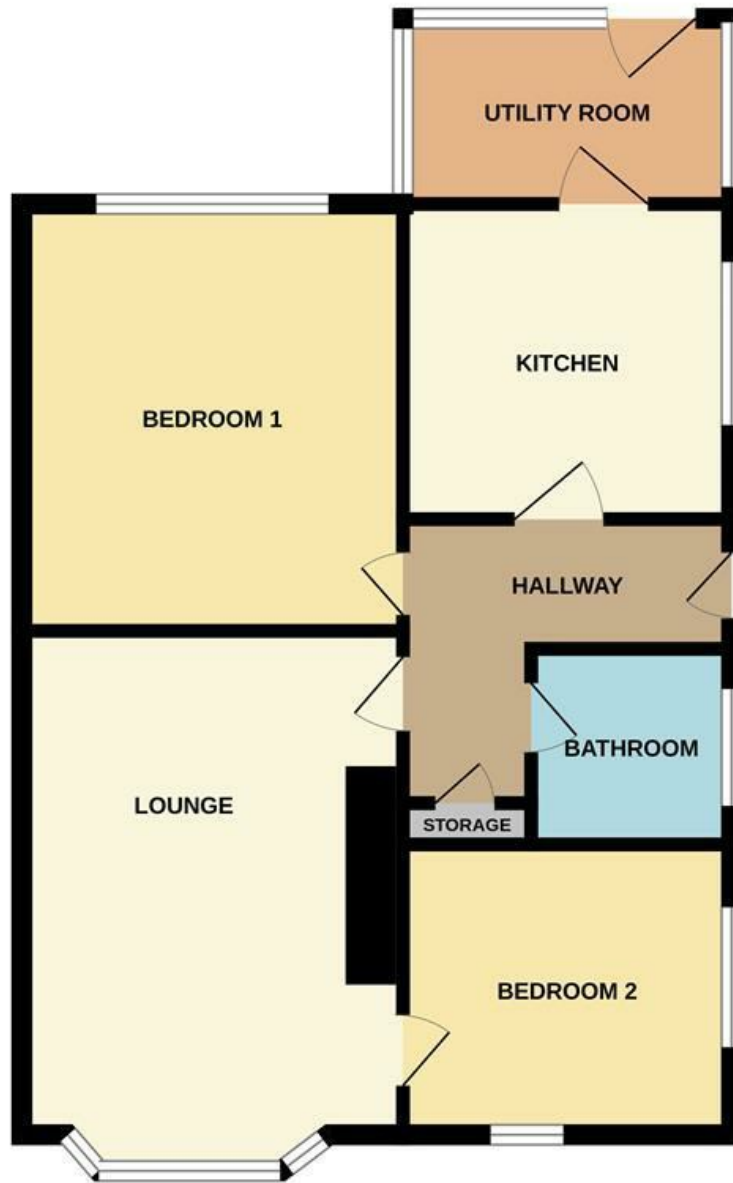
15'9" x 8'1" (4.81 x 2.48)

Up and over door to the front, and a double glazed window to the side aspect.



Floor Plan

GROUND FLOOR



Whilst every attempt has been made to ensure the accuracy of the floorplan contained here, measurements of doors, windows, rooms and any other items are approximate and no responsibility is taken for any error, omission or mis-statement. This plan is for illustrative purposes only and should be used as such by any prospective purchaser. The services, systems and appliances shown have not been tested and no guarantee as to their operability or efficiency can be given.
Made with Metroplex ©2026

These particulars, whilst believed to be accurate are set out as a general outline only for guidance and do not constitute any part of an offer or contract. Intending purchasers should not rely on them as statements of representation of fact, but must satisfy themselves by inspection or otherwise as to their accuracy. No person in this firm's employment has the authority to make or give any representation or warranty in respect of the property.

