



Daysbrook Road, SW2

£290,000

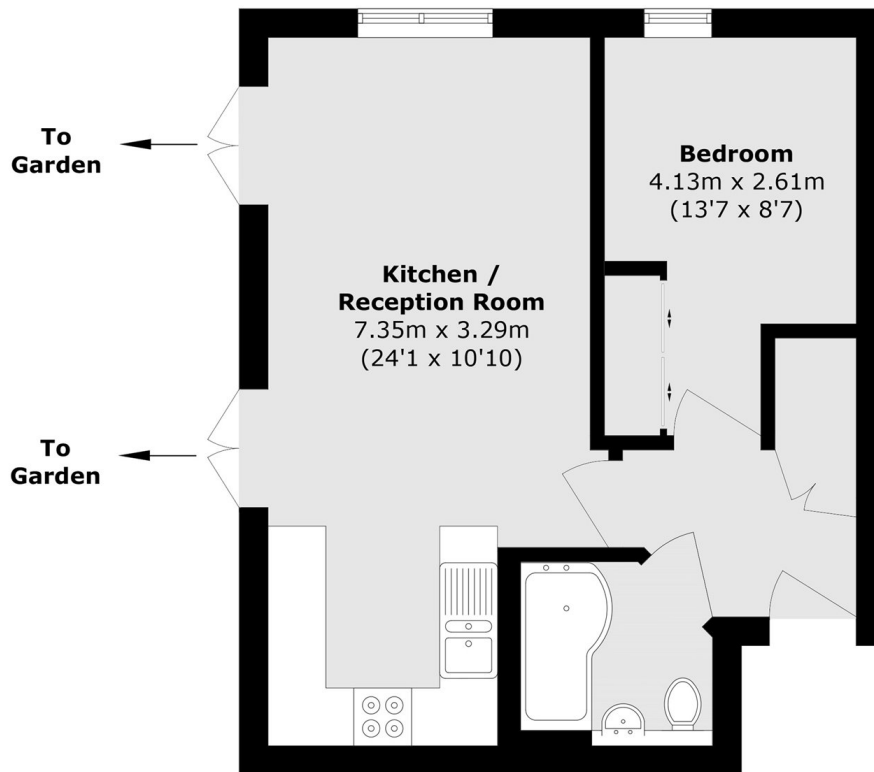
Set within this modern development, this one bedroom ground floor flat benefits from a modern kitchen, a large living room, and direct access to a shared garden. The property is offered to the market with no onward chain.

Daysbrook Road is conveniently located within a short walk of local shops and amenities. Streatham Hill station and Brixton Underground are within easy reach, providing excellent transport links into the City via London Victoria.

Features

- One Double Bedroom
- Direct Access to a Shared Garden
- No Onward Chain
- Ground Floor
- Modern Kitchen
- Private Patio

Daysbrook Road, London, SW2



Total area (approx.): 42.8 sq. m (460.6 sq. ft)