



6 Parkside Gardens, Eastville, Bristol, BS5 6TZ

£310,000

This ideal first purchase is situated a stones through from Purdown Open Space as well as good access to Bristol and the M32, and offers an opportunity for someone wishing to stamp their own mark on a property. In brief the accommodation comprises hallway, kitchen, full width lounge and conservatory providing ideal dining space. Upstairs are two double bedrooms and bathroom. The property benefits from upvc double glazing, gas central heating via combination boiler, front garden which could be a driveway and low maintenance courtyard garden to the rear. Energy Rating C, Council Tax Band B.

- Cul-De-Sac
- Terraced Home
- Two Bedrooms
- Kitchen
- Lounge
- Conservatory
- Double Glazing
- Gas Central Heating
- Potential Driveway
- Courtyard Garden

Viewing

Please contact our Brunt & Fussell Ltd Office on 01179566004 if you wish to arrange a viewing appointment for this property or require further information.



2



1



1



C

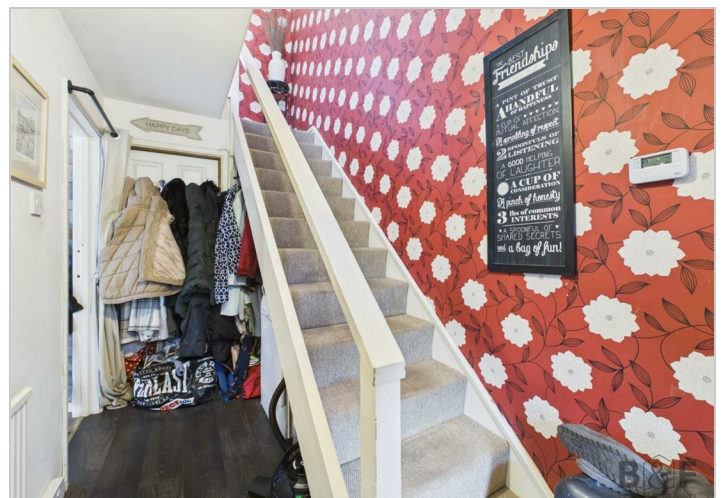
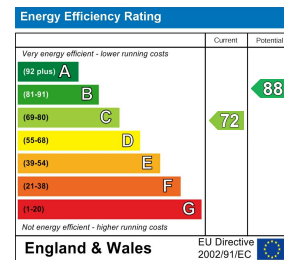
Floor Plan



Area Map



Energy Efficiency Graph



These particulars, whilst believed to be accurate are set out as a general outline only for guidance and do not constitute any part of an offer or contract. Intending purchasers should not rely on them as statements of representation of fact, but must satisfy themselves by inspection or otherwise as to their accuracy. No person in this firm's employment has the authority to make or give any representation or warranty in respect of the property.

141 High Street, Staple Hill, Bristol, BS16 5HQ

Tel: 01179566004 Email: info@bruntandfussell.co.uk www.bruntandfussell.co.uk