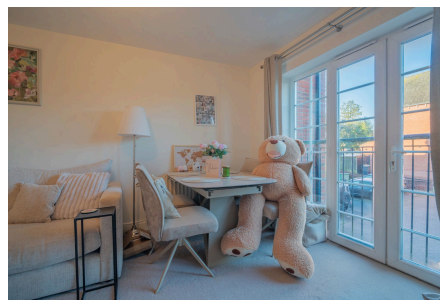


Fulford Close, Wythall, Birmingham, B47 6HJ

£190,000

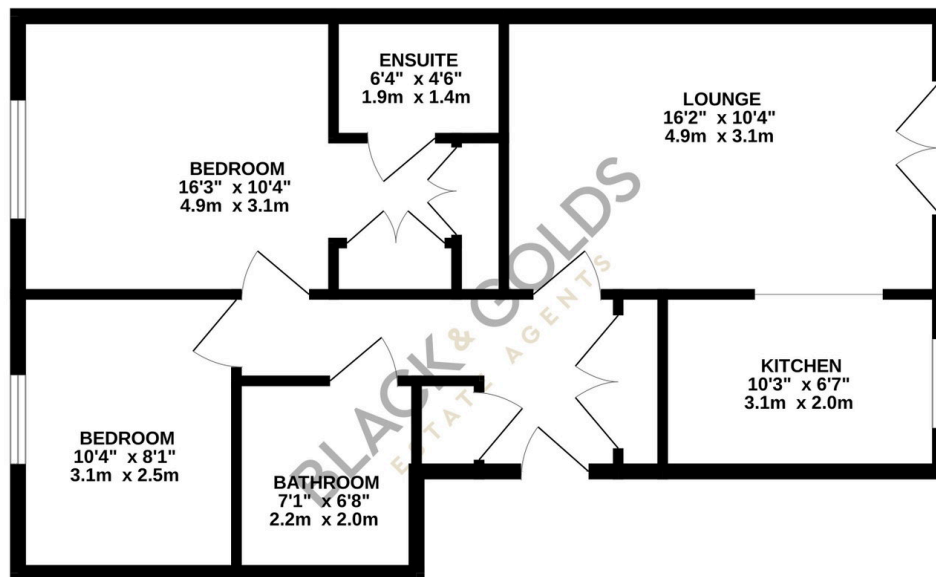
2 2 1



Viewings recommended for this superbly Presented Two Bedroom First Floor Apartment with Open Rear Views

Key Features

- Superbly presented first floor apartment
- Open views to the rear
- Modern fitted kitchen
- Principal bedroom with dressing area and en-suite
- Allocated and visitor parking
- Sought-after cul-de-sac location in Wythall
- Spacious lounge diner with Juliette balcony
- Two double bedrooms
- Modern family bathroom
- Walking distance to Wythall railway station



TOTAL FLOOR AREA : 631 sq.ft. (58.6 sq.m.) approx.

Whilst every attempt has been made to ensure the accuracy of the floorplan contained here, measurements of doors, windows, rooms and any other items are approximate and no responsibility is taken for any error, omission or mis-statement. This plan is for illustrative purposes only and should be used as such by any prospective purchaser. The services, systems and appliances shown have not been tested and no guarantee as to their operability or efficiency can be given.
Made with Metropix ©2026