



CLEEVE REACH, GORING-ON-THAMES



CLEEVE REACH



An exceptional Huf Haus with panoramic Thames views, open plan living, sun deck, boathouse, jetty and mooring in a tranquil, exclusive riverside setting.

HUF HAUS is a German family-owned company renowned for bespoke timber-and-glass homes. Built using precision-engineered components, they feature striking glass façades, open-plan living, energy-efficient construction and individual architecture. Peter Huf used to personally visit Cleeve Reach with purchasers to show how spectacular his houses could look.





CLEEVE REACH

THE PROPERTY

Approached via a quarter-mile driveway, this striking riverside home enjoys a secluded setting with an exceptional sense of privacy. Floor-to-ceiling glazing frames panoramic views of the River Thames, flooding the open-plan kitchen, dining and sitting room with natural light and creating a superb space for both everyday living and entertaining. Contemporary architecture is complemented by high-quality finishes, spacious bedrooms and modern bathrooms throughout.

A generous sun deck extends the living space outdoors, providing the perfect spot to enjoy the river outlook. Further highlights include a boathouse, double garage, private jetty, 300ft of river frontage and mooring, offering an outstanding waterside lifestyle in a truly remarkable setting.





CLEEVE REACH





CLEEVE REACH

OUTSIDE

The gardens surround the house and are mainly laid to lawn to the rear. Behind secure gates, a large gravel driveway leads to a double garage and ample parking. An old boathouse offers potential as a studio with renovation. The sun deck enjoys superb river and countryside views.



CLEEVE REACH



LOCATION

Goring-on-Thames is a highly desirable riverside village in the Thames Valley, known for its scenic setting and relaxed lifestyle. The River Thames, countryside and waterside walks offer great outdoor pursuits, while cafés, pubs and shops create a vibrant village feel. Goring station provides direct trains to London, making it



CLEEVE REACH

PROPERTY INFORMATION

Services

All mains connected.

Local Authority

South Oxfordshire

Council Tax

G

EPC

C

Postcode

RG8 0JY

What3Words

///banana.positions.dragon

Viewings

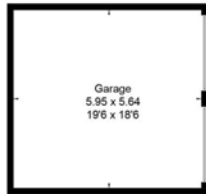
By prior appointment with
Robinson Sherston

Sales Disclaimer

IMPORTANT NOTICE: Nothing in these particulars shall be deemed to be a statement that the property is in good structural condition or that any services, appliances, equipment, or facilities are in good working order. Measurements and distances referred to are given as a guide only whilst descriptions of the property are subjective and are used in good faith as an opinion and not as a statement of fact. Purchasers must satisfy themselves by inspection or otherwise on such matters prior to purchase.



Approximate Floor Area = 265.5 sq m / 2858 sq ft
Outbuilding / Garage = 72.9 sq m / 785 sq ft
Total = 338.4 sq m / 3643 sq ft



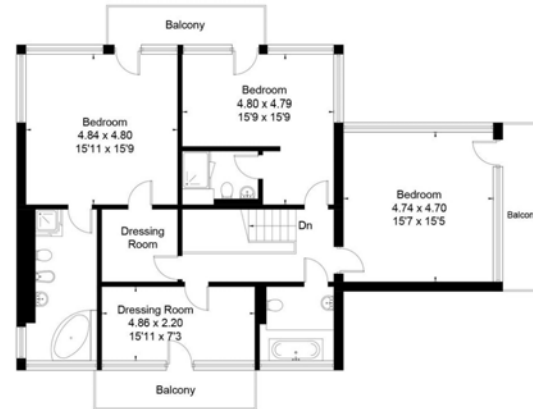
(Not Shown In Actual Location / Orientation)



(Not Shown In Actual Location / Orientation)



Ground Floor



First Floor



This floor plan has been drawn in accordance with RICS Property Measurement 2nd edition.
All measurements, including the floor area, are approximate and for illustrative purposes only. @fourwalls-group.com #109504



01491 411 911

henley@robinsonsherston.co.uk

robinsonsherston.co.uk
