



Commercial

Unit 6
Hill Court
High Street
Paulton
BS39 7QG

Rent £12,000 per annum plus VAT

Ratable Value £8,000 2025/26

Located within the heart of this popular precinct, this lock-up shop unit totaling 70 Sqm, with a first floor storeroom providing direct access to the rear loading bay.

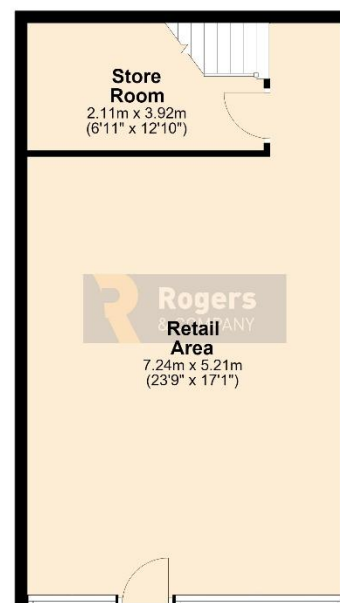
The precinct includes the local Co-op supermarket, café, library and florist. There is customer parking to the front and rear

Available now.

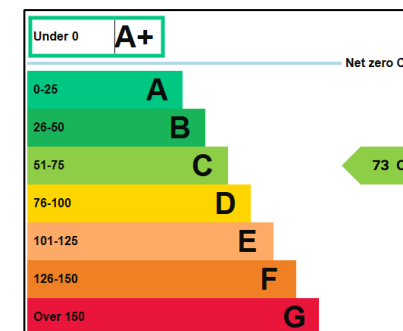
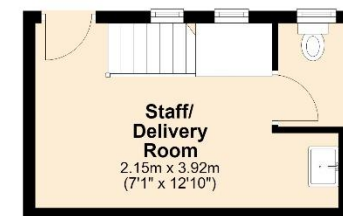
Available by way of a new, fully internally and insuring & repairing lease

Legal fees Due

Ground Floor
Approx. 54.9 sq. metres (591.4 sq. feet)



First Floor
Approx. 15.7 sq. metres (168.6 sq. feet)



Total area: approx. 70.6 sq. metres (760.0 sq. feet)



IMPORTANT: we would like to inform prospective purchasers that these sales particulars have been prepared as a general guide only. A detailed survey has not been carried out, nor the services, appliances and fittings tested. Room sizes should not be relied upon for furnishing purposes and are approximate. If floor plans are included, they are for guidance only and illustration purposes only and may not be to scale. If there are any important matters likely to affect your decision to buy, please contact us before viewing the property.

24 Bath Street, Frome, Somerset, BA11 1DJ

T 01373 454 335

E info@rogersandcompany.co.uk
rogersandcompany.co.uk

