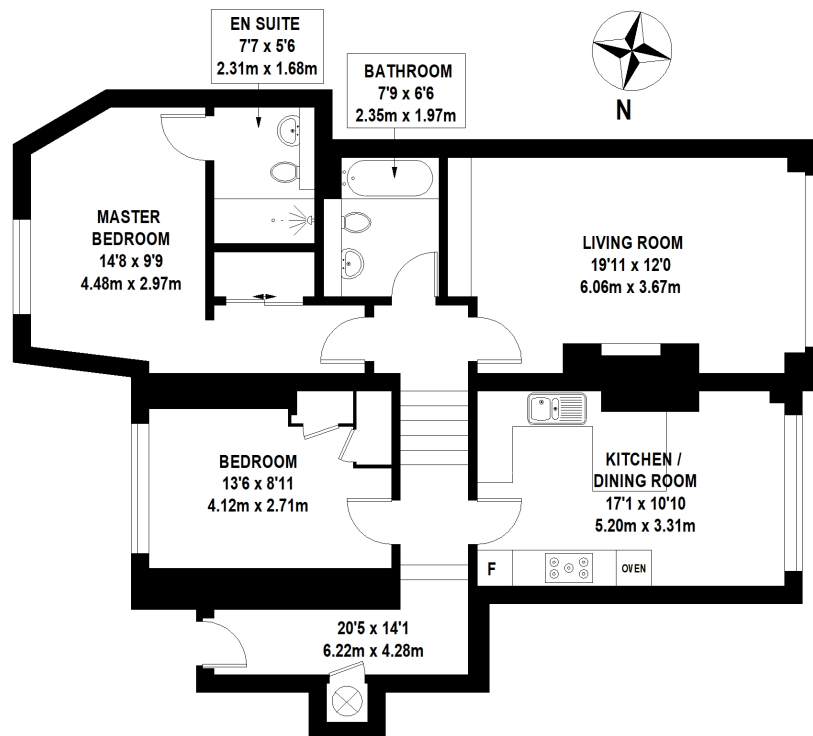




WHITEHALL, SW1A

£4,500 pcm

Take a look at this stunning, fully furnished modern two bedroom / two bathroom property located just a few minutes walk from Charing Cross station. Tastefully finished throughout, with an abundance of space on offer- what more could you ask for?|||The lucky new tenants of this stylish property can enjoy the roof terrace, ideal for sunny days with a glass of wine in



TOTAL APPROX. FLOOR AREA 1036 SQ.FT. (96.26 SQ.M)

Whilst every attempt has been made to ensure the accuracy of the floor plan contained here, measurements of door, windows, rooms and any other items are approximate and no responsibility is taken for any error, omission, or mis-statement. This plan is for illustrative purposes only and should be used as such by any prospective purchaser. The services, systems and appliances shown have not been tested and no guarantee as to their operability or efficiency can be given

© 2019 (ID572178)

LiFE RESIDENTIAL

11 Flagstaff House, London,
SW8 2LZ

Sales: 020 7476 1408

Lettings: 020 7582 7989

Energy Rating: C. We aim to make our particulars both accurate and reliable. However they are not guaranteed; nor do they form part of an offer or contract. If you require clarification on any points then please contact us, especially if you're traveling some distance to view. Please note that appliances and heating systems have not been tested and therefore no warranties can be given as to their good working order.