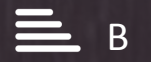
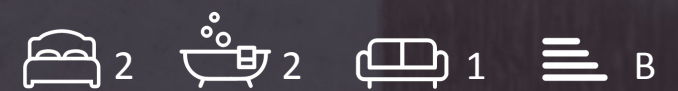




Milford House, 190 Strand, WC2R 1DT

£1,850 Per Week





£1,850 Per Week

Milford House

190 Strand, WC2R 1DT

- Duplex apartment
- 1,163 sq ft (108 sqm)
- State of the art gym
- Golf simulator
- Secure parking space
- Private residents' Cinema
- Swimming pool/spa
- 24 hour concierge service

This luxurious and spacious two bedroom duplex apartment of 1,163 sq ft (108 sqm), situated in a quiet position within the premium 190 Strand development and close to the banks of the River Thames and Covent Garden, is available for lease through Prime London.

The property also benefits from a secure parking space.

This fully furnished property benefits from being arranged over two floors, adding to the sense of space. On the first floor you will find a large open-plan reception room with dining area, a smart kitchen with Miele integrated appliances.

Though the hall and up the stairs you will find two substantial double bedrooms, one with dressing area and private balcony, and both with their own luxury bathroom suites. The property also benefits from comfort cooling, solid parquet wood flooring, two Juliette style balconies, and a laundry closet.

This luxurious residence offers an array of top-tier amenities, including a concierge service, gym, sauna, golf simulator, and swimming pool.

190 Strand is just a short stroll from the iconic Covent Garden Piazza, providing access to a vibrant selection of shops, restaurants, bars, and theatres.

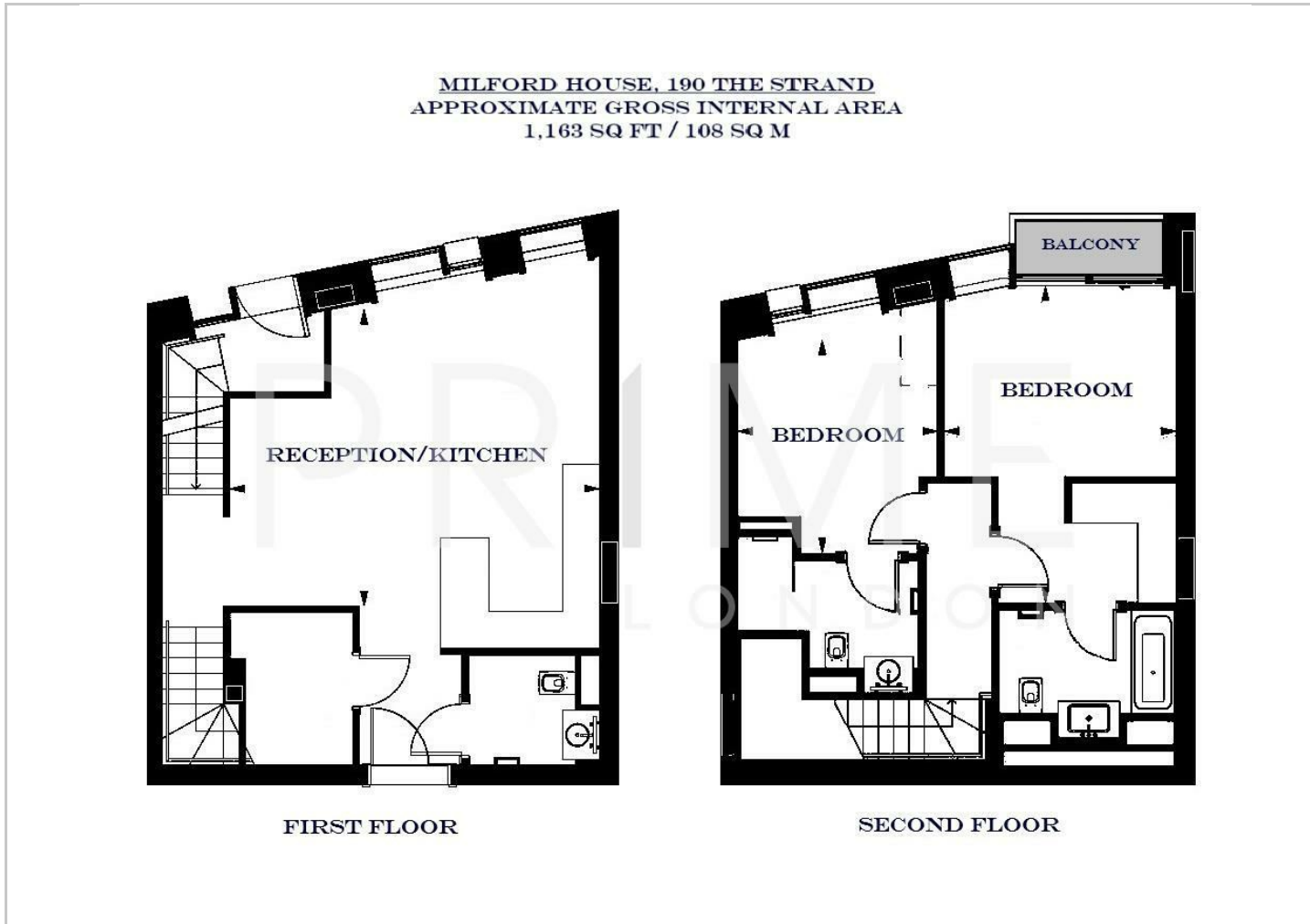
The location is exceptionally well-connected, with Temple Station (Circle & District lines) just 0.1 miles away, and Covent Garden Station (Piccadilly Line) only 0.5 miles from the development.



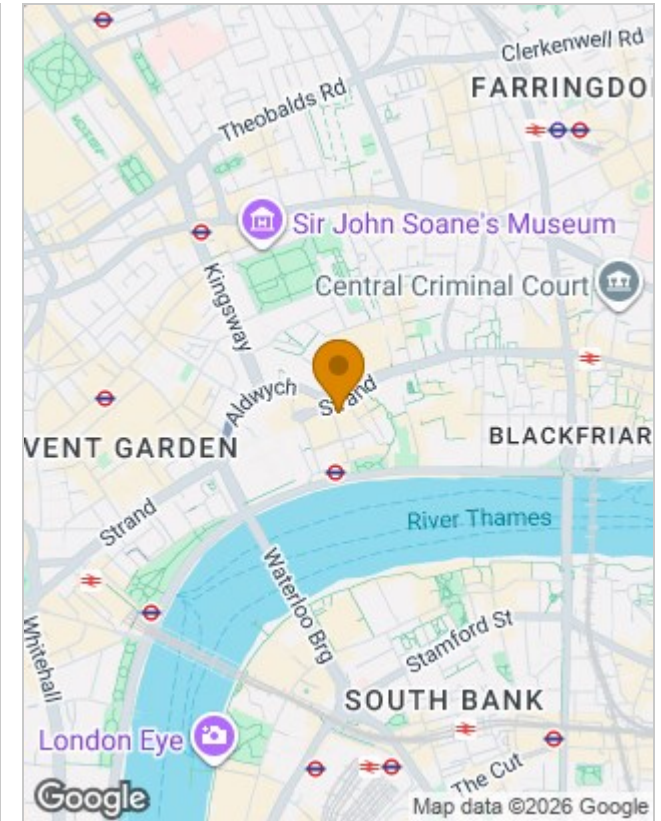




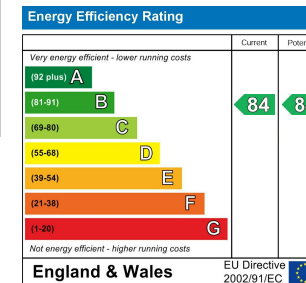
Floor Plans



Location Map



Energy Performance Graph



Viewing

By appointment. Contact us if you wish to arrange a viewing appointment for this property, or require further information.

The particulars are set out as a general outline only for the guidance of intended purchasers or lessees, and do not constitute, any part of a contract. Nothing in these particulars shall be deemed to be a statement that the property is in good structural condition or otherwise nor that any of the services, appliances, equipment or facilities are in good working order. Purchasers should satisfy themselves of this prior to purchasing.