



Elms Crescent, SW4

£500,000

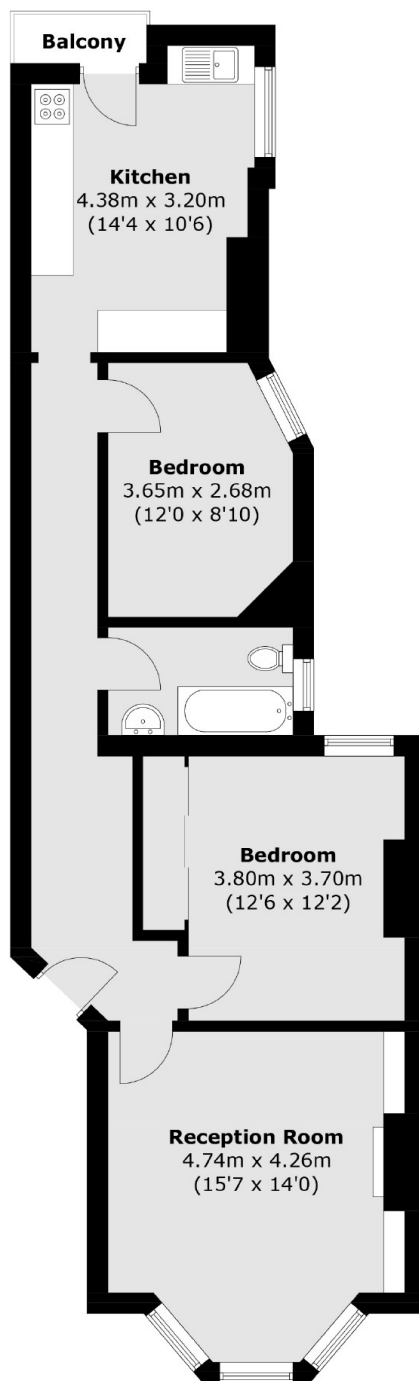
This first-floor mansion apartment extends to an impressive 781 sq and has high ceilings throughout, providing an abundance of bright and airy living and entertaining space. Comprising a spacious reception room with a bay window and a feature fireplace, a separate, well equipped kitchen/breakfast room with an adjoining balcony, two double bedrooms, and a bathroom. The property also has off-street parking (available with a permit) and is offered to the market with no onward chain.

Elms Crescent is a desirable tree-lined street located within the Abbeville Village, an area renowned for its many local shops, bars and restaurants. Clapham Common and Clapham South stations (Northern Line) are nearby.

Features

- Mansion Apartment
- Reception Room
- Kitchen/Breakfast Room
- Two Double Bedrooms
- Balcony
- Chain Free

Elms Crescent, London, SW4



First Floor

Total area (approx.): 72.6 sq. m (781.4 sq. ft)
Balcony area : 1.3 sq. m (14.0 sq. ft)