

WITHDRAWN



Cherry Building, Addenbrookes Road

2 Bedrooms, 2 Bathroom, Apartment

£1,550 pcm



Cherry Building, Addenbrookes Road

Apartment,
2 bedroom, 2 bathroom

£1,550 pcm

Date available: 5th October 2023

Deposit: £1,785

Unfurnished

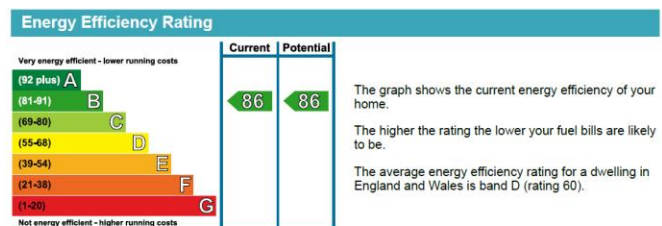
Council Tax band: C

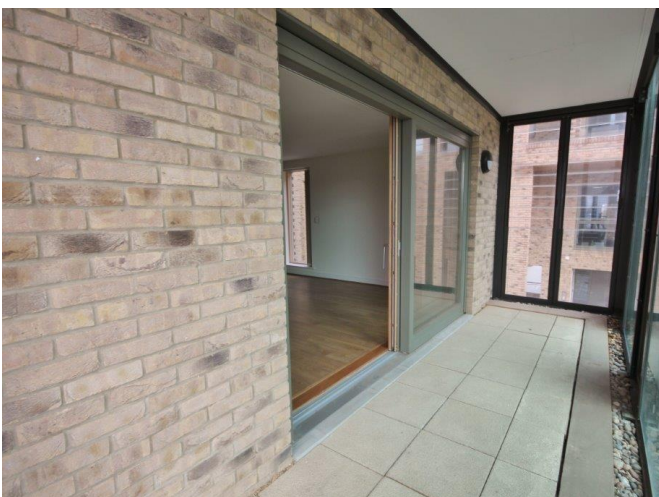
- Excellent Modern Apartment
- Two Double Bedrooms
- First Floor With Balcony
- Two Luxury Bathrooms
- Open Plan Kitchen / Reception
- Unfurnished
- Allocated Car Port

A splendid apartment within the modern block "The Cherry Building", part of the revered Abode development, which is offered in excellent condition and is excellently located giving quick and easy access to Addenbrooke's, the city centre and the M11.

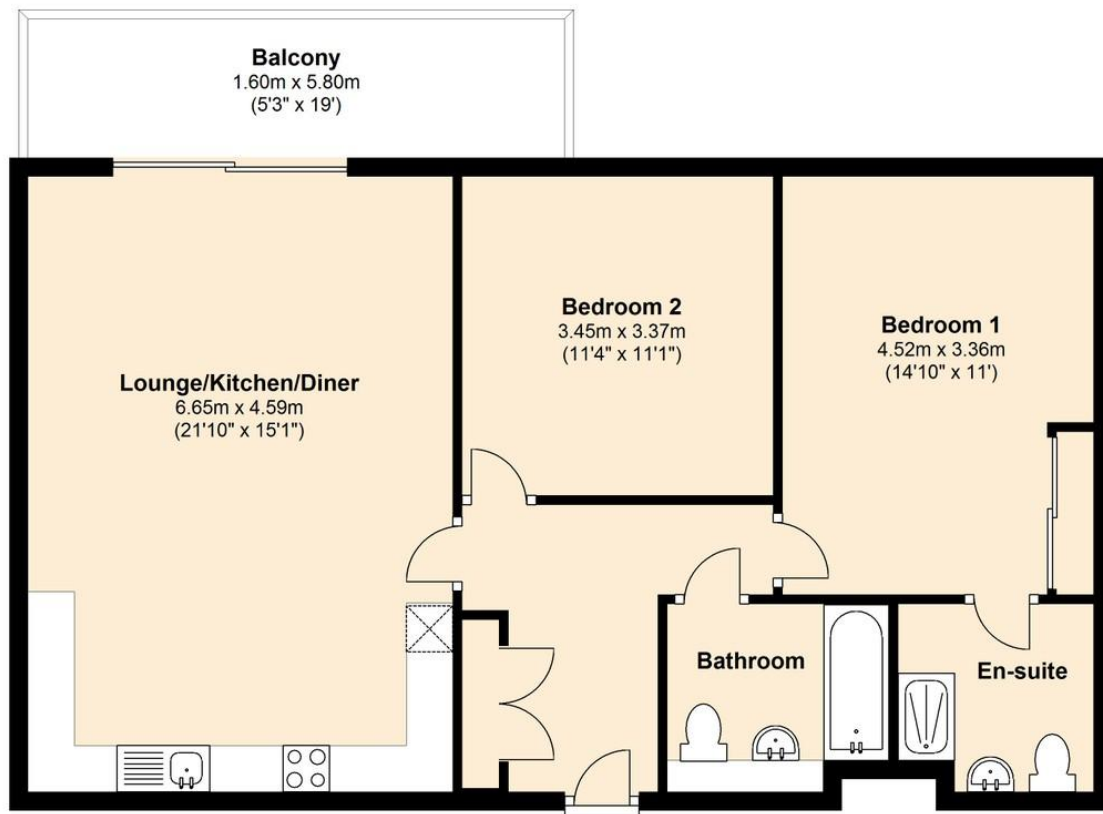
Arranged on the first floor, the property briefly comprises entrance hall with storage, large reception room with a range of integrated appliances, two double bedrooms including principle suite with en-suite shower room and a modern three piece family bathroom with additional benefits including a spacious enclosed balcony, double glazed windows throughout and an allocated car port.

Unfurnished.





First Floor



Martin & Co Cambridge

191 Mill Road • • Cambridge • CB1 3AN

T: 01223 275150 • E: cambridge@martinco.com

01223 275150

<http://www.martinco.com>



Accuracy: References to the Tenure of a Property are based on information supplied by the Seller. The Agent has not had sight of the title documents. A Buyer is advised to obtain verification from their Solicitor. Items shown in photographs including but not limited to carpets, fixtures and fittings are not included unless specifically mentioned within the sales particulars. They may however be available by separate negotiation. Buyers must check the availability of any property and make an appointment to view before embarking on any journey to see a property. No person in the employment of the agent has any authority to make any representation about the property, and accordingly any information given is entirely without responsibility on the part of the agents, sellers(s) or lessors(s). Any property particulars are not an offer or contract, nor for part of one. **Sonic / laser Tape:** Measurements taken using a sonic / laser tape measure may be subject to a small margin of error. **All Measurements:** All Measurements are Approximate. **Services Not tested:** The Agent has not tested any apparatus, equipment, fixtures and fittings or services and so cannot verify that they are in working order or fit for the purpose. A Buyer is advised to obtain verification from their Solicitor or Surveyor.