



Grange Road, London, W4 4DA

Guide Price £425,000

WHITMAN & CO.

SALES · LETTINGS · COMMERCIAL

- Exceptionally spacious and light, top-floor apartment
- Fabulous 20'10x16'10 reception room
- Close to numerous amenities
- Period conversion flat in imposing building
- Quiet tree-lined street
- No onward chain

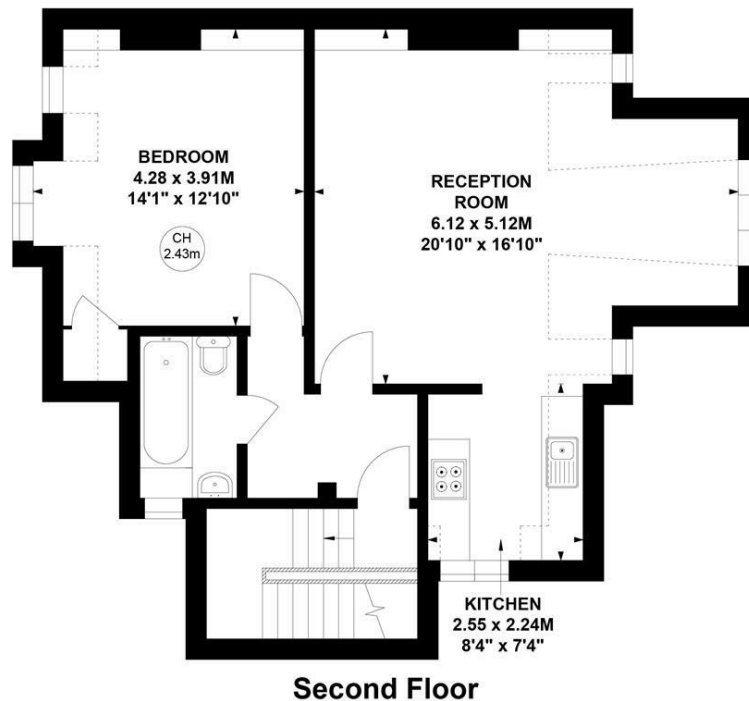
Tenure - Leasehold
 Lease length - 100 Years remaining
 Ground Rent - £100 pa
 Service Charge - £400 pa
 Local authority - Hounslow
 Council tax - Band D

THE PROPERTY

An exceptionally spacious and light, top-floor apartment set within this imposing period property, a stone's throw from Gunnersbury Station and a few minutes' walk to The River and Chiswick High Road's extensive facilities. The flat totals close to 650sqft with the accommodation comprising a fabulous 20'10x16'10 reception room with a fitted kitchen area and lovely feature window, a large double bedroom with far-reaching views over the surrounding area, a bathroom and an entrance hall. The property is in great condition and includes high-quality new casement windows. The flat is in an excellent location a couple of minutes walk from Gunnersbury station and within a short walk of local parks and the extensive shopping, cafe and restaurant facilities on Chiswick High Road. The A4/M4 offers easy access into central London and out to The West/Heathrow. No onward chain.

Grange Road, W4

Approximate Gross Internal Area
 58.57 sq m / 630 sq ft
 (Excluding Communal Space)



Key :
 CH - Ceiling Height

Not to scale, for guidance only and must not be relied upon as a statement of fact.
 All measurements and areas are approximate only

SITUATION



5-7 Turnham Green Terrace, Chiswick, London, W4 1RG

Tel 020 8747 8800

E-mail sales@whitmanandco.com

Website www.whitmanandco.com



MISREPRESENTATION ACT 1967

Whitman & Co. for themselves and for the vendors give notice that these particulars do not constitute any part of, an offer of contract. All statements contained in these particulars are made without responsibility on the part of Whitman & Co. or the vendor. None of the statements contained in these particulars is to be relied upon as statements or representations of facts. Any intending purchaser must satisfy himself by inspection or otherwise as to the correctness of each of the statements contained in these particulars. The vendor does not make or give, and neither Whitman & Co. or any person in their employment has any authority to make or give, any representation or warranty whatever in relation to the property.