



Enfields Hythe
3 Marsh Parade,
Hythe, Southampton
Hampshire, SO45 6AN
023 9084 9210
sales-hythe@enfields.co.uk

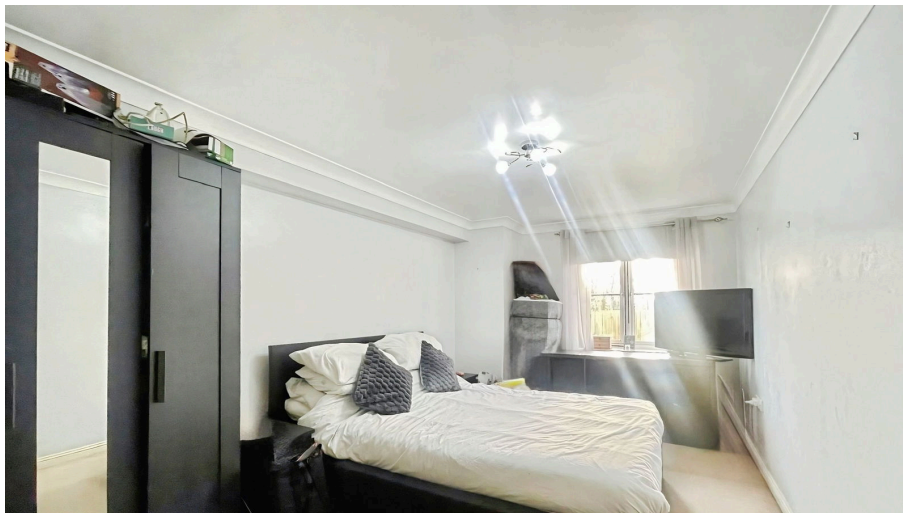
22, Seaweed Close,
£190,000

3 2 1



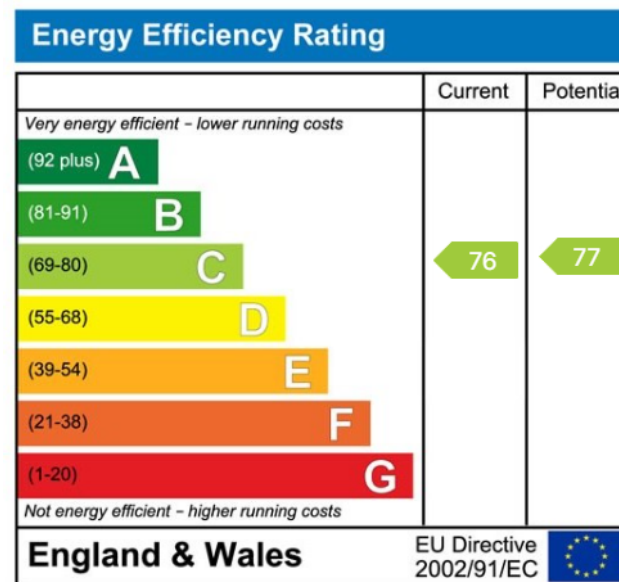
- Three-bedrooms
- Ground-floor apartment
- Separate kitchen with potential to modernise
- Additional family bathroom
- Quiet cul-de-sac location
- Two-bathrooms
- Spacious and airy open-plan living area
- Main bedroom with en-suite
- French doors opening directly onto communal garden
- Close to parks, woodlands, schools and local shops





Guide Price: £190,000

A spacious three-bedroom, two-bathroom ground-floor apartment offering bright open-plan living and direct access to communal garden. Set within a quiet cul-de-sac, the property benefits from allocated parking and excellent access to local amenities and green spaces.



www.enfields-southampton.co.uk

It is Enfields policy to respect any sole agency currently in force and we would not be able to commence marketing until this has expired or been terminated. If you fail to terminate any previous agreement you could be liable for two sets of fees. Enfields Hythe is a trading name of YTF LTD Registered office: 345 Shirley Road, Southampton, Hampshire, England, SO15 3JD. Company Registration No: 10459987. VAT Registration No: 281 2975 81.

Enfields Lettings - Embley Management LTD T/A Enfields. Registered Address: 345 Shirley Road, Southampton, Hampshire, England, SO15 3JD. Company Registration No: 14847604. VAT Registration No: 439 8546 45.

