

The Floorplan...



0203 866 6640
brian-cox.co.uk



More Details From...

Call: Brian Cox North Harrow: 020 3866 6640
Email: nhadmin@brian-cox.co.uk
Web: www.brian-cox.co.uk



New to the market, this impressive, spacious, one bedroom, executive apartment is located in the superb newly built Eastman Village, Barratt Homes development in Harrow. The apartment itself benefits from a large open plan living area with balcony, stylish fully fitted kitchen, one double bedroom, one luxury bathroom, a large hall storage / utility cupboard, secure video phone entry and contemporary design throughout. Eastman Village is located within a 10 minute walk of Harrow & Wealdstone overground / tube station and is just a short drive from both St George's & St Anne's shopping centres.



£315,000
Leasehold

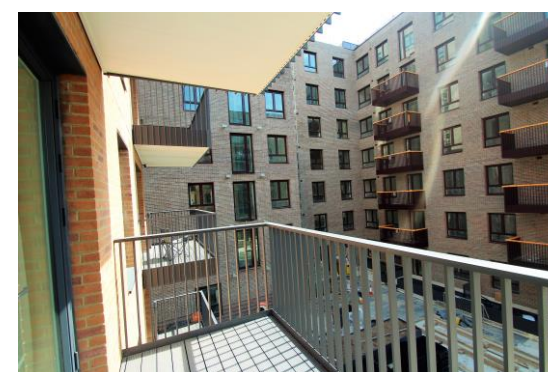
Taro Apartments, Eastman Village, HA1 4TY

Consumer Protection from Unfair Trading Regulations 2008 We have not tested any apparatus, equipment, fixtures, fittings or services and so cannot verify that they are in working order or fit for purpose. You are advised to obtain verification from your solicitor or surveyor. References to the tenure of a property are based on information supplied by the seller. We have not had sight of the title documents and a buyer is advised to obtain verification from their solicitor. Items shown in photographs are not included unless specifically mentioned within the sales particulars, but may be available by separate negotiation. We advise you to book an appointment to view before embarking on any journey to see a property, and check its availability.



In Brief...

- One Bedroom Flat
- Sought After Development
- Fully Fitted Kitchen
- Balcony
- Well Presented
- Lift to all Floors



The Location...

Nearest Stations ...

Headstone Lane Station 0.4 miles
Harrow & Wealdstone Station 0.8 miles
North Harrow Station 1.0 miles

Harrow is a suburban area of North West London, situated north-west of central Harrow within the London Borough of Harrow. North Harrow train station is a London Underground station situated in North Harrow in North West London. The station is on the Metropolitan line between Harrow-on-the-Hill (southbound) and Pinner (northbound). You also have the Harrow Town Centre which is not too far from the property. The town centre is served well by local amenities including a shopping centre, post office, Tesco Express, a selection of restaurants, take-aways and independent specialist shops. There are also several schools in the area and churches.

