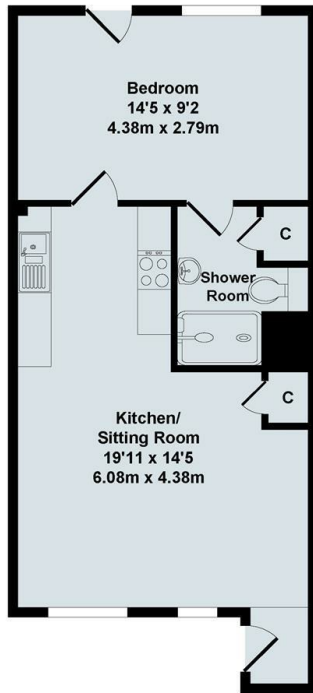




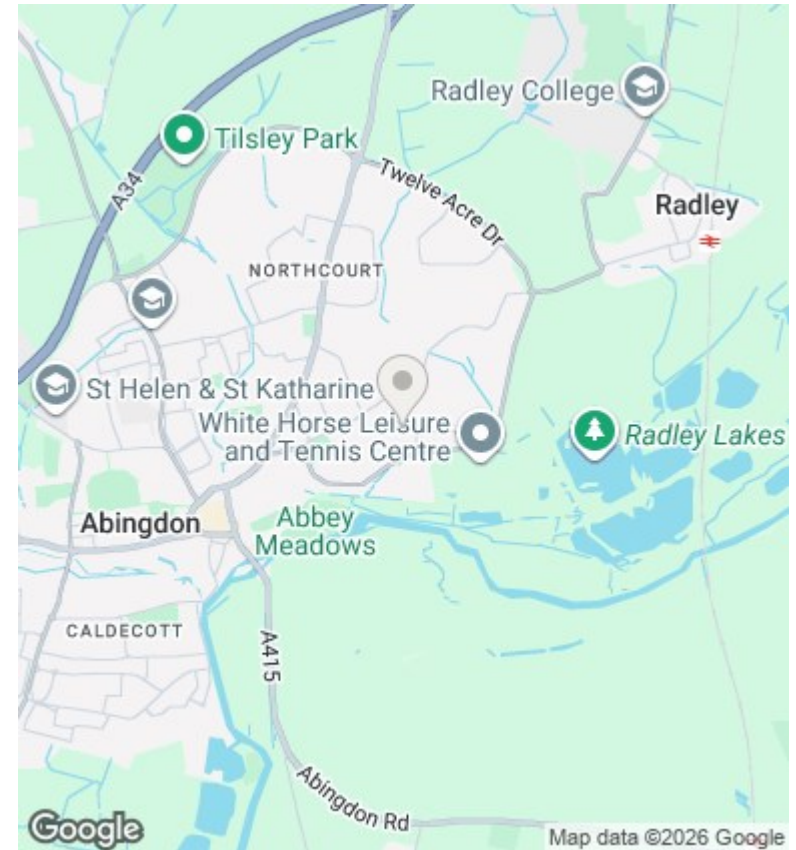
15 Reade Avenue, Abingdon, Oxon, OX14 3YE

£1,100 PCM - 8th September 2026.

- Ground floor maisonette
- Walking distance to town and leisure centre
- 433 Sq ft
- Private Garden
- Council Tax Band B
- Allocated parking space
- EPC Band D



Total Approx. Floor Area 433 Sq.Ft. (40.20 Sq.M.)
 All items illustrated on this plan are included in the "Total Approx Floor Area"



Directions

Viewings

Viewings by arrangement only. Call 01235 554950 to make an appointment.

Council Tax Band

B

EPC Rating:

Energy Efficiency Rating		
	Current	Potential
<i>Very energy efficient - lower running costs</i>		
(92 plus) A		
(81-91) B		
(69-80) C		
(55-68) D		
(39-54) E		
(21-38) F		
(1-20) G		
<i>Not energy efficient - higher running costs</i>		
England & Wales	EU Directive 2002/91/EC	