



SAMUEL WOOD



, 11 New Park Road

Shrewsbury, Shropshire, SY1 2RS

£930 Per Month



MANAGED BY SAMUEL WOOD Modern two-bedroom terraced home close to Shrewsbury town centre, with lounge, kitchen, cloakroom, enclosed rear garden and allocated parking.



CONTEMPORARY AGENCY • TRADITIONAL VALUES

propertymark

MAYFAIR
OFFICE.CO.UK

rightmove

OnTheMarket.com



A well-presented two-bedroom terraced house situated at 11 New Park Road, Shrewsbury, in a convenient location close to the town centre and within easy reach of local amenities. The property is offered unfurnished and provides practical accommodation suited to professional tenants, a couple or a small family.

Internally, the accommodation comprises an entrance hall, lounge, kitchen and a downstairs cloakroom with WC. To the first floor there are two bedrooms and a bathroom. The property also benefits from double glazing.

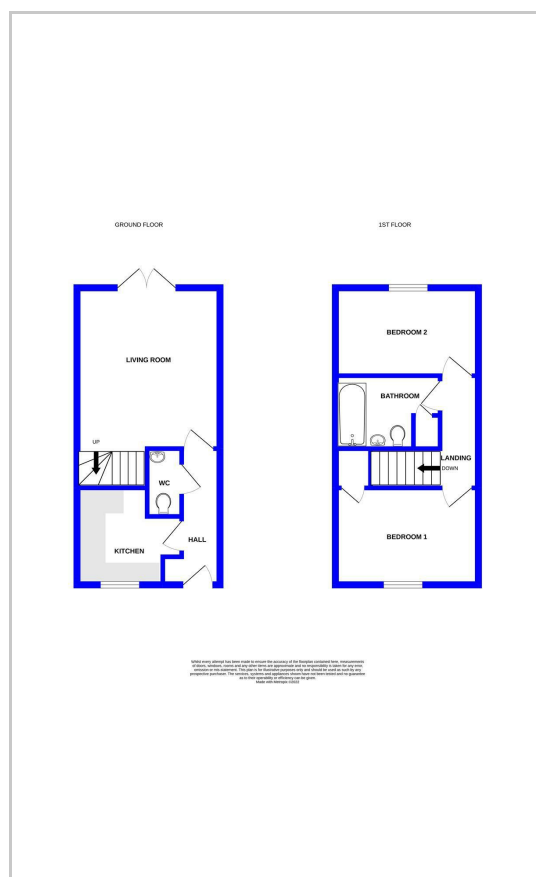
Externally, the property has an enclosed rear garden, providing useful outside space, together with allocated car parking.

New Park Road is conveniently positioned for access into Shrewsbury town centre, with its range of shops, cafés, restaurants, leisure facilities and local services. The area also offers access to local amenities and transport links, making it a practical location for tenants looking to be close to the town while still benefitting from a residential setting.

Area Map



Floor Plans



We take every care in preparing our sales details. They are checked and usually verified by the Vendor. We do not guarantee appliances, alarms, electrical fittings, plumbing, showers etc. You must satisfy yourself that they operate correctly. Room sizes are approximate; they are usually taken in metric and converted to imperial. Do not use them to buy carpets or furniture. We cannot verify the tenure, as we do not have access to the legal title; we cannot guarantee boundaries or rights of way so you must take the advice of your legal representative. No person in the employment of or representing Samuel Wood has any authority to make any representation or warranty whatever in relation to this property. If there is any point which is of particular importance to you, please contact the office and we will be pleased to check the information. Do so particularly if contemplating travelling some distance to view. Applicants are advised that the majority of our shots are taken with a wide angle lens.

2 Shoplatch, Shrewsbury, Shropshire, SY1 1HF
Tel: 01743 272710 | shrewsbury@samuelwood.co.uk

www.samuelwood.co.uk