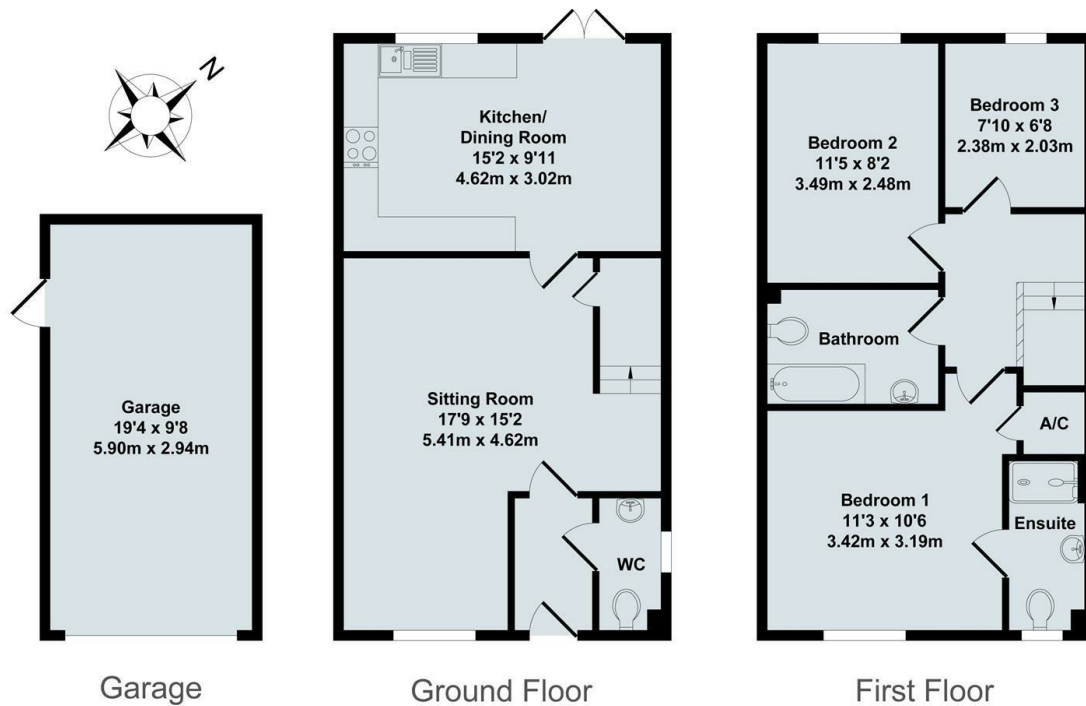




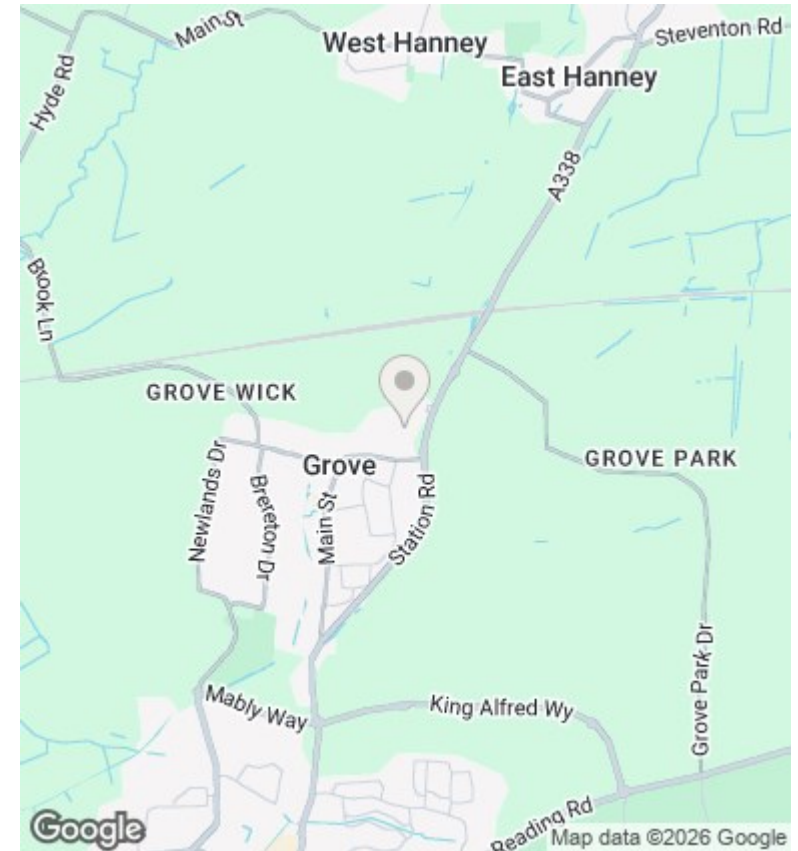
2 Rooks End, Grove, Oxon, OX12 7FD

£1,850 PCM - 14th August 2026.

- Immaculately presented, 3 bedroom, semi detached house
- Gas central heating
- Within easy distance of Wantage town centre, Milton Park and Harwell campus
- EPC Rating B. Council tax Band C
- Enclosed, west facing garden and door to single garage.



Total Approx. Floor Area 1035 Sq.Ft. (96.20 Sq.M.)
All items illustrated on this plan are included in the "Total Approx Floor Area"



Directions

Viewings

Viewings by arrangement only. Call 01235 773999 to make an appointment.

Council Tax Band

C

EPC Rating:

B

Energy Efficiency Rating		
	Current	Potential
Very energy efficient - lower running costs		
(92 plus) A		
(81-91) B	84	
(69-80) C		
(55-68) D		
(39-54) E		
(21-38) F		
(1-20) G		
Not energy efficient - higher running costs		
England & Wales	EU Directive 2002/91/EC	