

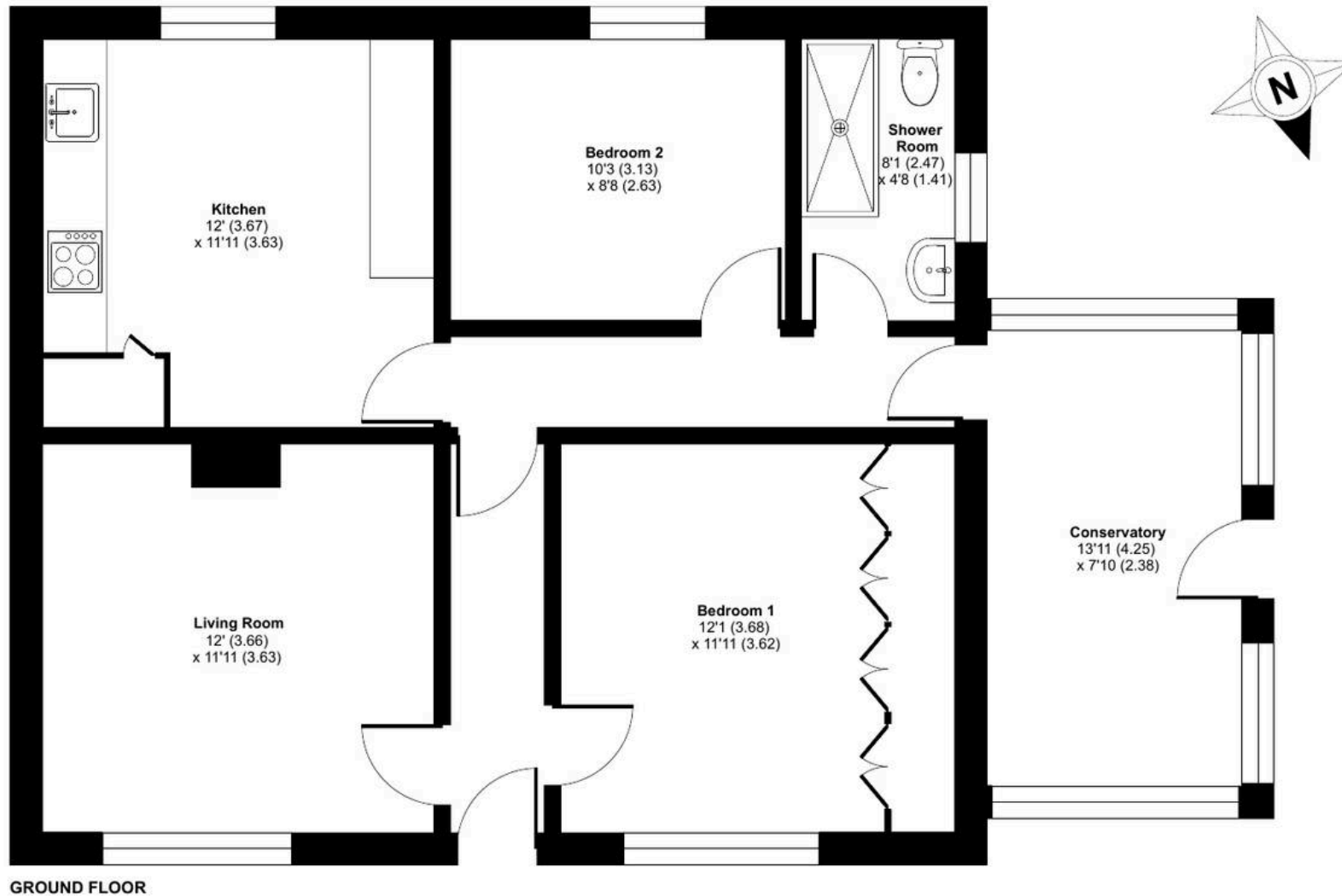


**Ormond Cottage, Rhodes Minnis - CT4 6YA**  
**£575,000**

# Ormond Cottage, Rhodes Minnis, Canterbury, CT4

Approximate Area = 802 sq ft / 74.5 sq m

For identification only - Not to scale



GROUND FLOOR





## Ormond Cottage

Rhodes Minnis, Canterbury

A charming two bedroom cottage situated in the small village of Rhodes Minnis, set on approximately 1.8 of an acre. The property offers great potential, now in need of updating, with scope to extend or redevelop subject to planning permission. Attractive gardens to the front, rear, and a larger area to the right-hand side. There are various outbuildings, a detached double garage and driveway parking. No chain.

Council Tax band: C

Tenure: Freehold

EPC Energy Efficiency Rating: G

EPC Environmental Impact Rating:



## Laing Bennett

Laing Bennett Ltd, The Estate Office, 8 Station Road – CT18 8HP

01303 863393

[info@laingbennett.co.uk](mailto:info@laingbennett.co.uk)

[www.laingbennett.co.uk/](http://www.laingbennett.co.uk/)

DISCLAIMER – These details are for guidance only and do not form part of an offer or contract. Measurements are approximate. Laing Bennett Ltd and the Vendor/Landlord accept no liability. Services and appliances are untested. Applicants must make their own checks. Items shown may not be included. No staff have authority to give warranties.