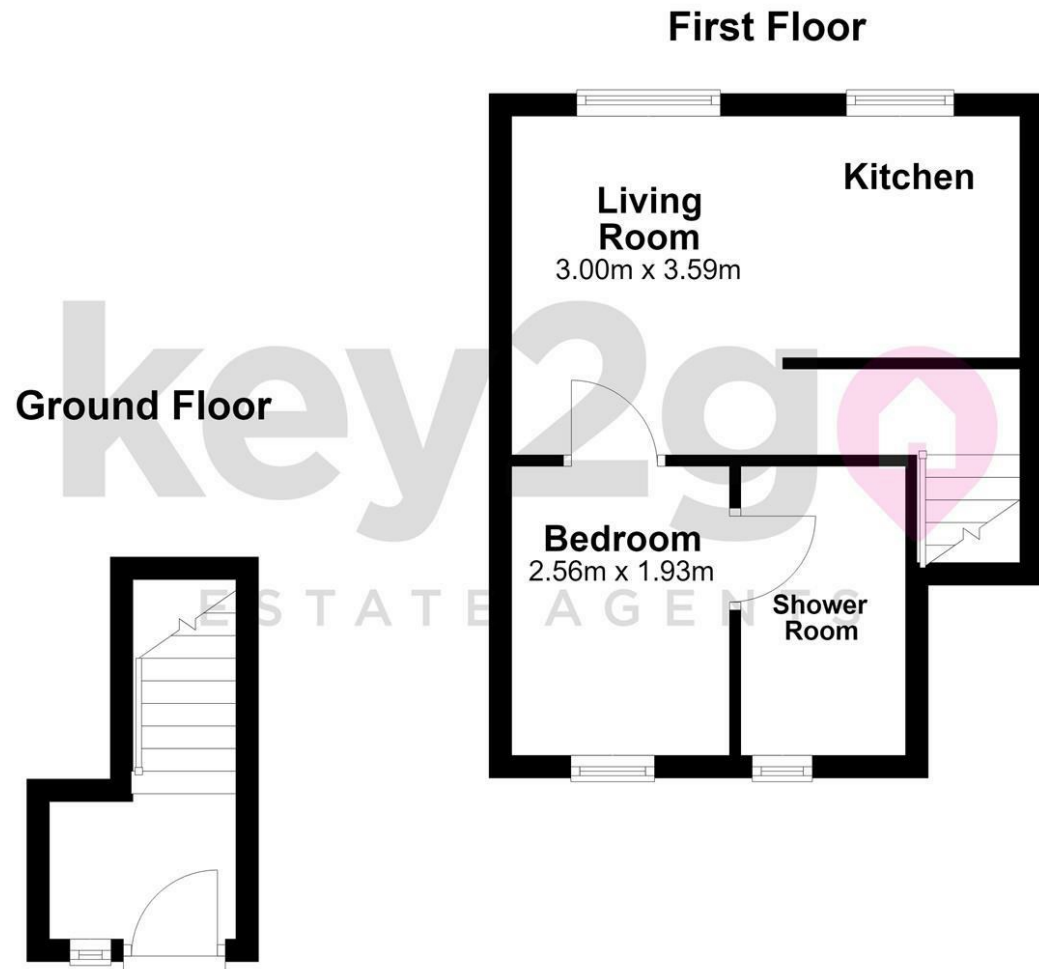
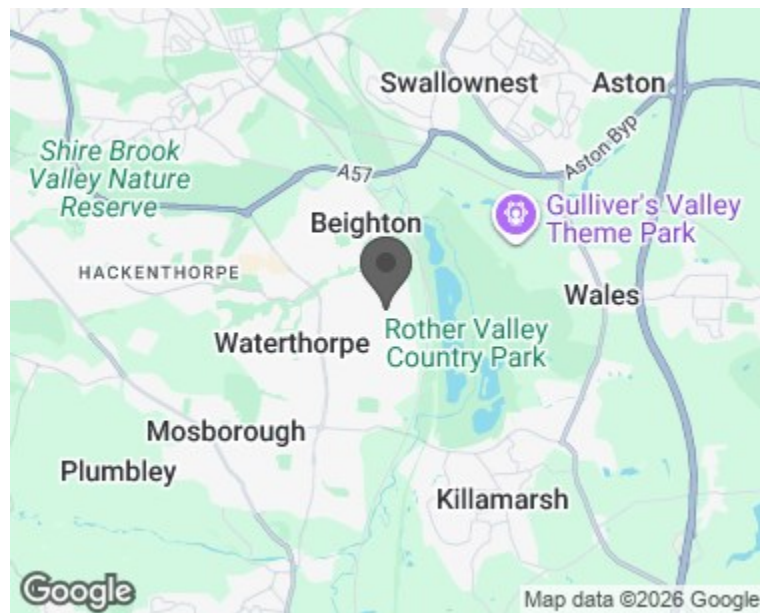


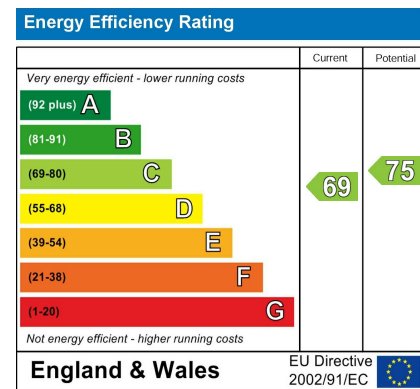
Floorplan



Area Map



Energy Efficiency Graph



Viewing

Please contact our Lettings Team Office on 0114 2478819 if you wish to arrange a viewing appointment for this property or require further information.

These particulars, whilst believed to be accurate are set out as a general outline only for guidance and do not constitute any part of an offer or contract. Intending purchasers should not rely on them as statements of representation of fact, but must satisfy themselves by inspection or otherwise as to their accuracy. No person in this firm's employment has the authority to make or give any representation or warranty in respect of the property.



51 Ringwood Road
Sothall, Sheffield, S20 2DG

£595 PCM



51 Ringwood Road

Sothall, Sheffield, S20 2DG

£595 PCM



A beautifully presented first-floor one-bedroom apartment, newly renovated by the current owner to an exceptional standard. Offering its own private entrance, this stylish property features a stunning modern kitchen, a contemporary en-suite shower room, and the added benefit of allocated parking.

Located in a sought-after area, this impressive apartment provides a fantastic opportunity for a professional individual or couple seeking a high-quality home in a desirable location.

SUMMARY

A beautifully presented first-floor one-bedroom apartment, newly renovated by the current owner to an exceptional standard. Offering its own private entrance, this stylish property features a stunning modern kitchen, a contemporary en-suite shower room, and the added benefit of allocated parking.

Located in a sought-after area, this impressive apartment provides a fantastic opportunity for a professional individual or couple seeking a high-quality home in a desirable location.

