



**WHITEHORNES**

Buy. Sell. Let. Relax!

0114 268 8533  
info@whitehorns.com  
www.whitehorns.com



**329 Handsworth Road, Handsworth**

Sheffield

Guide Price **£125,000**



# 329 Handsworth Road

Handsworth, Sheffield

Available to the market with the huge benefit of no onward chain, this lovely two bedroomed mid-terraced house, located in the heart of Handsworth. Briefly consisting of a front living room, open kitchen/dining room, two bedrooms and a family bathroom, to the outside is a superb, enclosed rear garden with a fantastic patio area. This leasehold property is perfect for investors looking to expand their portfolio. Situated close by to numerous local amenities and schools including St Joseph's Roman Catholic Primary School. It is easy to say that viewing is essential to do full justice to this superb property. VALUER – BEN WHITEHORNE  
Council Tax band: A

Tenure: Leasehold

- TWO BEDROOMED MID TERRACED HOUSE
- GOOD LOCAL AMENITIES
- LOVELY LOW MAINTENCE PRIVATE REAR GARDEN
- VIEWING ESSENTIAL TO DO FULL JUSTICE
- CLOSE BY TO LOCAL REPUTABLE SCHOOLS
- LEASEHOLD PROPERTY AND COUNCIL TAX BAND A
- THE PERFECT PROPERTY FOR INVESTORS LOOKING TO EXPAND THEIR PORTFOLIO
- SUPERB BRIGHT AND SPACIOUS KITCHEN
- AMPLE ON ROAD PARKING
- AVAILABLE WITH NO ONWARD CHAIN







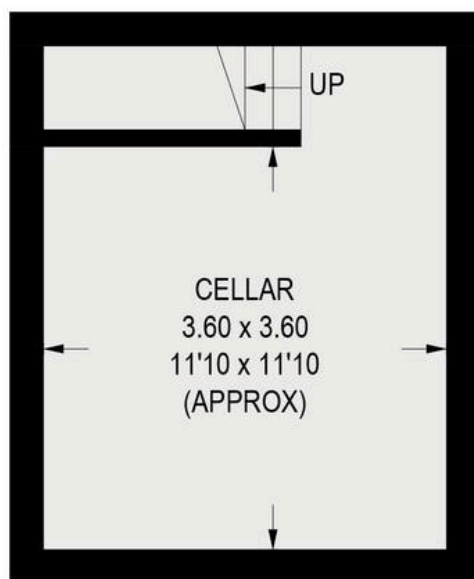


## 329 HANDSWORTH ROAD

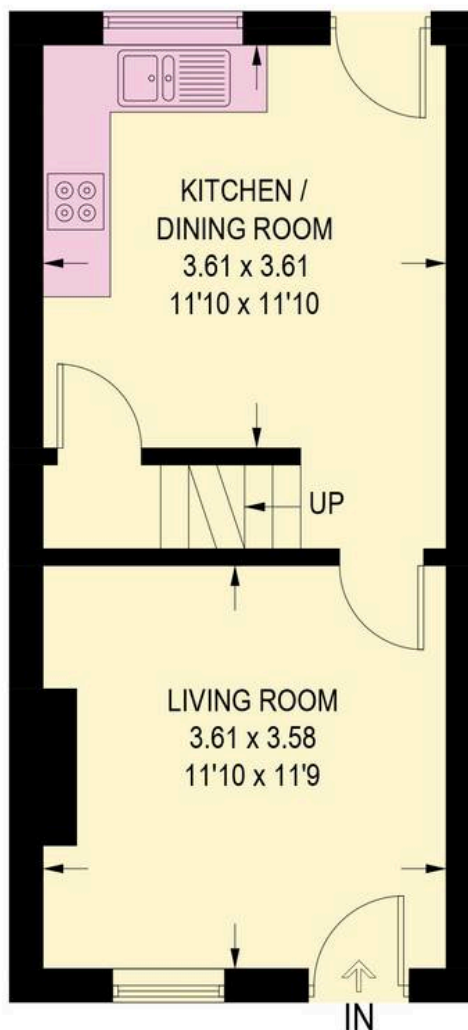
APPROXIMATE GROSS INTERNAL AREA = 59.7 SQ M / 643 SQ FT

CELLAR = 16.2 SQ M / 174 SQ FT

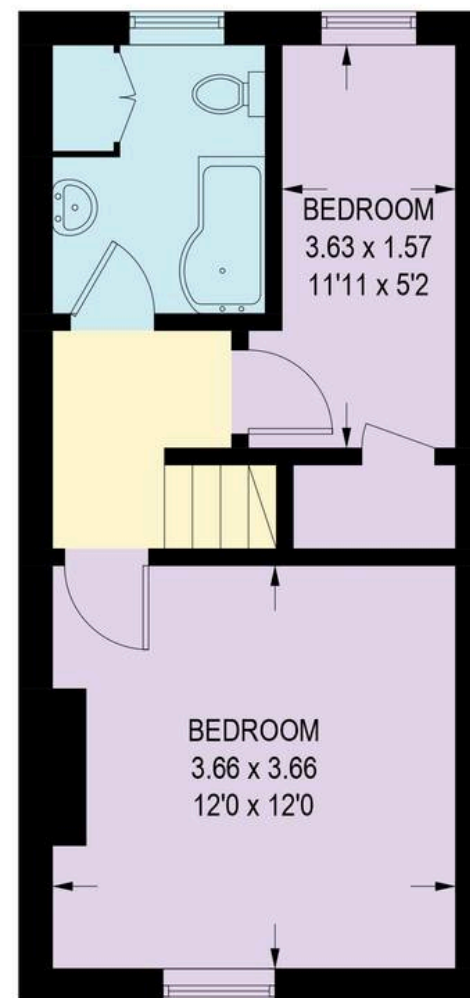
TOTAL = 75.9 SQ M / 817 SQ FT



**CELLAR**  
16.2 SQ M / 174 SQ FT



**GROUND FLOOR**  
30.0 SQ M / 323 SQ FT



**FIRST FLOOR**  
29.7 SQ M / 320 SQ FT

Illustration is for identification purposes only,  
measurements are approximate, not to scale.

© JOLIF 2023