



## Green Street, TW16

£750,000

A stunning three/four bedroom modern home set in the heart of Lower Sunbury with a private rear garden and two allocated parking spaces. This beautiful family home offers just under 1,600 sq.ft of flexible accommodation spread over three floors.

Quiberon Court is an exclusive development of only six houses, built by Antler Homes in 2006, in a prime location just off Green Street. Sunbury Park, the River Thames, riverside pubs and an outstanding secondary school are all close by. Sunbury Station which offers a direct service into Waterloo is just over half a mile away.

### Features

- Three/Four Bedrooms
- Two Bathrooms
- Stunning Kitchen Diner
- Approximately 1600 Sq Ft
- Two Parking Spaces
- Landscaped Rear Garden



## Green Street, TW16

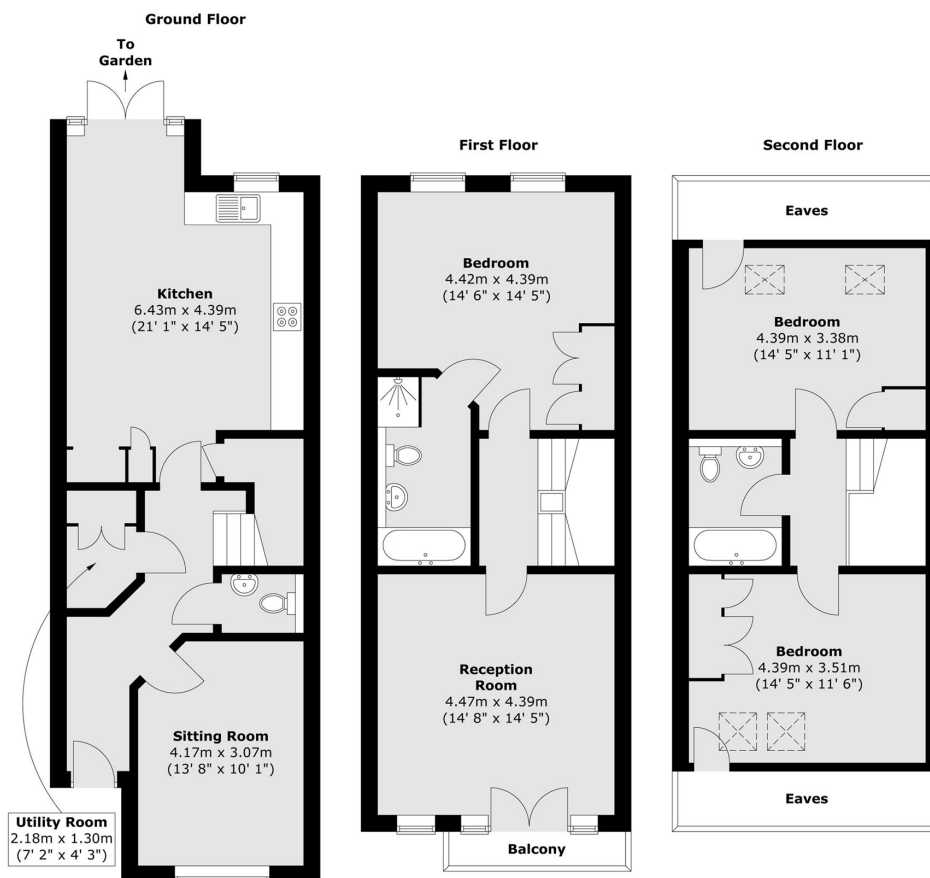
On the ground floor there is a welcoming entrance hallway, a front reception room and a amazing kitchen and dining room which is perfect for entertaining and leads directly on to the garden.

On the first floor there is the main bedroom with built in wardrobes and an en suite bathroom with separate walk in shower. There is also a light and spacious second reception room with a balcony, this room could also be used as a fourth bedroom.

To the front there are two allocated parking spaces and a visitors parking space. To the rear there is a landscaped garden with two patio areas and a lawn.



# Green Street, Sunbury-On-Thames, TW16



Total area (approx.) : 148.4 sq. m (1597 sq. ft)  
(Excluding eaves)  
Total balcony area (approx.) : 2.2 sq. m (24 sq. ft)