



Russetts, Tadworth Street, Tadworth

Guide Price **£235,000**



Russetts Tadworth Street

Tadworth

NO ONWARD CHAIN - Bright one-bedroom ground floor apartment with private garden area, modern kitchen and bathroom. Quiet development near Tadworth village, station, and countryside.

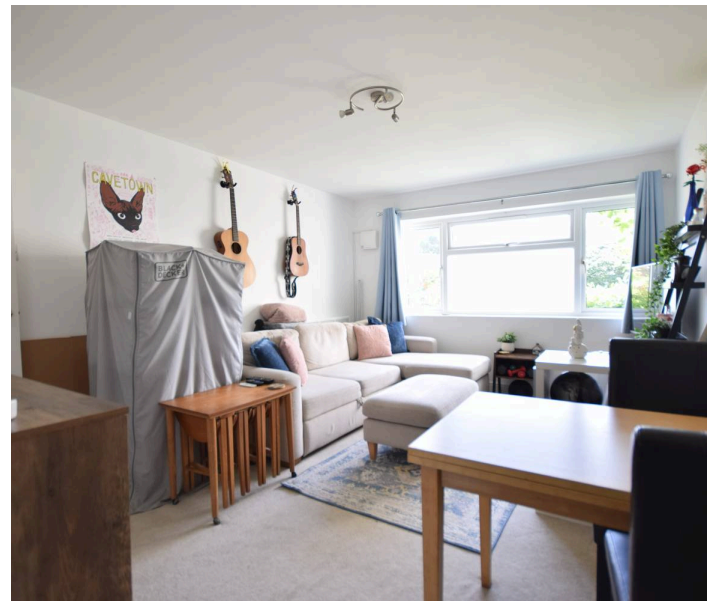
Council Tax band: B

Tenure: Share of Freehold

EPC Energy Efficiency Rating: E

EPC Environmental Impact Rating: E

- No Onward Chain
- Peaceful Cul-De-Sac
- Popular Development
- Spacious Reception
- Modern Kitchen & Bathroom
- Double Bedroom With Fitted Wardrobes
- Well Maintained Communal Gardens
- Easy Reach Of Tadworth Village & Station
- Minutes From Heathland & Picturesque Walks
- Private Front Garden



Well presented throughout, this delightful one-bedroom ground floor apartment offers an excellent opportunity for first-time buyers, those looking to downsize, or investors seeking a home within a popular and peaceful development. Occupying a quiet cul-de-sac position and offered to the market with no onward chain, the property is ready for an easy and stress-free move.

The bright and spacious reception room provides a comfortable setting for both everyday living and entertaining, with large windows allowing an abundance of natural light to fill the space. The modern fitted kitchen offers a good range of units, providing ample storage and worktop space. The generous double bedroom benefits from built-in wardrobes, while the contemporary bathroom is finished with stylish fixtures and fittings.

Externally, the property enjoys the advantage of a private front garden, complemented by beautifully maintained communal gardens that create an attractive and peaceful setting.

Conveniently located, the apartment is within easy reach of Tadworth village, where you'll find a selection of local shops, cafés and everyday amenities. Tadworth railway station is also close by, offering convenient services into London and the surrounding areas. For those who enjoy the outdoors, nearby heathland and picturesque countryside provide excellent opportunities for walking and recreation.

Early viewing is highly recommended to appreciate all that this appealing apartment has to offer. Combining a quiet location with excellent transport links and a wealth of local amenities, this is a fantastic opportunity to acquire a home in one of Tadworth's most sought-after residential areas.

Approximate GROSS Internal Area
House 37.0 sq. m. (398 sq. ft.)



Ground Floor

Floor Area 37.0 sq.m. (398 sq.ft.) approx

Not to scale, for layout reference only. All measurements are approximate.
Produced by As Built Energy Surveys for Cairde Estate Agents





Cairds The Estate Agents

Cairds The Estate Agents, 128-130 High Street - KT19 8BT

01372 743033 • homes@cairds.co.uk • www.cairds.co.uk