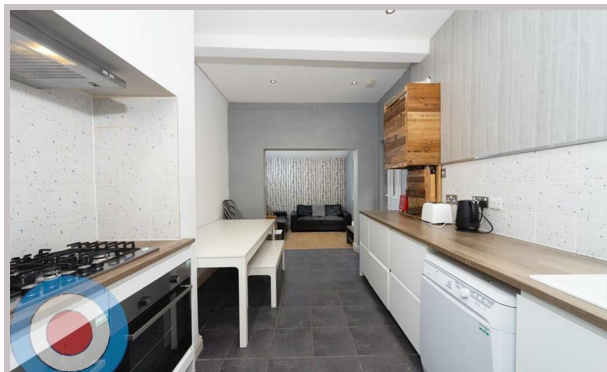




11 Whitby Road
Manchester
M14 6QH



11 Whitby Road

£650 Per month

Modern 5-Bedroom Student House Behind Sainsbury's – Bills Included

£150pppw

£165pppw with bills included

This stylish 5-bedroom mid-terrace house is perfectly positioned in a popular student location just behind Sainsbury's, offering quick access to shops, buses, and everything Fallowfield has to offer.

Inside, you'll find five individually designed double bedrooms and two bathrooms, giving everyone their own space. The open-plan living area combines a modern kitchen, dining space and cosy lounge – ideal for socialising, cooking, and studying together.

Communal cleaning provided throughout the tenancy.

- ALL BILLS INCLUDED
- COMMUNAL CLEANING INCLUDED
- ALL DOUBLE BEDROOMS
- ENERGY EFFICIENT HOUSE C OR ABOVE
- PERFECTLY POSITIONED
- FLEXIBLE DEPOSIT

Local Authority
Manchester

Council Tax Band Exempt

EPC Rating C

Contact

01613992619

hello@welcometomanchesterlettings.com

www.welcometomanchesterlettings.com

