

Glenhurst Avenue, Keighley, BD21 4RJ

Asking Price £179,995

Council Tax Band: B



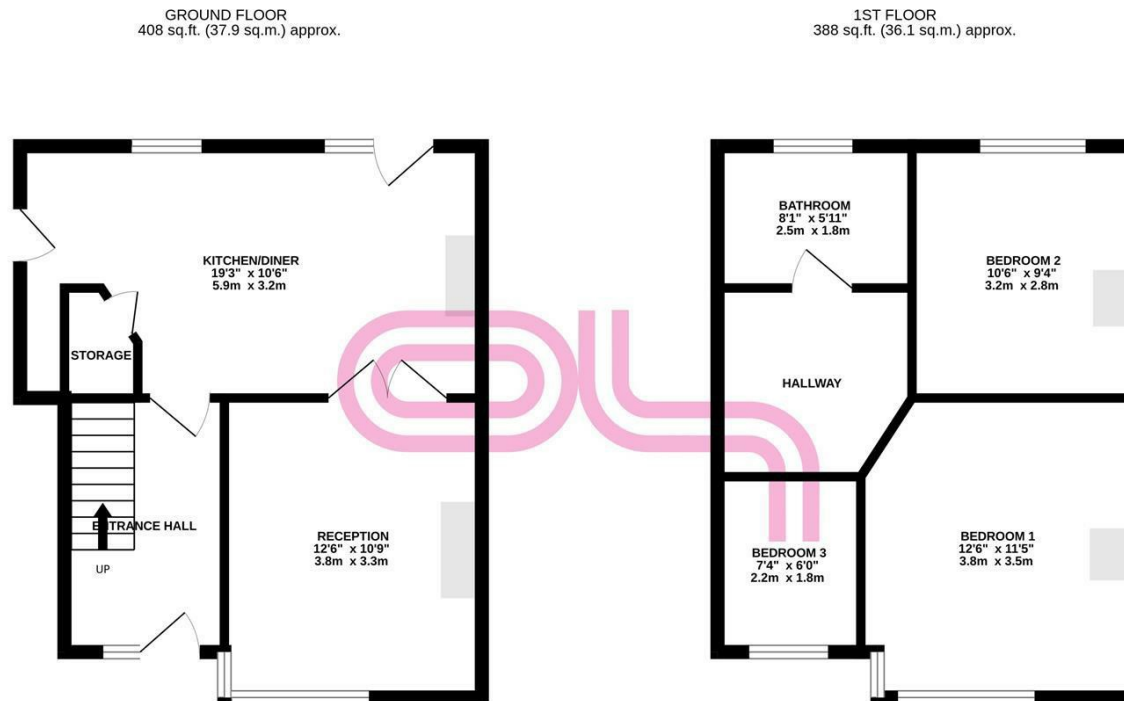
A well presented three-bedroom semi-detached home, ideally positioned on the ever-popular Glenhurst Avenue in Long Lee, this property offers the perfect blend of comfort, space, and practicality for modern family living. Set within a well-regarded residential area, the home enjoys a welcoming atmosphere and convenient access to local amenities, schools, and transport links.

The property has been thoughtfully maintained and is ready to move into, featuring a spacious and light-filled interior throughout. At the heart of the home is a stylish kitchen diner, providing an ideal space for both everyday family life and entertaining guests, while the adjoining living area offering a warm and inviting place to relax.

Externally, the home continues to impress with generous decked gardens, perfect for outdoor dining and enjoying the warmer months. There is also the added benefit of private parking and a garage, offering excellent storage solutions. This is a fantastic opportunity to acquire a well-appointed family home in a highly sought-after location.



Keighley



TOTAL FLOOR AREA: 796 sq.ft. (74.0 sq.m.) approx.

Whilst every attempt has been made to ensure the accuracy of the floorplan contained here, measurements of doors, windows, rooms and any other items are approximate and no responsibility is taken for any error, omission or mis-statement. This plan is for illustrative purposes only and should be used as such by any prospective purchaser. The services, systems and appliances shown have not been tested and no guarantee as to their operability or efficiency can be given.
Made with Metropro ©2026



Energy Efficiency Rating		Current	Potential
Very energy efficient - lower running costs			
(92 plus)	A		
(81-91)	B		
(69-80)	C		
(55-68)	D		
(39-54)	E		
(21-38)	F		
(1-20)	G		
Not energy efficient - higher running costs			
England & Wales		EU Directive 2002/91/EC	