



Holte Drive, Four Oaks,
Sutton Coldfield, B75 6PR

Offers Over £600,000

This spacious detached family home is tucked away in a quiet cul-de-sac and is set over three well-planned floors, offering flexible living space ideal for modern family life.

Lovingly maintained throughout, the property combines generous proportions with practical features and versatile accommodation.

The ground floor boasts a large through lounge and dining area, creating a bright and welcoming space for both relaxing and entertaining. A modern fitted kitchen sits at the heart of the home, complemented by a useful pantry for additional storage. The conservatory overlooks the rear garden and provides an extra reception area filled with natural light. A convenient downstairs WC and integral garage complete the ground floor accommodation.

To the first floor are three spacious double bedrooms, alongside a further room perfectly suited as a home office, nursery or study. A family bathroom serves this level. The second floor offers two additional bedrooms, ideal for growing families, guests or hobby spaces.

Externally, the property benefits from a large driveway to the front providing ample off-road parking, while to the rear is a generous south-facing garden — perfect for enjoying sunshine throughout the day and ideal for outdoor entertaining and family activities.

Viewings: Strictly via appointment through our Four Oaks Residential Sales Department on 0121 308 3737

or via Fouroaks@paulcarrestateagents.co.uk



**PAUL
CARR**
Estate Agents
Sales & Lettings

Porch

Hall

Living/Dining Room 8.46m (27'9") x 3.45m (11'4")

Conservatory

Kitchen 5.21m (17'1") x 3.63m (11'11")

WC

Garage

Landing

Bedroom 1 4.57m (15') x 3.48m (11'5")

Bedroom 2 3.45m (11'4") max x 2.87m (9'5")

Bedroom 3 4.45m (14'7") x 2.72m (8'11") max

Bedroom 4 2.46m (8'1") x 1.91m (6'3")

Bathroom

Landing

Bedroom 5 4.01m (13'2") x 3.45m (11'4") max

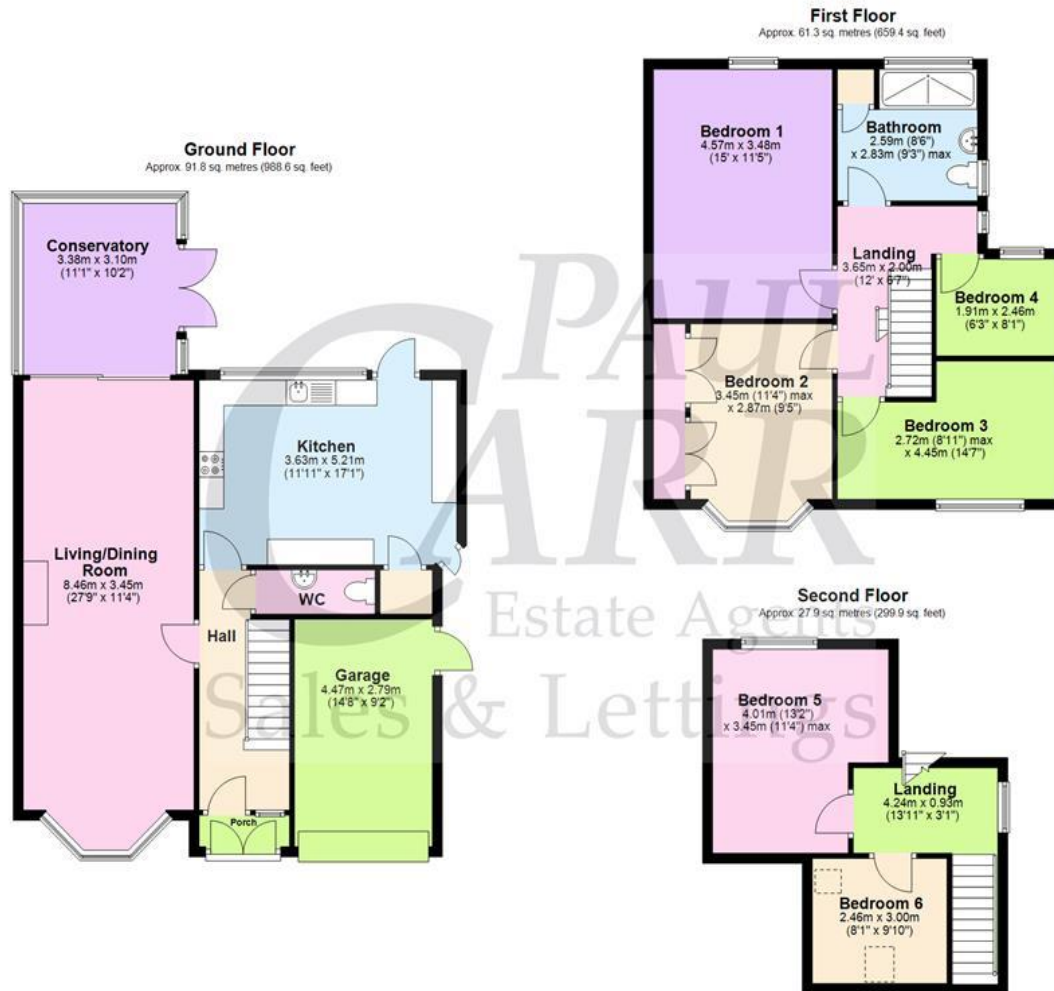
Bedroom 6 3.00m (9'10") x 2.46m (8'1")





Floor Plan

This floor plan is not drawn to scale and is for illustration purposes only

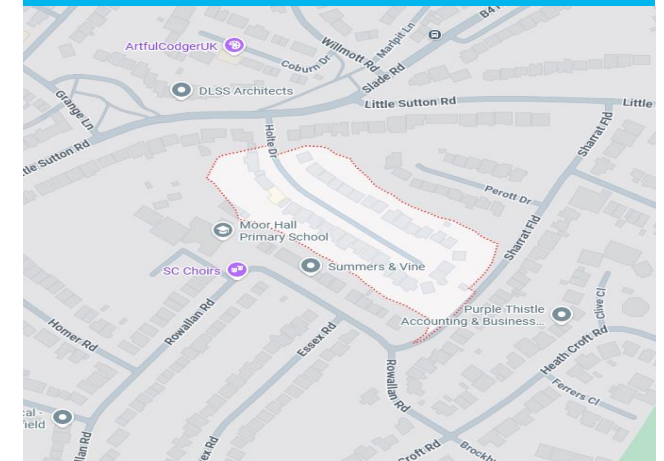


Total area: approx. 181.0 sq. metres (1947.9 sq. feet)

This floorplan is not drawn to scale and is for illustration purposes only
Plan produced using PlanUp.

Energy Performance Rating

Map Location







Agent's Note:

Every care has been taken with the preparation of these Sales Particulars but they are for general guidance only and complete accuracy cannot be guaranteed. If there is any point which is of particular importance, professional verification should be sought. The mention of any fixtures, fittings and/or appliances does not imply they are in full efficient working order as they have not been tested. All dimensions are approximate. Photographs are reproduced for general information and it cannot be inferred that any item shown is included in the sale. These Sales Particulars do not constitute a contract or part of a contract. Came on the market:

Identity Verification Fee - We are required by law to conduct anti-money laundering checks on all those buying a property as part of our due diligence. As agents acting on behalf of the seller, we are required to verify the identity of all purchasers once an offer has been accepted, subject to contract. The initial checks are carried out on our behalf by Lifetime Legal. A non-refundable administration fee of £40 + VAT (£48 including VAT) applies which covers the cost of obtaining relevant data and any manual checks and monitoring which might be required. This fee will need to be paid by you in advance of us issuing a memorandum of sale, directly to Lifetime Legal, and is non-refundable.