



Chaplains Close, Haverhill, CB9 0DT

CHEFFINS

Chaplains Close

Haverhill,
CB9 0DT

A very well presented three bedroom semi detached house located close to schools and amenities. The property benefits from downstairs wc, fitted kitchen, and rear garden. Available 15th June 2026.

- Three Bedrooms
- Conservatory
- Lounge Dining Room
- Family Bathroom
- EPC Rating D
- Council Tax Band C

3 1 2

£1,350 Per Month





GROUND FLOOR

Entrance Hall

Stairs to first floor, storage cupboard, doors to:

Lounge/Dining Room

Window to front, feature fireplace, sliding doors to:

Conservatory

Door to garden

Kitchen

Fitted wall and base units with worktop over, oven, space and plumbing for appliances, window to rear, door to side

WC

Window to front, wash hand basin, wc

FIRST FLOOR

Landing

Storage cupboard, doors to:

Bedroom One

Window, built in double wardrobes

Bedroom Two

Window

Bedroom Three

Window

Bathroom

Window, panelled bath with shower over, wc, wash hand basin

OUTSIDE

Garden

Decking area leading to lawn, with timber storage shed, enclosed by fences with gated access

Holding Deposit


£311.00

Material Information

For more information on this property please refer to the Material Information brochure on our Website

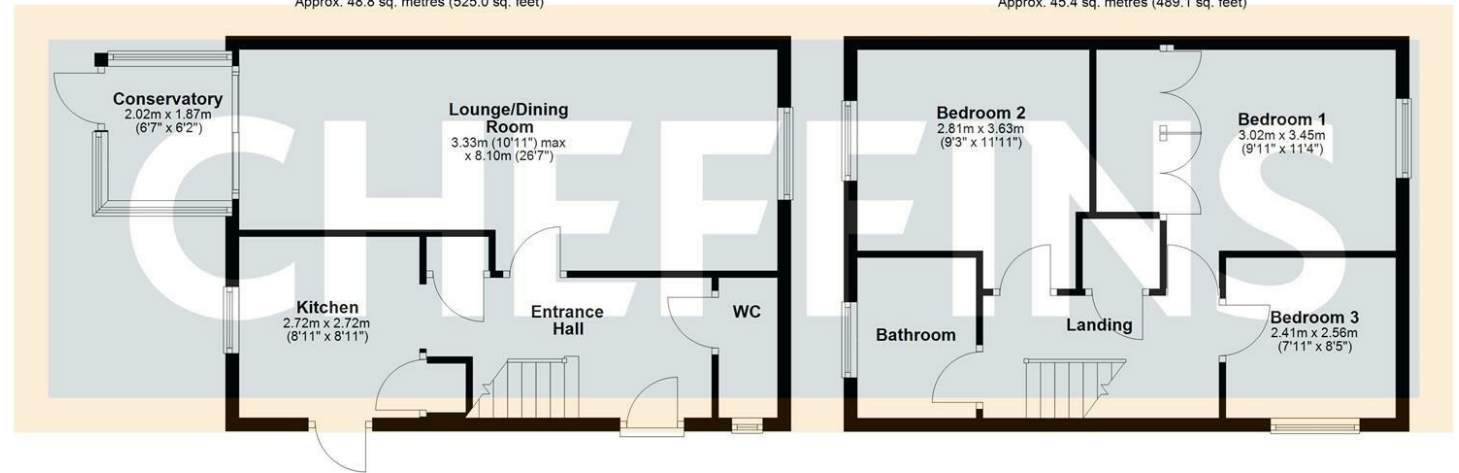


Energy Efficiency Rating

	Current	Potential
<i>Very energy efficient - lower running costs</i>		
(92 plus) A		86
(81-91) B		
(69-80) C		
(55-68) D	68	
(39-54) E		
(21-38) F		
(1-20) G		
<i>Not energy efficient - higher running costs</i>		
England & Wales		EU Directive 2002/91/EC 

Ground Floor
Approx. 48.8 sq. metres (525.0 sq. feet)

First Floor
Approx. 45.4 sq. metres (489.1 sq. feet)



Total area: approx. 94.2 sq. metres (1014.0 sq. feet)

Agents note:

For more information on this property please refer to the Material Information Brochure on our website.

Cavendish House, 27a High Street, Haverhill, Suffolk, CB9 8AD | 01440 707076 | cheffins.co.uk

IMPORTANT: we would like to inform prospective purchasers that these sales particulars have been prepared as a general guide only. A detailed survey has not been carried out, nor the services, appliances and fittings tested. Room sizes should not be relied upon for furnishing purposes and are approximate. If floor plans are included, they are for guidance only and illustration purposes only and may not be to scale. If there are any important matters likely to affect your decision to buy, please contact us before viewing the property.

