



Hill View, Purton – SN5 4GP
Wiltshire

In Excess of **£385,000**

mcfarlane
property.com

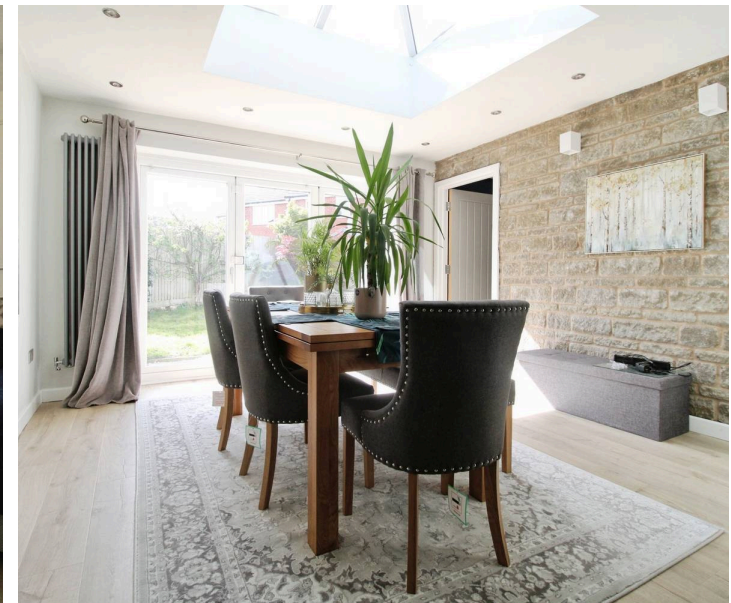
Hill View

Purton, Wiltshire

- Extended and Greatly Improved Home
- Flexible Accommodation over Three Floors
- Ground Floor Extension
- Taylor Wimpey Development (2016)
- Kitchen Breakfast Room + Living Room + Dining Room + STUDY / Bedroom
- Master Bedroom to second Floor with Valuated Ceilings and En-Suite
- Corner Plot with Generous Rear Gardens
- Smaller Cul-De-Sac Location Overlooking Small Green.
- Three / Four Bedrooms + Three/ Four Reception Rooms.

A Taylor Wimpey built home positioned within a smaller cul-de-sac setting on the Ridgeway Farm development in West Swindon.

This EXTENDED and IMPROVED Family Home is presented over Three Floors and offer the flexibility of a Three / Four Bedrooms and Three / Four Reception Rooms.



Hill View

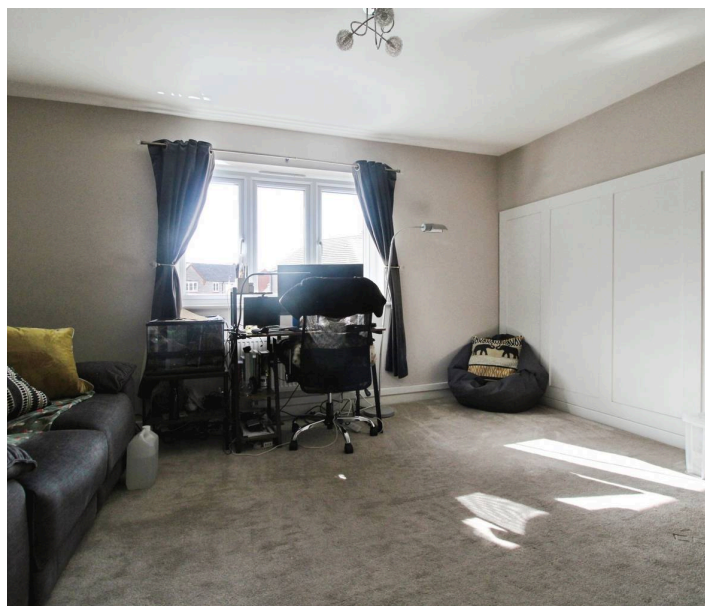
Purton, Wiltshire

Council Tax band: D

Tenure: Freehold

EPC Energy Efficiency Rating: B

EPC Environmental Impact Rating: B

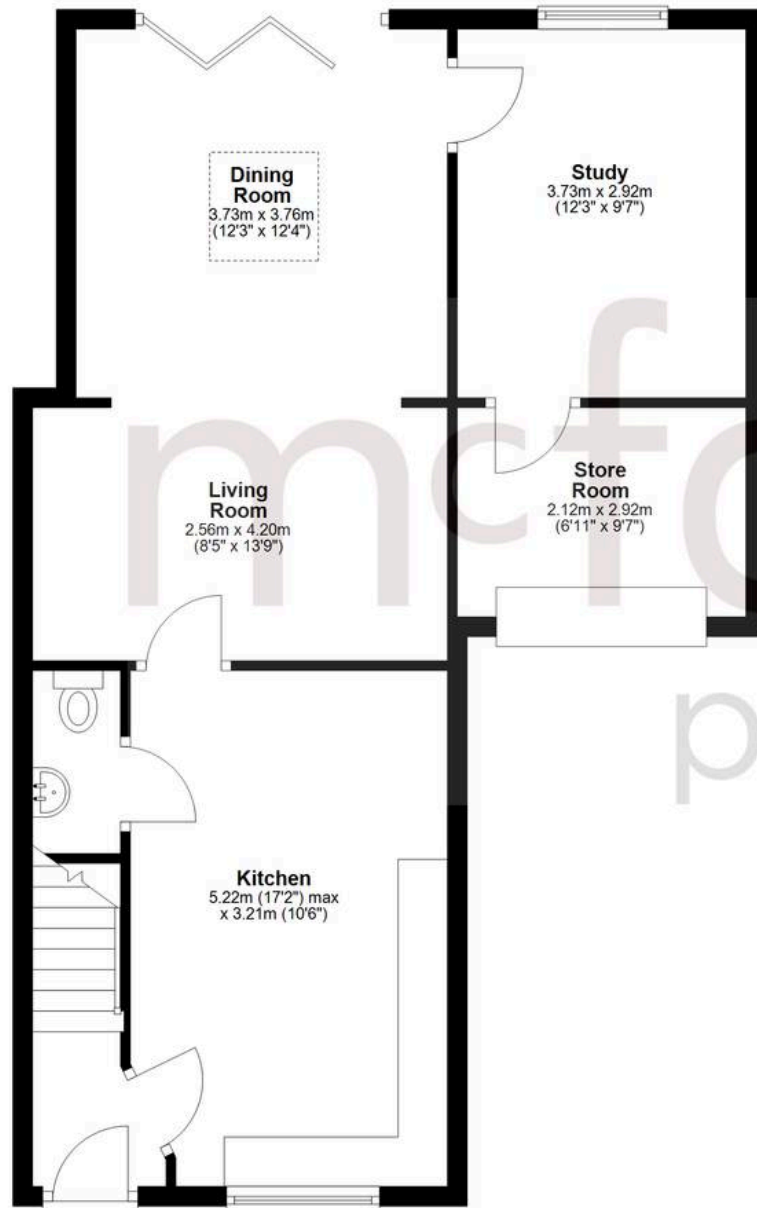


mcfarlane
property.com

Agents Note: Whilst every care has been taken to prepare these sales particulars, they are for guidance purposes only. All measurements are approximate and are for general guidance purposes only and whilst every care has been taken to ensure their accuracy, they should not be relied upon and potential buyers are advised to recheck the measurements.

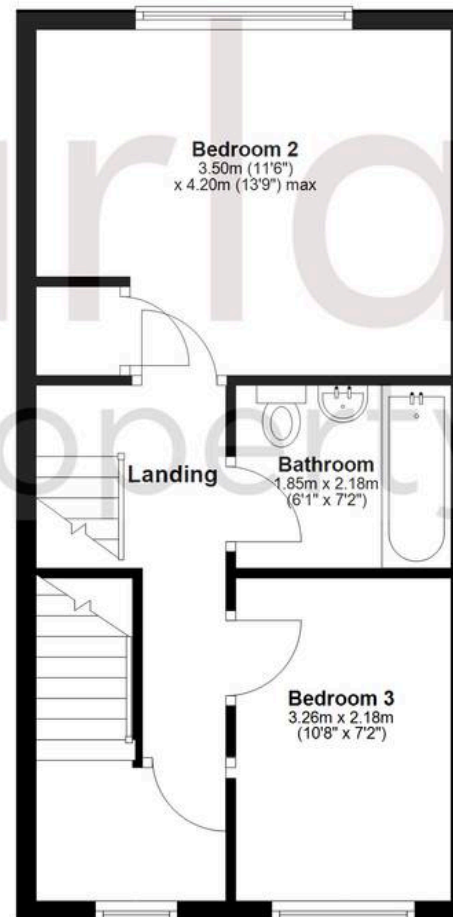
Ground Floor

Approx. 65.5 sq. metres (704.7 sq. feet)



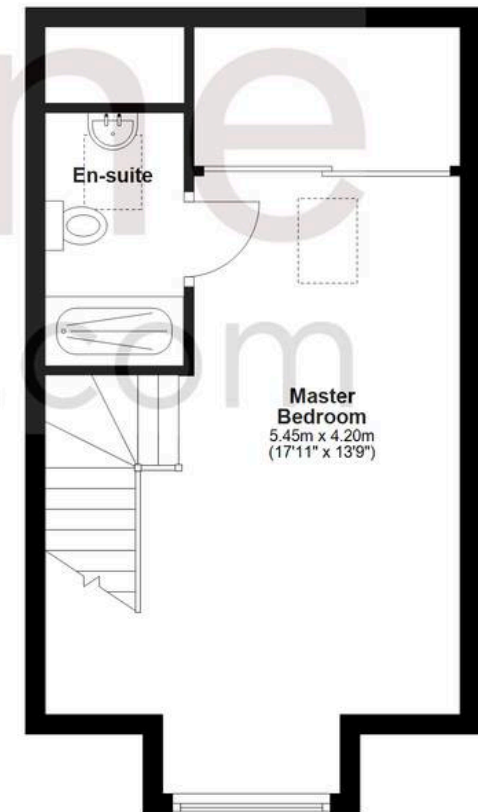
First Floor

Approx. 37.0 sq. metres (398.5 sq. feet)



Second Floor

Approx. 30.7 sq. metres (330.0 sq. feet)



Total area: approx. 133.1 sq. metres (1433.2 sq. feet)