
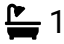





HOMES BY VICTORIA
ESTATE AGENCY

74 Oakenshaw Road,

Offers Over £260,000

 3  1  1



Beautifully Presented Three-Bedroom Semi-Detached Family Home | Corner Plot | Driveway & Detached Garage

Situated in the highly sought-after area of Oakenshaw Road, this beautifully presented three-bedroom semi-detached home offers spacious, light-filled accommodation, exceptional kerb appeal, and a wonderful private garden – making it an ideal purchase for families, first-time buyers, and professionals alike.

[homesbyvictoria.co.uk](https://www.homesbyvictoria.co.uk)

victoria@homesbyvictoria | 07833 136521

FOR M HOMES MIDLANDS LIMITED trading as Homes By Victoria Company Number: 13688840 VAT no: 470190115

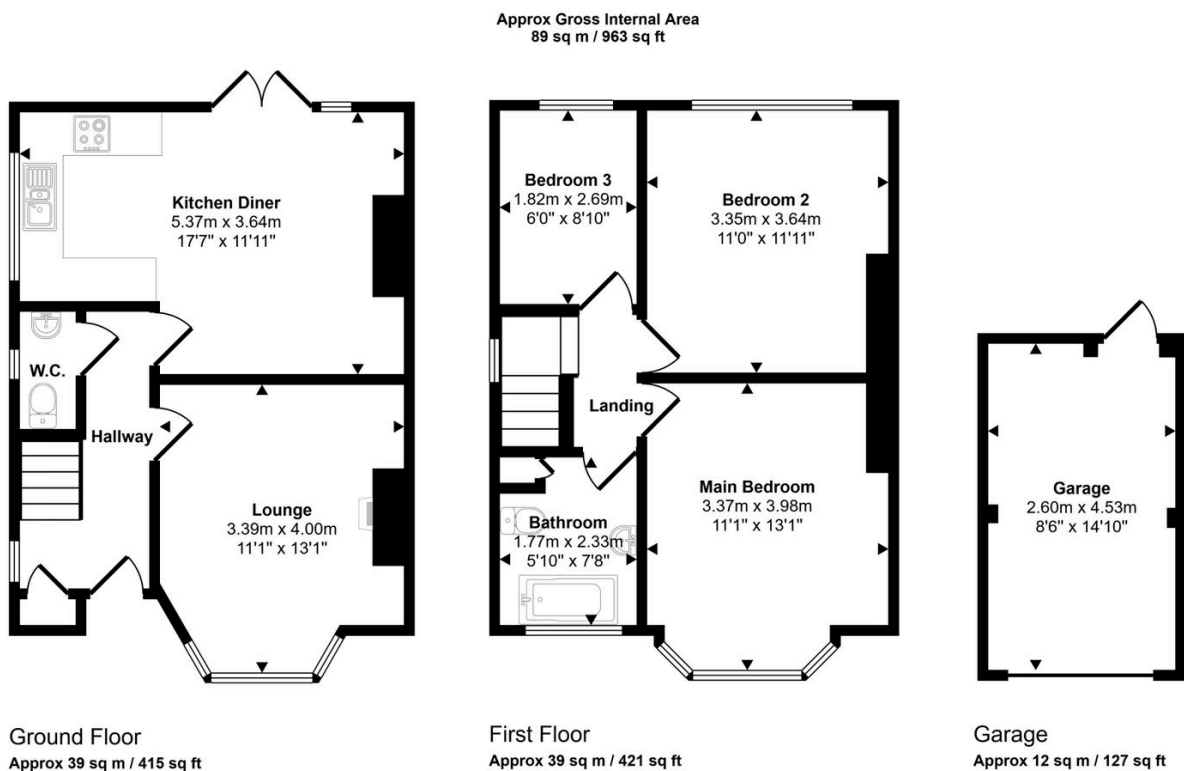


HOMES BY VICTORIA
ESTATE AGENCY



Key Features

- Beautifully presented throughout
- Corner plot position
- Three well-proportioned bedrooms
- Porcelain patio seating area
- Generous driveway providing ample off-road parking
- Highly sought-after residential location
- Modern kitchen diner with patio doors to garden
- Luxury spa-style family bathroom
- Detached garage
- Close to excellent schools, local amenities, and transport links



This floorplan is only for illustrative purposes and is not to scale. Measurements of rooms, doors, windows, and any items are approximate and no responsibility is taken for any error, omission or mis-statement. Icons of items such as bathroom suites are representations only and may not look like the real items. Made with Made Snappy 360.