

Aubrey House, Newby Wiske

Guide Price £750,000

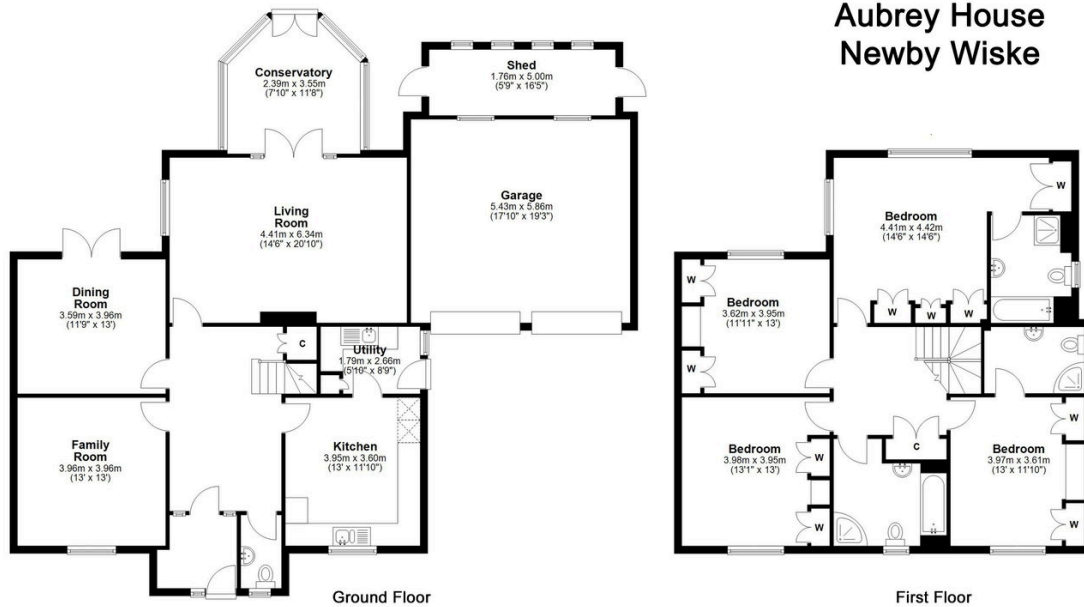
4 3 4



The Yorkshire Property Agency is delighted to introduce this stunning four-bedroom detached home located in the popular North Yorkshire conservation village of Newby Wiske. Boasting a charming high-spec interior and a fabulous west-facing plot and rear garden, Aubrey House offers a wonderful home for all the family.

Key Features

- Four-bedroom detached family home
- Charming high-spec interior
- West-facing rear garden
- Uninterrupted rural views at the rear
- Secure off-street parking
- Conservation village
- Set in approx 1/3 of an acre
- Landscaped gardens
- Double-garage
- Council tax band G



Whilst every attempt has been made to ensure the accuracy of the floorplans contained here, measurements of doors, windows, rooms and any other items are approximate and no responsibility is taken for any error, omission or mis-statement. This plan is not drawn to scale and is for illustrative purposes only & should be used as such by any prospective purchaser. Created especially by Vue3sixty Ltd