



Upper Richmond Road West, SW14 £480,000

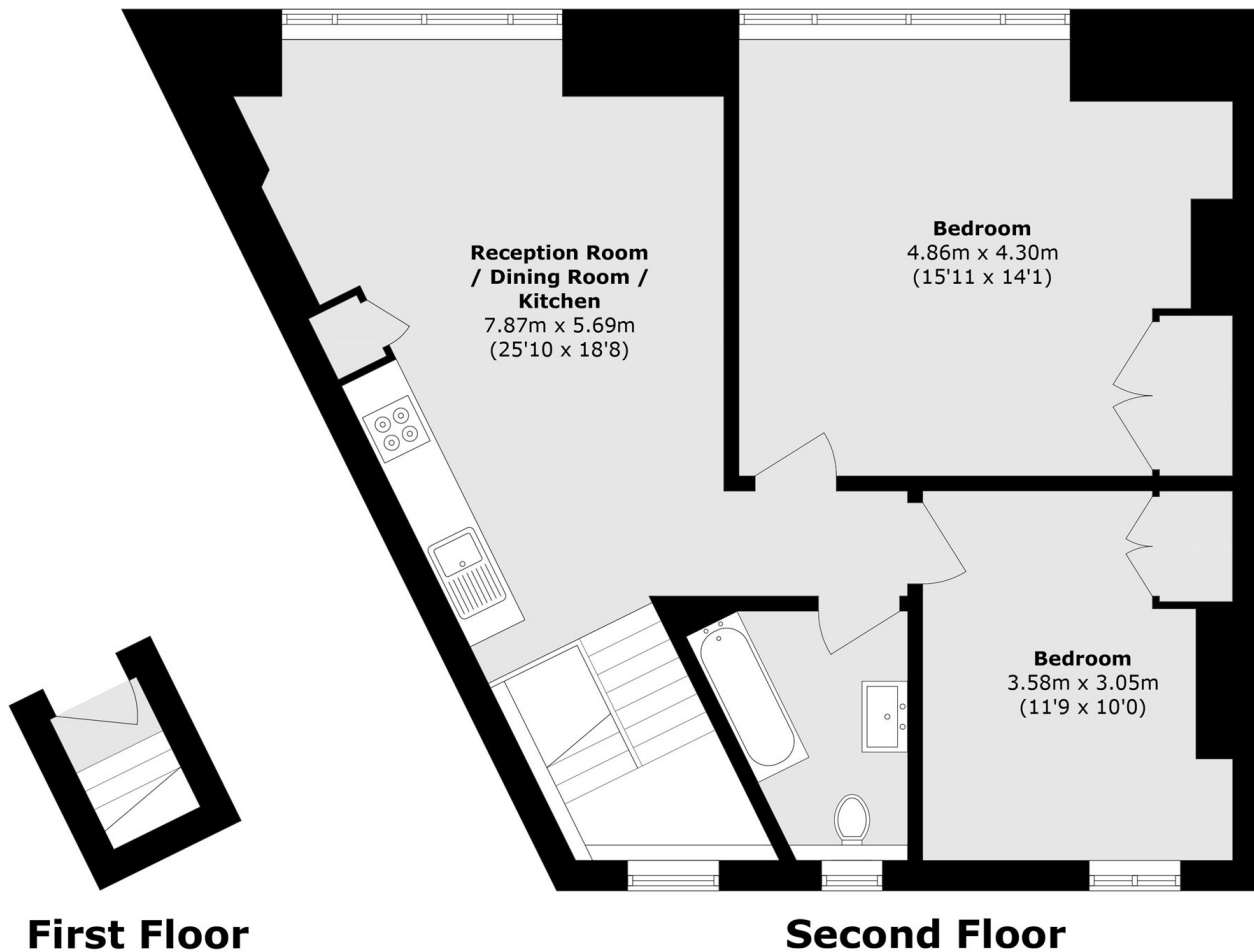
A well-presented top-floor two bed apartment providing approximately 742 sq ft of well-planned accommodation. This flat features two generously sized double bedrooms, providing comfort and flexibility, alongside a bright and inviting open-plan kitchen and reception area, perfect for both relaxing and entertaining. Completing the property is a contemporary bathroom finished to a modern standard.

Located for the extensive shopping and leisure amenities of East Sheen including Waitrose and a number of restaurants and cafes, together with bus routes giving access to Richmond, Putney and Barnes. Mortlake mainline station which provides regular services to London Waterloo is approximately 0.4 miles away.

Features

- Two Bedroom
- Central Location
- Modern Finish
- Top Floor
- Open Plan Kitchen/Reception
- Modern Bathroom

Upper Richmond Road West, London, SW14



Total area (approx.): 69.0 sq. m (742.7 sq. ft)