



## WILLESDEN LANE, NW6

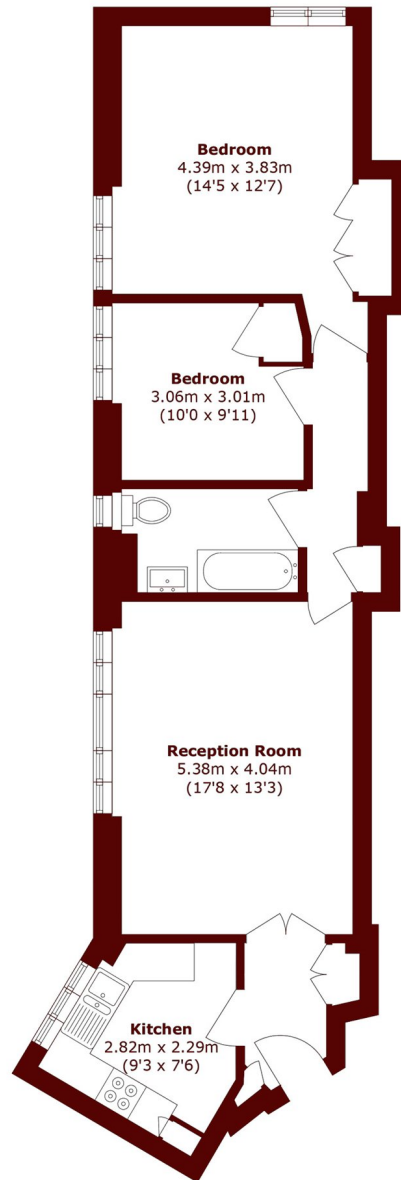
£385,000

Set within a secure Art Deco designed purpose-built block is this spacious two double bedroom flat located on the first floor with lift access. The property has a separate kitchen, built-in storage throughout, communal

Chain free  
Two double bedrooms  
Communal gardens

First floor flat  
Lift access  
Separate kitchen

# STEP INSIDE WILLESDEN LANE



Total area (approx.): 69.4 sq. m (747.0 sq. ft)

**Willesden Green**  
020 8451 0420

Energy Rating: D We aim to make our particulars both accurate and reliable. However, they are not guaranteed; nor do they form part of an offer or contract. If you require clarification on any points then please contact us, especially if you're traveling some distance to view. Please note that appliances and heating systems have not been tested and therefore no warranties can be given as to their good working order

**MARSH &  
PARSONS**