



Woodberry Road , Wickford, SS11 8YE Guide Price £450,000

*** GUIDE PRICE £450,000 - £475,000 ***

Situated in the sought-after residential area of Shotgate, this beautifully presented three-bedroom family home offers spacious and versatile accommodation, perfectly suited to modern family living.

Upon entering, you are greeted by a welcoming entrance hallway leading to a contemporary fitted kitchen, complete with ample worktop space and storage, ideal for both day to day living and entertaining. The kitchen seamlessly opens into the main living area, creating a sociable open-plan layout. Bi-folding doors lead through to a stunning conservatory, featuring floor-to-ceiling glazing, Velux windows, and additional bi-fold doors opening onto the rear garden, allowing natural light to flood the space throughout the day.

The ground floor also benefits from a convenient WC, adding practicality for guests and busy households.

Upstairs, the property offers three generously sized double bedrooms, including a principal bedroom with its own en-suite shower room. A modern three piece family bathroom serves the remaining bedrooms.

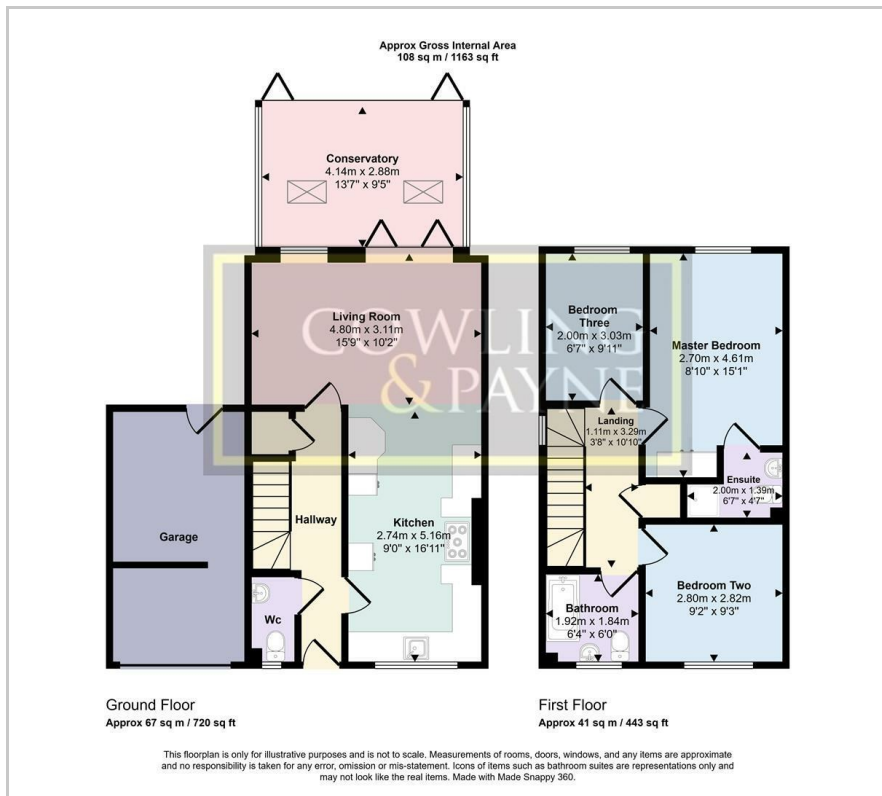
- GUIDE PRICE £450,000 - £475,000
- THREE BEDROOM LINK DETACHED
- ENSUITE TO MASTER
- GROUND FLOOR WC
- GARAGE
- NEARBY LOCAL SCHOOLS
- POPULAR SHOTGATE LOCATION
- OFF STREET PARKING
- COUNCIL TAX BAND - D - BASILDON
- ENERGY PERFORMANCE RATING - D

Viewing

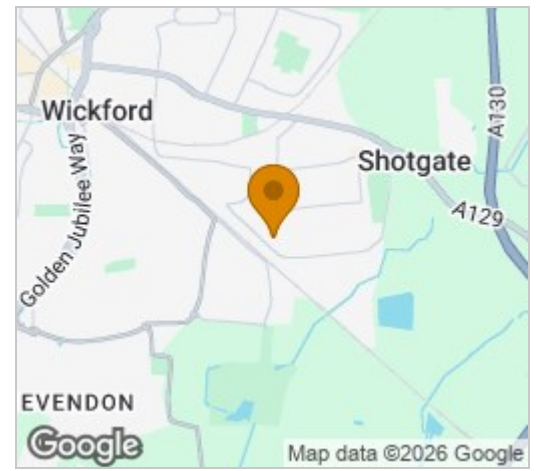
Please contact our Sales Office on 01268 730707 if you wish to arrange a viewing appointment for this property or require further information.

 3
  3
  1
  D

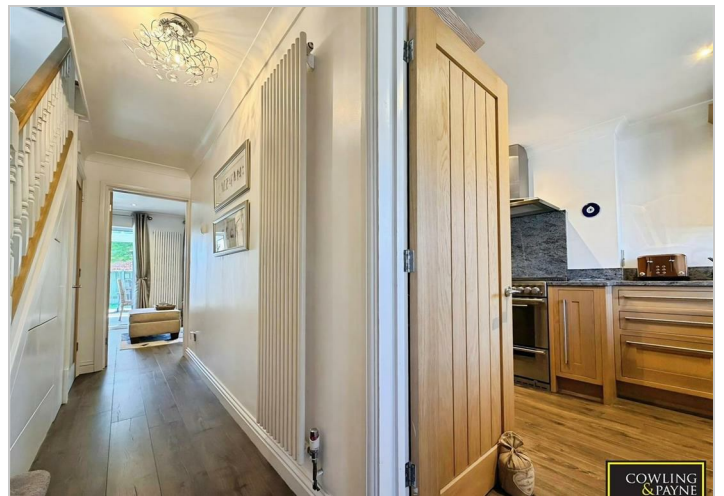
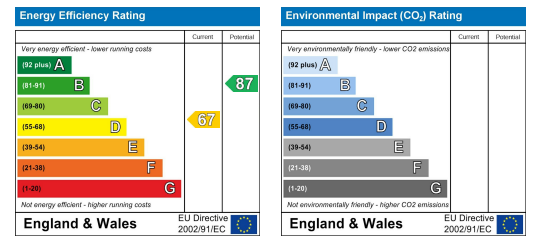
Floor Plan



Area Map



Energy Efficiency Graph



These particulars, whilst believed to be accurate are set out as a general outline only for guidance and do not constitute any part of an offer or contract. Intending purchasers should not rely on them as statements of representation of fact, but must satisfy themselves by inspection or otherwise as to their accuracy. No person in this firm's employment has the authority to make or give any representation or warranty in respect of the property.

2-4 Runwell Road, Wickford, Essex, SS11 7AB

Tel: 01268 730707 Email: info@cowlingandpayne.co.uk <https://www.cowlingandpayne.co.uk>