



WARWICK SQUARE
PIMLICO

JACKSON-STOPS 

WARWICK SQUARE, PIMLICO, SW1V

ASKING PRICE: £525,000

A one bedroom top floor apartment with a lift and private roof terrace is presented to the market in Pimlico, SW1.

This well configured flat is presented in good decorative order and benefits from excellent natural light throughout, as well as enviable roof top views across prime central London. It would suit all those looking for a one bedroom pied-a-terre, a first time buy or buy to let investment.

Conveniently located only 0.3 miles from Victoria mainline station (with the benefit of both Over and Underground services, as well as the Gatwick Express). It is well positioned for both local national and international travel; Battersea Park with its 200 acres of is also only 0.9 miles away.

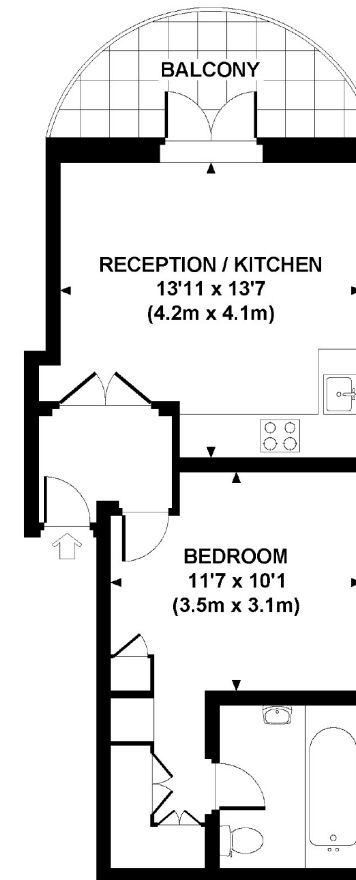
KEY FEATURES

- Share of Freehold
- Lift
- Terrace
- Ground Rent: £250 pa
- Service Charge: c. £8,548 pa
- Inc Reserves

Energy Rating: D. We aim to make our particulars both accurate and reliable. However they are not guaranteed; nor do they form part of an offer or contract. If you require clarification on any points then please contact us, especially if you are travelling some distance to view. Please note that appliances and heating systems have not been tested and therefore no warranties can be given as to their good working order.

WARWICK SQUARE, SW1X

Approx. gross internal area
422 Sq Ft. / 39.2 Sq M.



FOURTH FLOOR

dsg All measurements are approximate and for illustrative purposes only as defined by the RICS Code of Measuring Practice © 2013
Drawing Jones Design www.drawingjones.com 020 7519 9933

ASKING PRICE: £525,000

PIMLICO

020 7828 4050

pimlicosales@jackson-stops.com

jackson-stops.co.uk

JACKSON-STOPS